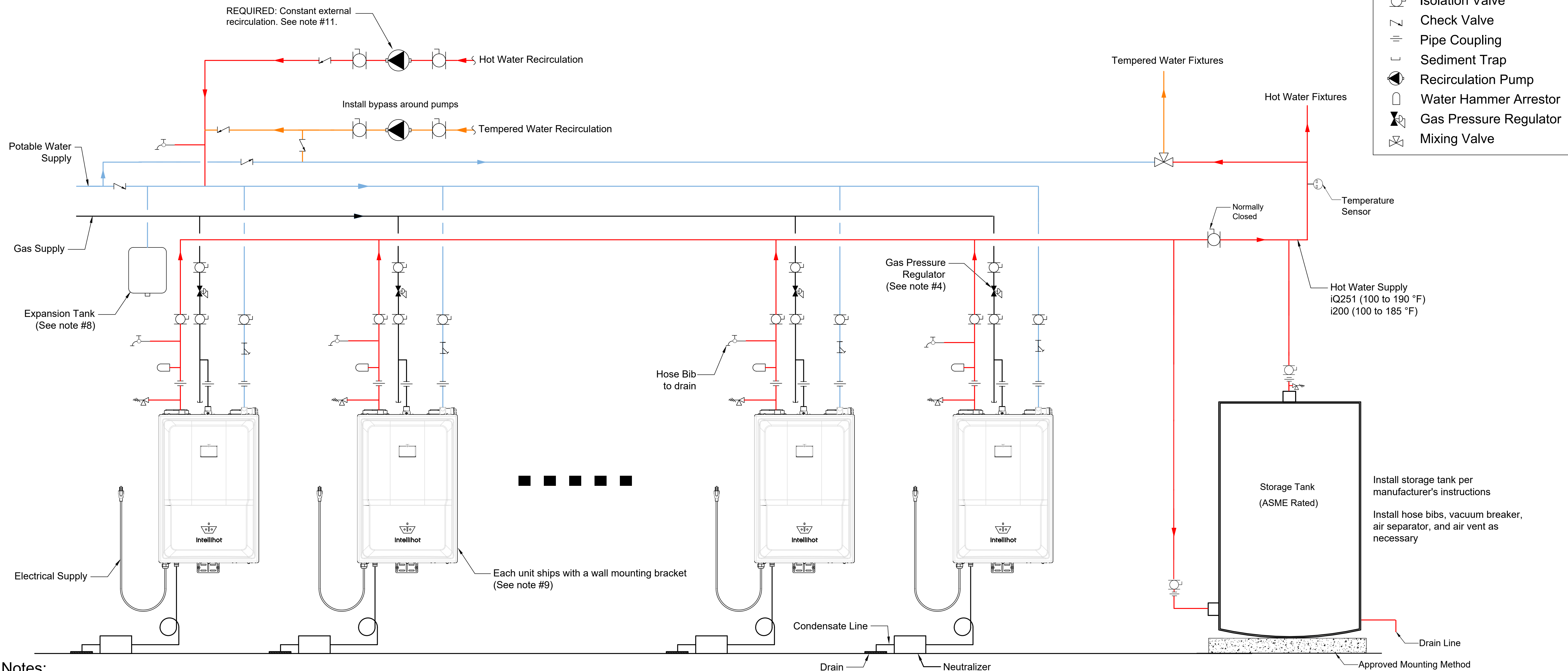


Wall Mount (4+ Units) and (1) storage tank

Units are not to scale



Notes:

1. This schematic is a suggested piping diagram. Any additional requirements from local codes and ordinances shall supersede this diagram.
2. Intellihot models are Category IV potable tankless water heaters not to be installed in closed loops. Refer to manuals for certifications.
3. For water piping, gas supply, and venting requirements, please refer to the operation and installation manual.
4. Gas pressure regulator required to be installed if incoming gas pressure > 14" W.C.
5. Water hammer arrestor (ships with wall unit) to be installed within 20 ft. of the unit on the hot water supply.
6. Y-strainer to be installed near the inlet of each unit.
7. Temperature and pressure relief valve (shipped with the unit) to be installed on the hot water supply.
8. Expansion tank to be sized based on the gallons of water in the plumbing system including the recirculation piping.
9. Refer to the manuals for operating weight of the wall mounts and installation instructions.
10. Venting materials for the units must meet the manual requirements.

Note #11: Constant external recirculation required. MIN GPM flow rate, with MIN 12 ft. of head, required for wall units (refer to manual for MIN GPM). The 12 ft. of head must be added to the total pressure drop (friction losses) in the system (piping, fittings, equipment, etc.).

This document/drawing contains confidential and proprietary information and is the property of Intellihot Green Technologies, Inc. This document/drawing was prepared for the sole purpose of soliciting quotes, producing samples, or propose services. It is submitted in confidence on the condition that you and your representatives have, but receiving it, agreed not to reproduce or copy it, in whole or in part, or to furnish such information to others, or to make an other use of it except for the purposes stated above.

DRAWING NUMBER:

JOB NAME:

