



Intellihot

**THANK
YOU**

FOR YOUR ORDER

NOTICE: Seller's warranty shall be void and of no effect if:

1. Licensed contractor is not used to install products.
2. Buyer uses the products in a manner not intended by Seller or in a manner not disclosed by Buyer; or
3. The breach resulted from the actions or omissions by another party or misuse of the products. For further questions or assistance feel free to reach out to our Customer Support team at: 877-835-1705

Upper Pump Cartridge Replacement

Applicable Units: iQ2001 & iQ3001

Tools Required

Allen Wrench's: 4 mm & 5mm



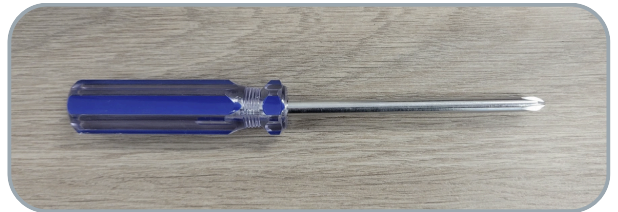
Channel Locks



Socket's and Ratchet: 7, 8, 10, 15, & 16 mm



Phillips Head Screwdriver



T15 Torx head Screwdriver



18 mm Hex Wrench



Flat Head Screwdriver



Dry Rags/Towels

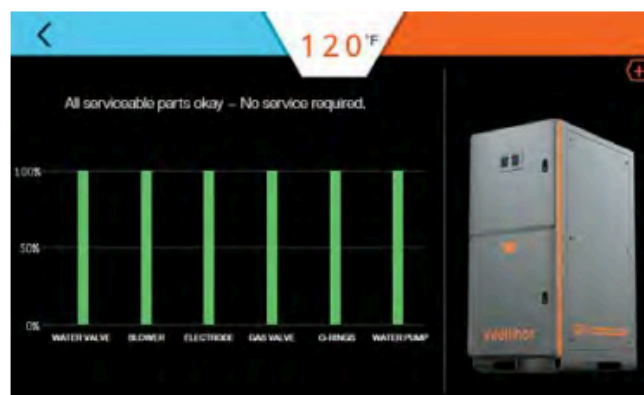
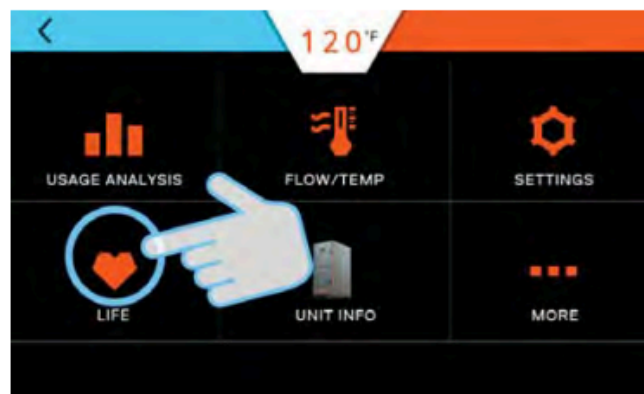


Upper Pump Cartridge Replacement

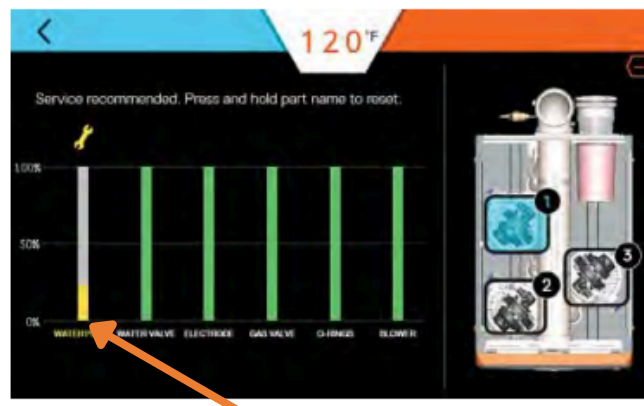
Applicable Units: iQ2001 & iQ3001

Other Notes

After replacing the pump, reset the pump part life on the display by tapping the top 3 lines, then go to "Life" and press and hold on "pump" and put in code: 6452



Press the (+) button to show the details of the various heat engines.



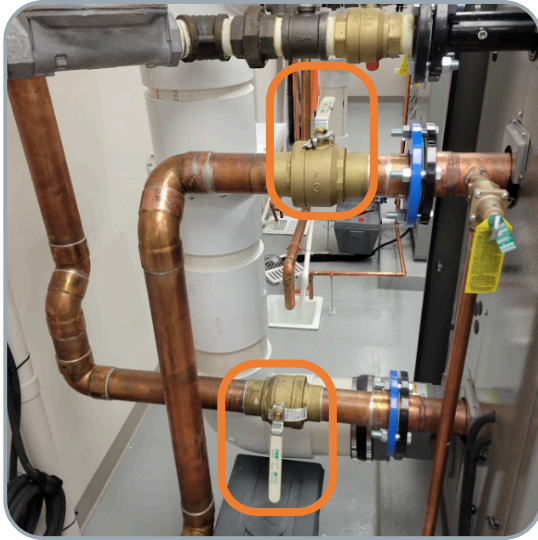
Upper Pump Cartridge Replacement

Applicable Units: iQ2001 & iQ3001

Steps to Drain Unit

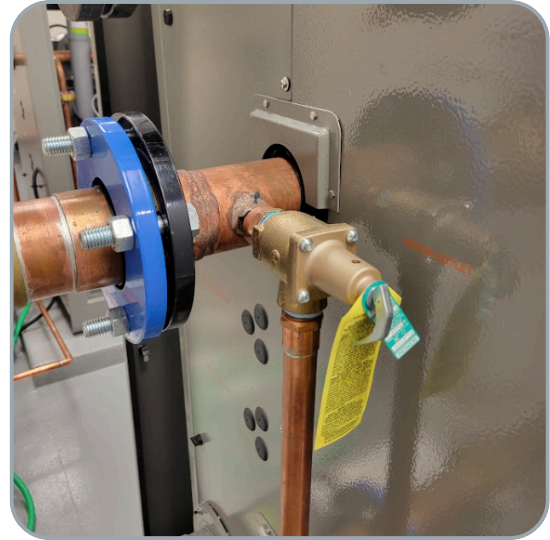
1

Isolate the unit by closing off the inlet and outlet isolation valves.



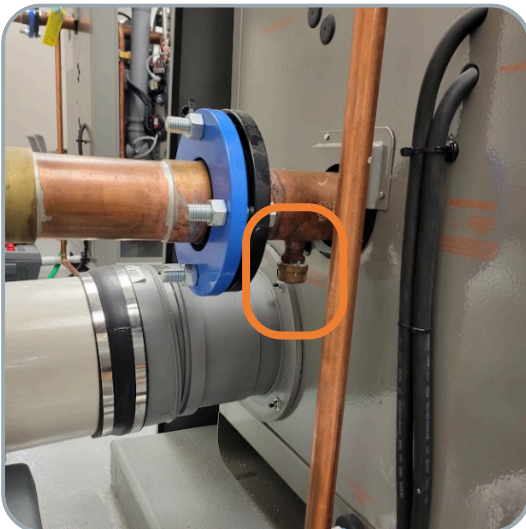
2

Using the T&P Relief valve, release any excess pressure inside the unit.



3

Using channel locks unscrew the 3/4" cap on the inlet side of the unit, and attach the garden hose to the open port, and let the water drain out.



Upper Pump Cartridge Replacement

Applicable Units: iQ2001 & iQ3001

Steps to Remove Back Door Panel

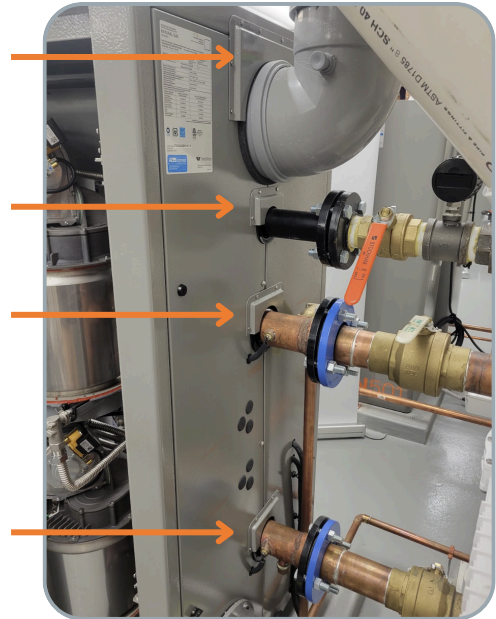
1

Using the 4 mm Allen wrench loosen the top right black latch on the back right door. Using your hand loosen the bottom right black latch.



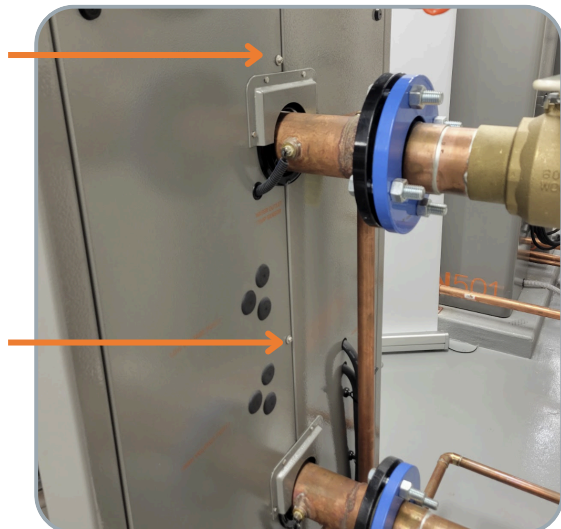
2

Using the 7 mm socket and ratchet remove all of the bolts that hold the 4 metal brackets to the back two doors of the unit.



3

Using a Phillips head screwdriver, remove the two Phillips head screws from the center of the back doors.



4

Using a 10 mm socket and ratchet, loosen the 4 bolts that hold the intake elbow on the back of the unit.



Upper Pump Cartridge Replacement

Applicable Units: iQ2001 & iQ3001

Steps to Remove Back Door Panel

5

Once all of the bolts on the back right door panel are removed and the bolts on the intake elbow are loosened, you will need to slide the door out of place. To do this you will need to grab the top right corner of the door and pull up and out.



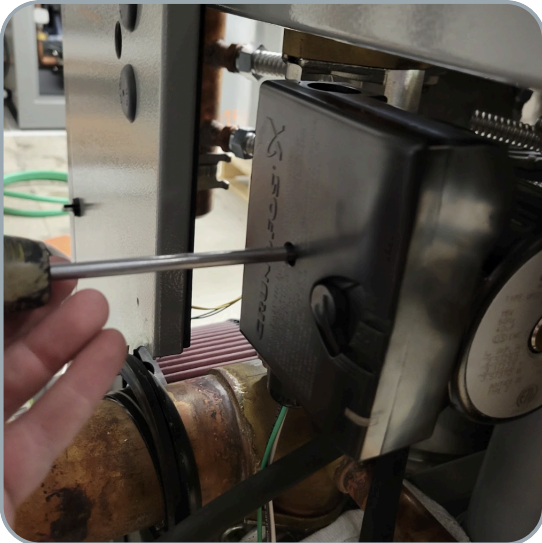
Upper Pump Cartridge Replacement

Applicable Units: iQ2001 & iQ3001

Steps to Remove Old Pump Cartridge

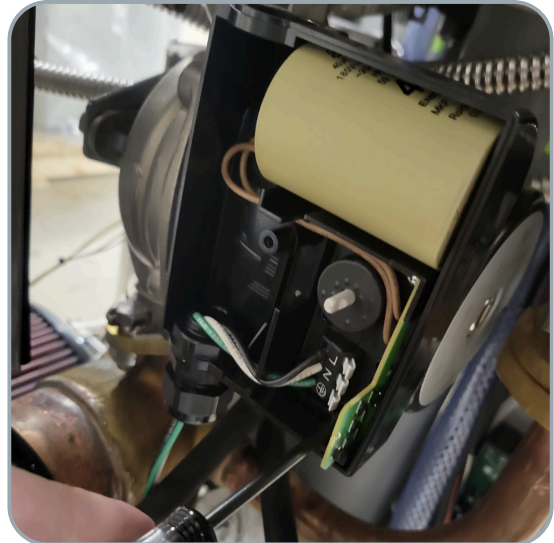
1

Using a Philips head screwdriver remove the screw in the center of the pump's electrical box and remove the cover.



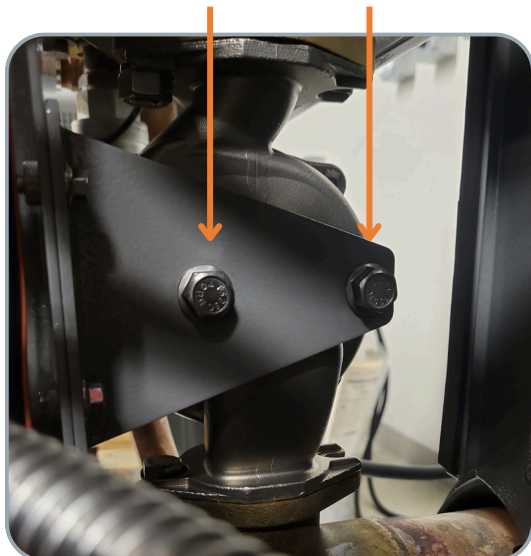
2

Using a T15 Torx head screwdriver remove the two screws that hold the electrical box on the pump and remove the electrical box.



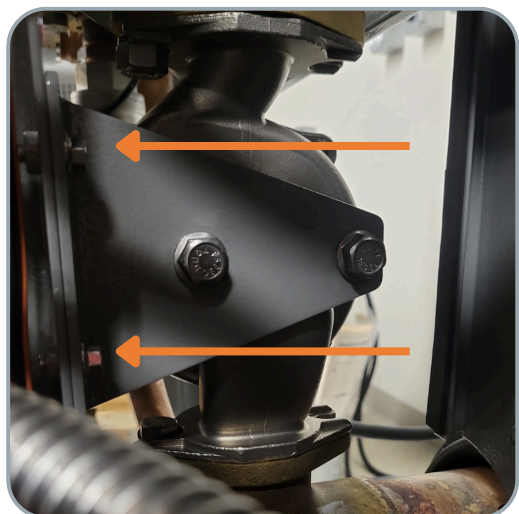
3

Using a 15 mm socket and ratchet remove the two bolts that hold the pump onto the bracket behind it.



4

Using an 8 mm socket and ratchet remove the two bolts that hold the bracket onto the frame of the unit.



Upper Pump Cartridge Replacement

Applicable Units: iQ2001 & iQ3001

Steps to Remove Old Pump Cartridge

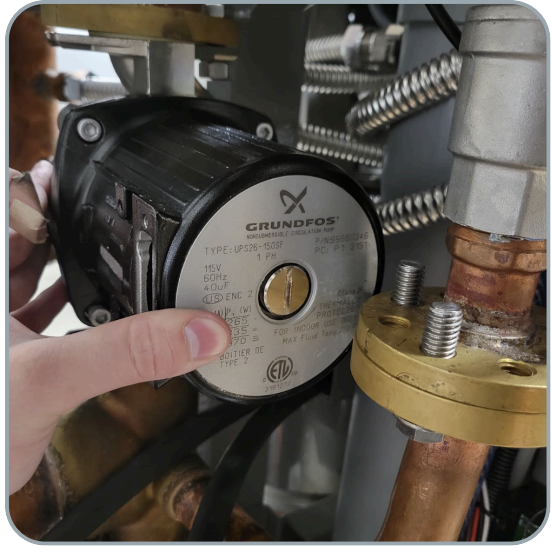
5

Using a 16 mm socket and ratchet and a 18 mm hex wrench, remove the bolts on the volute, start with the top left bolt. Use 16mm socket and ratchet to loosen the bolt while holding the bottom nut with a 18mm hex wrench as shown.



6

Rotate the pump past the bypass to make clearance for removing the pump cartridge from the volute.



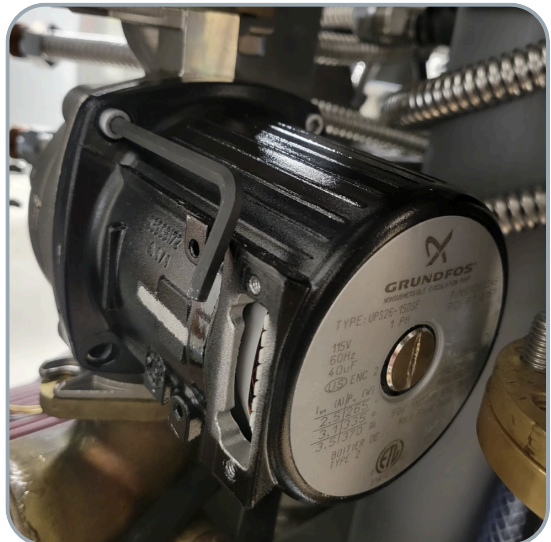
7

Cover lower pump with towel to protect it from any water that may be left in the upper pump cartridge.



8

Using the 5mm Allen wrench, remove all 4 bolts that hold the pump cartridge on the silver volute. Pull out the old pump cartridge.



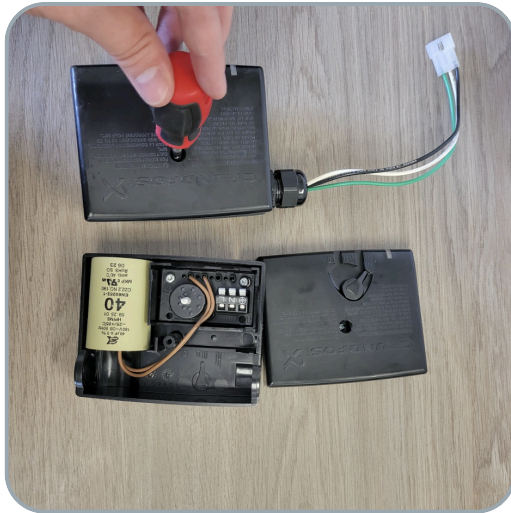
Upper Pump Cartridge Replacement

Applicable Units: iQ2001 & iQ3001

Steps to Prepare New Electrical Box

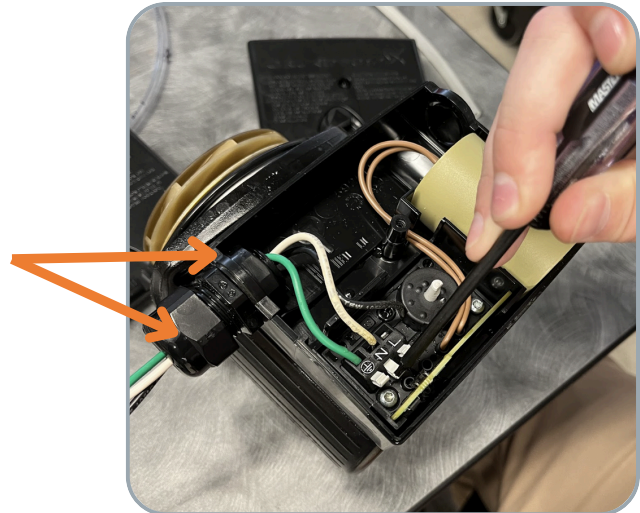
1

Using the Phillips head screwdriver remove the top of both electrical boxes.



2

Remove the 3 wires that are plugged into the old electrical box, and unscrew the black plastic nuts that hold the wires in.



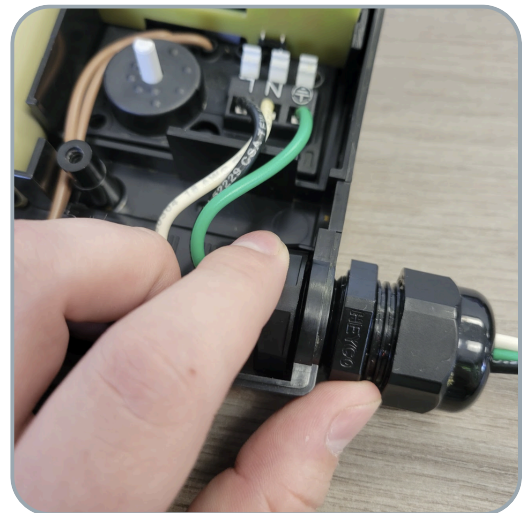
3

Feed the 3 wires through the black plastic nut on the inside of the new electrical box and install the 3 wires into the new electrical box.



4

Using your hands tighten up the black plastic bolt on the inside and outside of the electrical box.



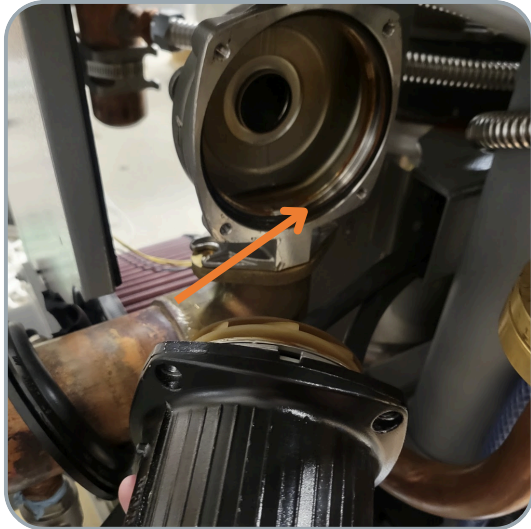
Upper Pump Cartridge Replacement

Applicable Units: iQ2001 & iQ3001

Steps to Install New Pump Cartridge

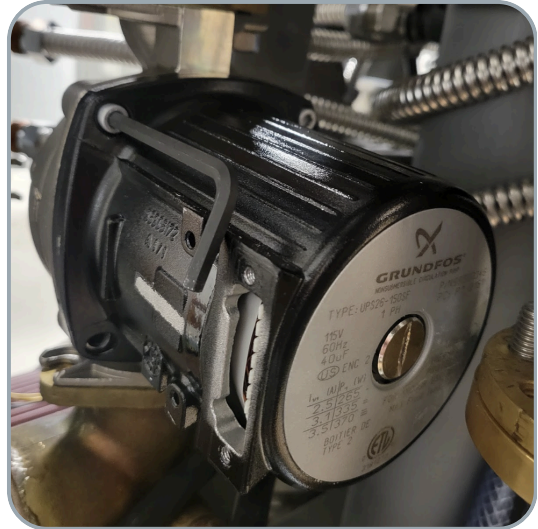
1

Replace the old O-Ring on the inside the volute with the new supplied O-Ring



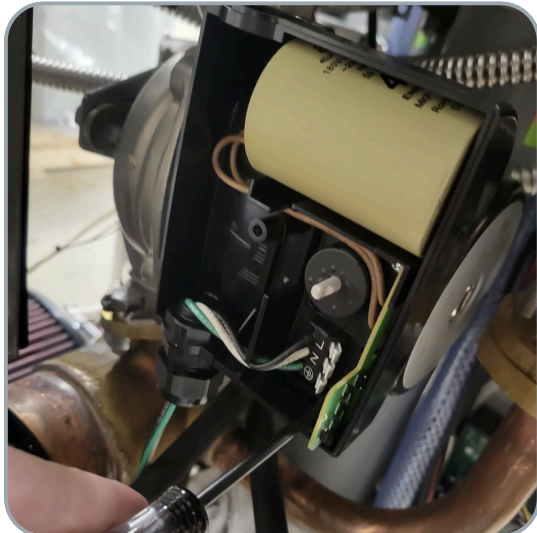
2

Using the 5 mm Allen wrench screw in the 4 bolts that hold the pump cartridge on the silver volute. Ensure that the connection for the electrical box is facing up.



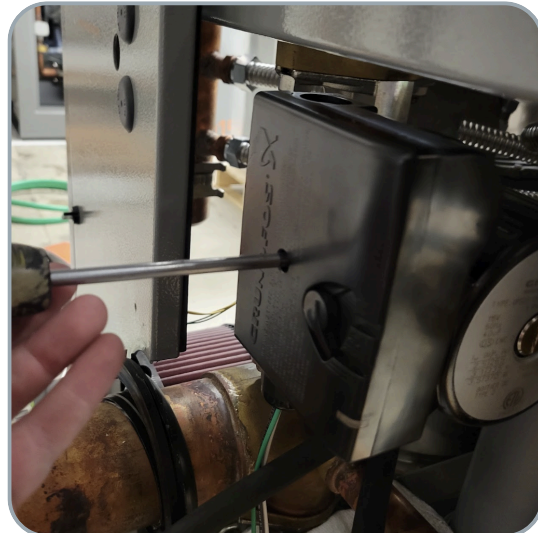
3

Attach the bottom part of the electrical box to the back side of the pump. Using the T15 Torx screwdriver, screw in the two screws that hold the bottom of the electrical box to the top of the pump.



4

Using a Phillips head screwdriver, screw on the top cover of the electrical box onto the rest of the pump.



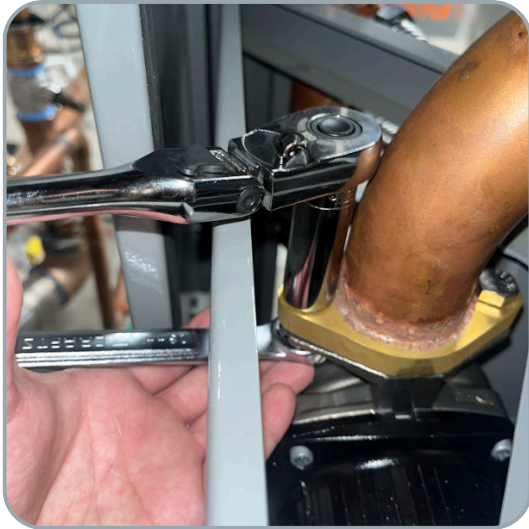
Upper Pump Cartridge Replacement

Applicable Units: iQ2001 & iQ3001

Steps to Install New Pump

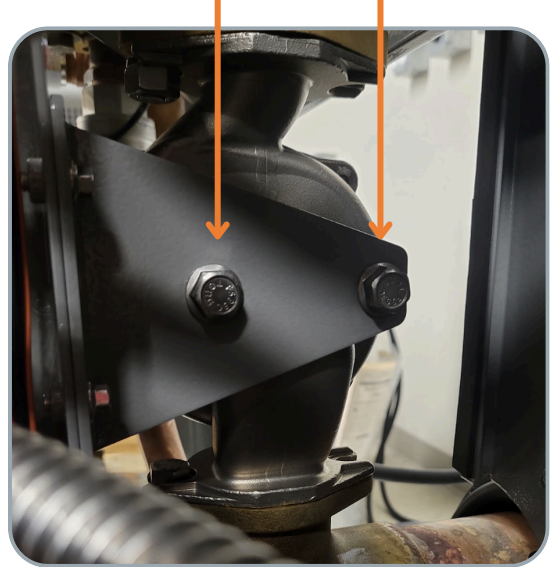
5

Using a 16 mm socket and ratchet, and a 18 mm hex wrench screw the bolts back into the volute.



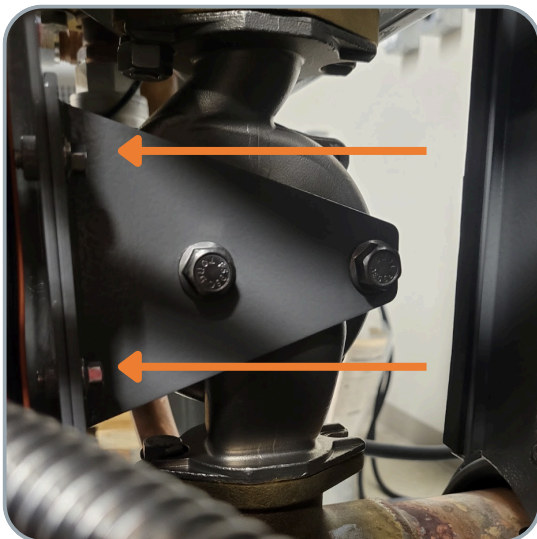
6

Using a 15 mm socket and ratchet screw in the two bolts that hold the pump onto the bracket behind it.



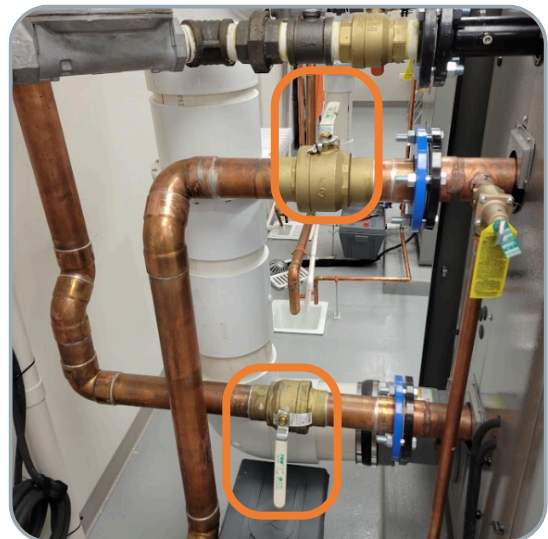
7

Using an 8 mm socket and ratchet screw the two bolts that hold the bracket onto the frame of the unit.



8

Slowly open up the inlet and then the outlet to let the unit fill up with water and pressurize.



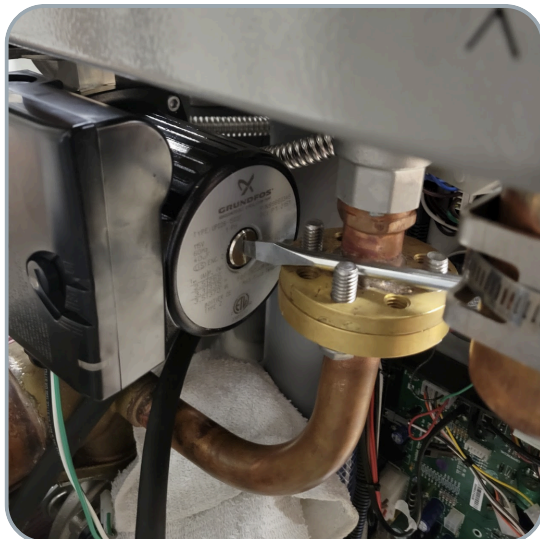
Upper Pump Cartridge Replacement

Applicable Units: iQ2001 & iQ3001

Steps to Install New Pump

9

Using a flat head screwdriver loosen the bleed screw on the pump about 3 turns, and let any air bleed out of the pump.



6

Turn the power back on and ensure that there are no leaks coming from the pump.



7

Slide the back right door panel back into place and tighten all of the screws that were removed when removing the back door.

