



Intellihot

**THANK  
YOU**

FOR YOUR ORDER

***NOTICE: Seller's warranty shall be void and of no effect if:***

1. Licensed contractor is not used to install products.
2. Buyer uses the products in a manner not intended by Seller or in a manner not disclosed by Buyer; or
3. The breach resulted from the actions or omissions by another party or misuse of the products. For further questions or assistance feel free to reach out to our Customer Support team at: 877-835-1705

# Floor Mount Pump Cartridge Replacement

## Tools Required

5 mm Allen Wrench



Stubby Phillips Head Screwdriver



T15 Torx head Screwdriver



Flat Head Screwdriver

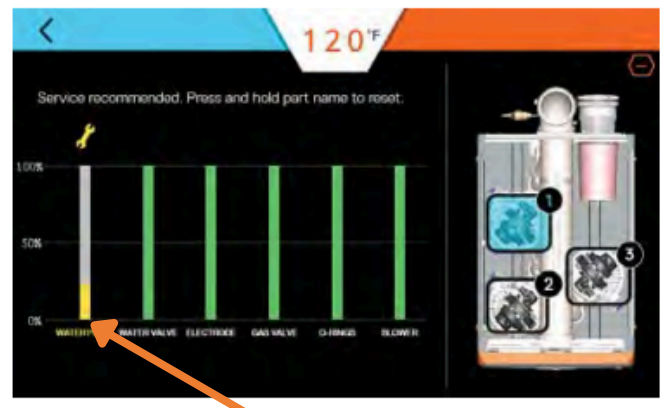


## Other Notes

After replacing the pump, reset the pump part life on the display by tapping the top 3 lines, then go to "Life" and press and hold on "pump" and put in code: 6452



Press the (+) button to show the details of the various heat engines.



# Floor Mount Pump Cartridge Replacement

## Steps to Drain Unit

1

Turn the unit off at both rocker switches, turn the unit back on for about 8 to 10 seconds then turn the unit back off at the rocker switches and power off the breaker feeding the unit.



(This forces open all water valves that can open. This will allow the unit to drain completely.)

2

Isolate the unit by closing off the inlet and outlet isolation valves.



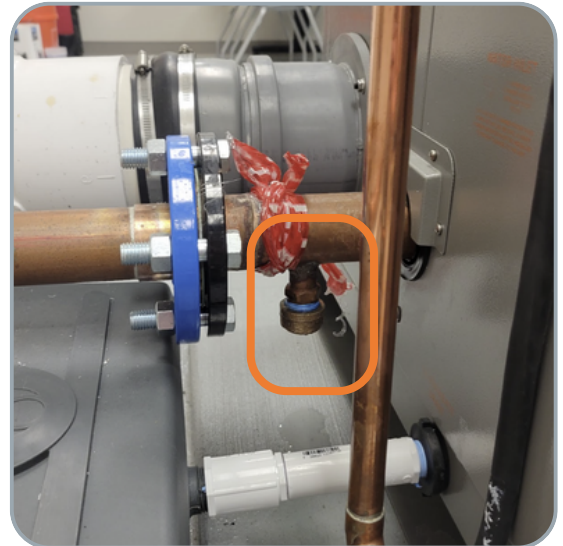
3

Using the T&P Relief valve, release any excess pressure inside the unit.



4

Unscrew the 3/4" cap on the inlet side of the unit, and attach the garden hose to the open port, and let the water drain out.



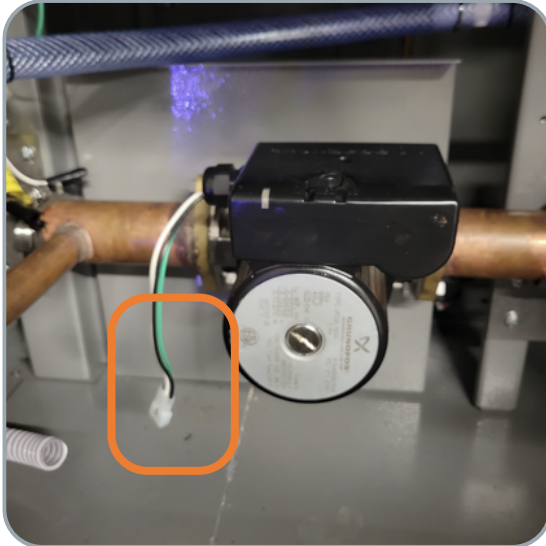


# Floor Mount Pump Cartridge Replacement

## Steps to Remove Old Electrical Box

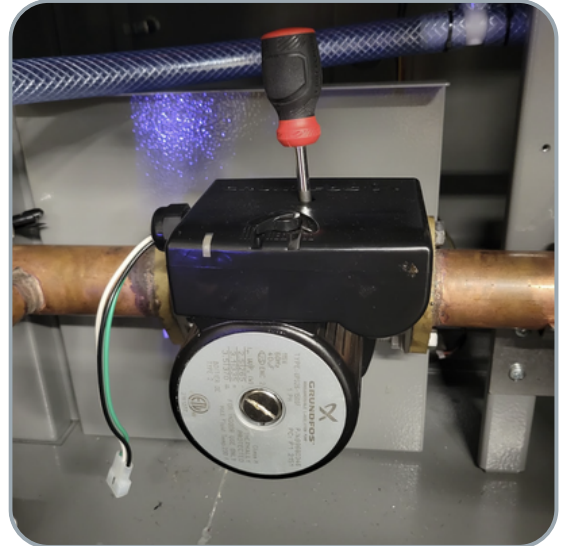
1

Unplug the 3 wire harness at the molex connector



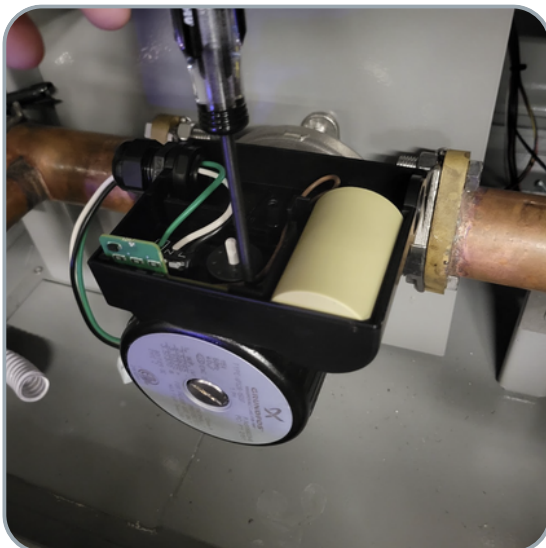
2

Using a Phillips head screwdriver remove the top of the electrical box from the pump.



3

Using the T15 Torx head screwdriver remove the 2 screws holding the electrical box to the pump cartridge.



4

Lift the electrical box off of the pump and set it to the side for later.





# Floor Mount Pump Cartridge Replacement

## Steps to Remove Old Pump Cartridge

1

Using the 5 mm Allen wrench unscrew the 4 bolts that holds the pump cartridge to the silver volute.



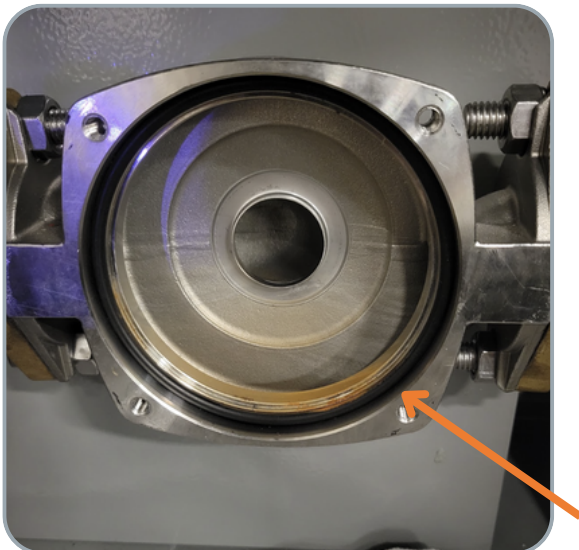
2

Remove the pump cartridge from the silver volute, some water may come out of the pump when removed. Be prepared with some rags as water may drip out.



3

Remove the old O-Ring from the inside of the silver volute.

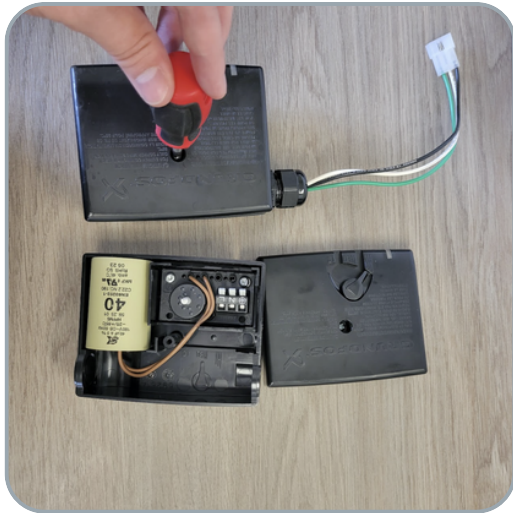


# Floor Mount Pump Cartridge Replacement

## Steps to Prepare New Electrical Box

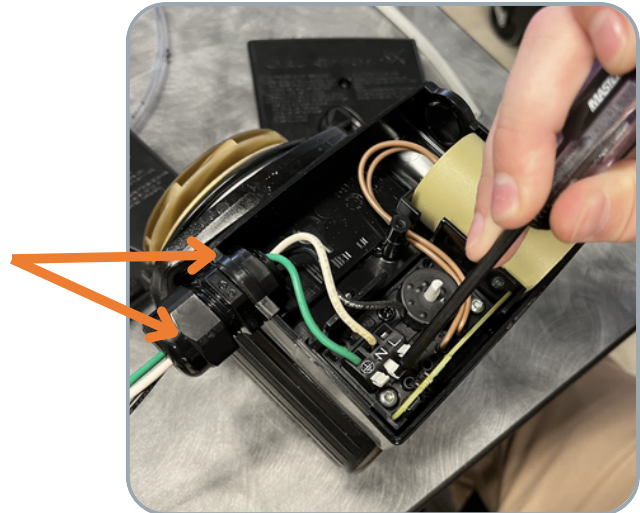
1

Using the Phillips head screwdriver remove the top of both electrical boxes.



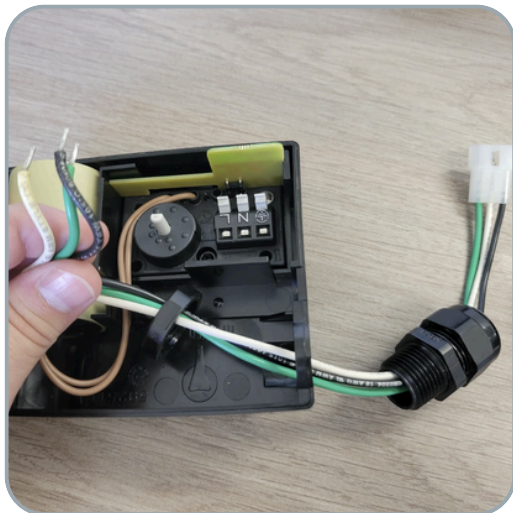
2

Remove the 3 wires that are plugged into the old electrical box, and unscrew the black plastic nuts that hold the wires in.



3

Feed the 3 wires through the black plastic nut on the inside of the new electrical box and install the 3 wires into the new electrical box.



4

Using your hands tighten up the black plastic bolt on the inside and outside of the electrical box.



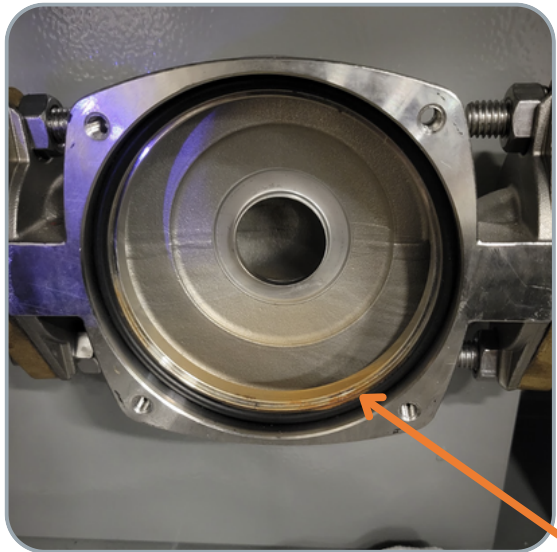


# Floor Mount Pump Cartridge Replacement

## Steps to Install New Pump Cartridge

1

Replace the old O-Ring on the inside with the new supplied O-Ring



2

Screw in the 4 bolts that hold the pump cartridge on the silver volute. Ensure that the connection for the electrical box is facing up.



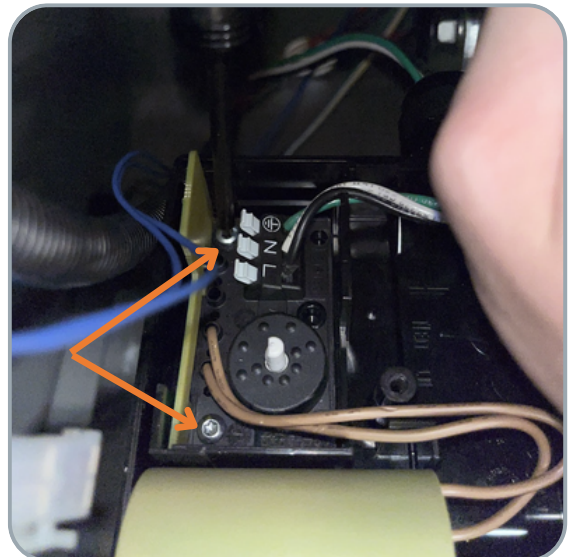
3

Attach the bottom part of the electrical box to the top of the pump.



4

Using the T15 Torx screwdriver, screw in the two screws that hold the bottom of the electrical box to the top of the pump.





# Floor Mount Pump Cartridge Replacement

## Steps to Install New Pump

5

Using a stubby Phillips head screwdriver, screw on the top cover of the electrical box onto the rest of the pump.



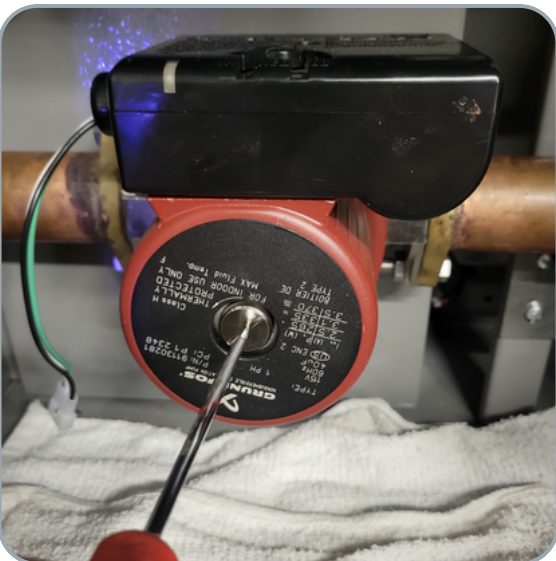
6

Slowly open up the inlet and then the outlet to let the unit fill up with water and pressurize.



7

Using a stubby flat head screwdriver loosen the bleed screw on the pump about 3 turns, and let any air bleed out of the pump. Be prepared with some rags as water may drip out.



8

You can now reconnect any disconnected wires and power the unit back on.

