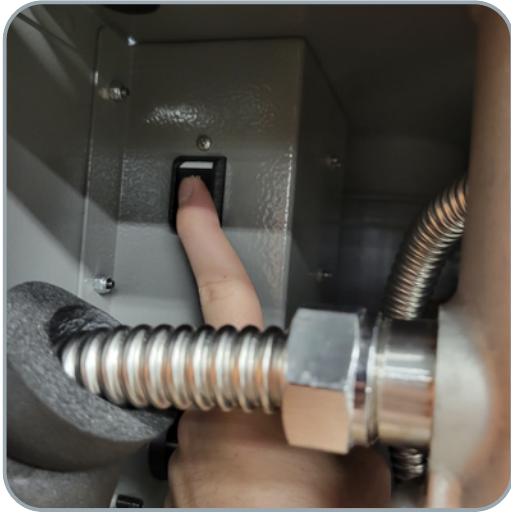


Neuron Unit Draining

Applicable Units: iN199, iN199A, iN251, iN401, iN501

1

Turn the unit off at both rocker switches, turn the unit back on for about 8 to 10 seconds then turn the unit back off at the rocker switches and power off the breaker feeding the unit.



(This forces open all water valves that can open. This will allow the unit to drain completely.)

3

Using the T&P Relief valve, release any excess pressure inside the unit.



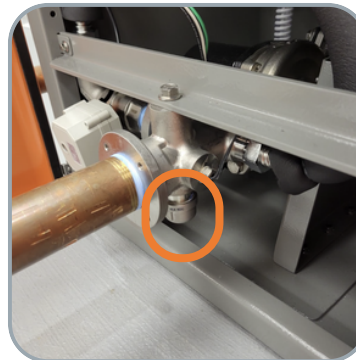
2

Isolate the unit by closing off the inlet, outlet, and recirculation isolation valves.



4

Unscrew the 3/4" cap on the inlet side of the unit, and attach the garden hose to the open port, and let the water drain out.

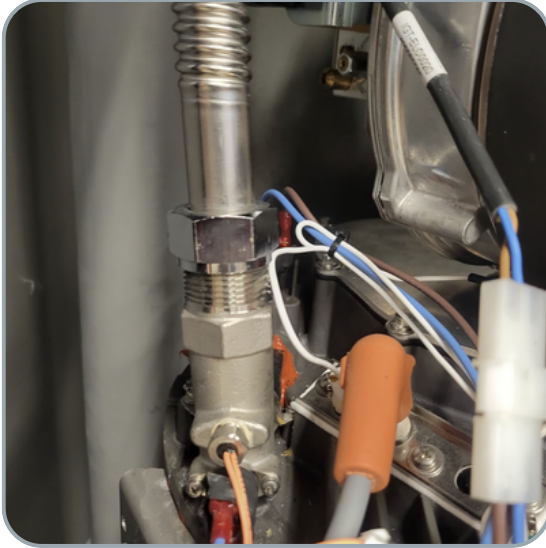


Neuron Unit Pressurization

Applicable Units: iN199, iN199A, iN251, iN401, iN501

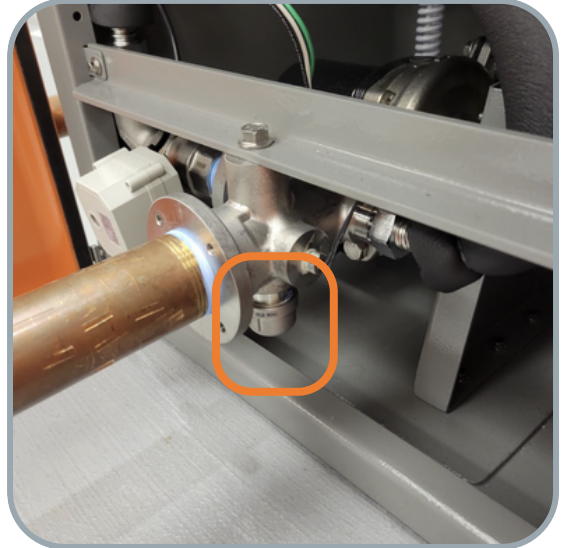
1

Reattach the corrugated lines, do not overtighten as this can degrade the gaskets.



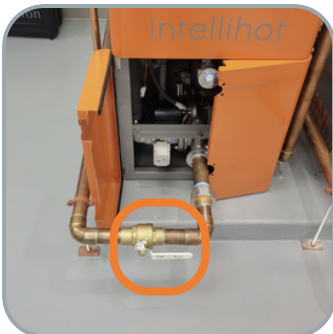
2

Ensure that the drain port is reinstalled with PTFE tape.



3

Slowly open up the outlet isolation valve then slowly open up the inlet isolation valve



4

Using a stubby flat head screwdriver loosen the bleed screw on the pump about 3 turns, and let any air bleed out of the pump. Be prepared with some rags as water may drip out.

