

# Double Stack Unit Draining

Applicable Models: iQ2001, iQ3001

1

Turn the unit off at both rocker switches, turn the unit back on for about 8 to 10 seconds then turn the unit back off at the rocker switches and power off the breaker feeding the unit.



(This forces open all water valves that can open. This will allow the unit to drain completely.)

2

Isolate the unit by closing off the **inlet** and **outlet** isolation valves.



3

Using the T&P Relief valve, release any excess pressure inside the unit.



4

Unscrew the 3/4" cap on the inlet side of the unit, and attach the garden hose to the open port, and let the water drain out.

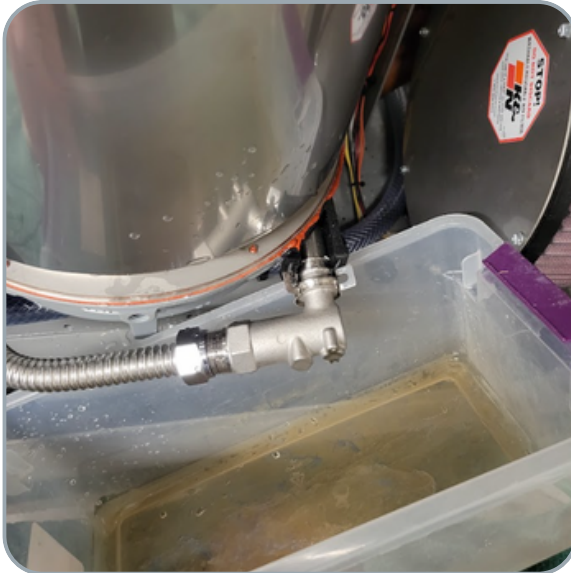


# Double Stack Unit Draining

Applicable Models: iQ2001, iQ3001

5

With the small bucket underneath the inlet of one of the bottom hexes, remove the clip and pull out the inlet elbow, letting water drain into the bucket



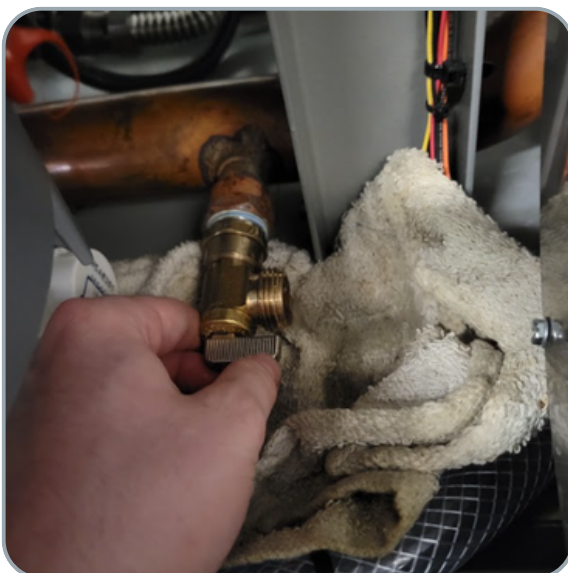
6

You may need to reinsert the elbow, dump out the bucket and repeat step 5, depending on how much water is left and the size of the bucket.



7

Remove the  $\frac{3}{4}$ " cap on the drain port at the back right on the bottom manifold, near the air filter. With a rag prepared open up the drain port. You will most likely need to close up the port and grab a dry rag, Repeat this process until there is no water left in the manifold.



8

Using rags, or paper towels, dry off the bottom of the unit, and recap the drain port.





# Double Stack Unit Pressurization

Applicable Models: iQ2001, iQ3001

1

Ensure that the drain port cap is reinstalled with new PTFE tape.



2

Slowly open the **outlet** isolation valve, then slowly open up the **inlet** isolation valve. Then, using the **T&P** Relief valve, release any excess pressure inside the unit.



3

Using a flat head screwdriver loosen the bleed screw on both pumps about 3 turns, and let any air bleed out of the pump. Be prepared with some rags as water may drip out.



4

open up a faucet and let it run for about 2 to 3 minutes and then turn on the unit at the rocker switches. Then close the bleed screw on both pumps.

