



Intellihot

**THANK  
YOU**

FOR YOUR ORDER

***NOTICE: Seller's warranty shall be void and of no effect if:***

1. Licensed contractor is not used to install products.
2. Buyer uses the products in a manner not intended by Seller or in a manner not disclosed by Buyer; or
3. The breach resulted from the actions or omissions by another party or misuse of the products. For further questions or assistance feel free to reach out to our Customer Support team at: 877-835-1705

# Blower Style D & E Installation

Applicable Units: iN401, iN501, iQ2001, iQ3001

## Blower Types and Applicable units

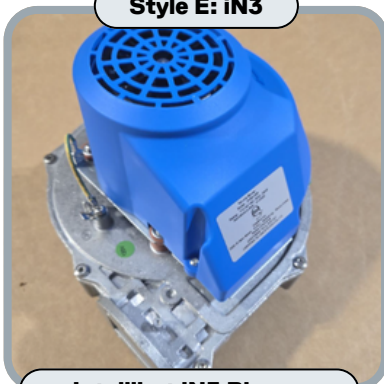
### Blower Styles

#### Style C: Fasco



Intellihot Fasco Blower

#### Style E: iN3



Intellihot iN3 Blower

### Applicable Models

#### Style C: SPR0132

iQ2001 on Software v505 or higher (Release date: 09/08/2021)

iQ3001 on Software v705 or higher (Release date: 09/08/2021)

All iN251 Models

**If the unit already had the Style C Blower installed, it is recommended to replace it with a Style C Blower**

#### Style E: SPR0008R01

All Models and Software

**Requires Combustion Tuning on Installation if replacing a different style of blower.**

**If the unit already had the Style E Blower installed, or a blower that is not on this list, it is recommended to replace it with a Style E Blower**

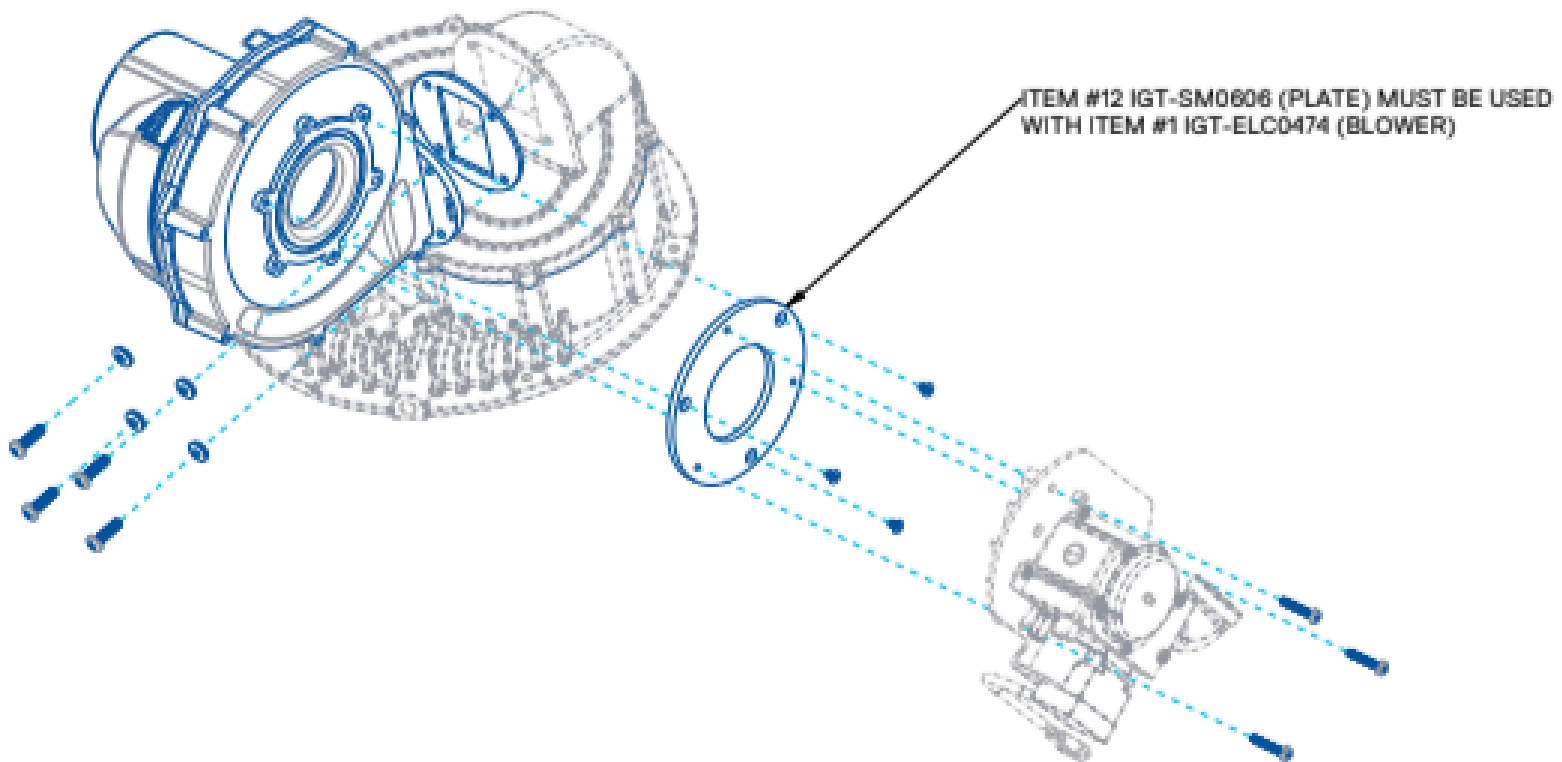
# Blower Style D & E Installation

Applicable Units: iN401, iN501, iQ2001, iQ3001

## Diagram

ITEM	PART NUMBER	DESCRIPTION	QTY	NOTE
1	IGT-ELC0474	INTELLIHOT 300W BLOWER	1	
2	IGT-HRD0023	SCREW, SOCKET CAP, M4 X 0.70 X 10mm LG	4	*
3	IGT-HRD0078	WASHER, SEALING, BONDED, #8	3	*
4	IGT-HRD0079	Screw, Sealing, Phil., Pan (#2), M4 x 0.7 x 16mm	3	*
5	IGT-HRD0154	SCREW, FLAT HEAD, M4 X .5 , SST	3	
6	IGT-HRD0157	SCREW, PAN HD, PHILL, M5 0.8 X 20mm LG	4	
7	IGT-HRD0274	WASHER, SEALING, BONDED, #10	4	
8	IGT-HRD0288	SCREW, TRIANGULAR-SHANK, TORX T20, M4 X 0.7MM THD	3	
9	IGT-OR0005	O-RING, #118, BUNA-N, 70 DURO	2	*
10	IGT-SLS0006	SEAL, BLOWER	1	
11	IGT-SLS0037	SEAL, GAS INLET	1	*
12	IGT-SM0606	PLATE, ADAPTER, FAN, FASCO GALAXY 5.8	1	

NOTE:  
ITEMS MARKED \* IN THE TABLE ARE APPLICABLE FOR WALLHUNG UNITS ONLY.



iN401/iN501, iQ2001 AND iQ3001

# Blower Style D & E Installation

Applicable Units: iN401, iN501, iQ2001, iQ3001

## Tools Required

**TORX T20 Screwdriver**



**7" to 9" long Phillips head screwdriver**

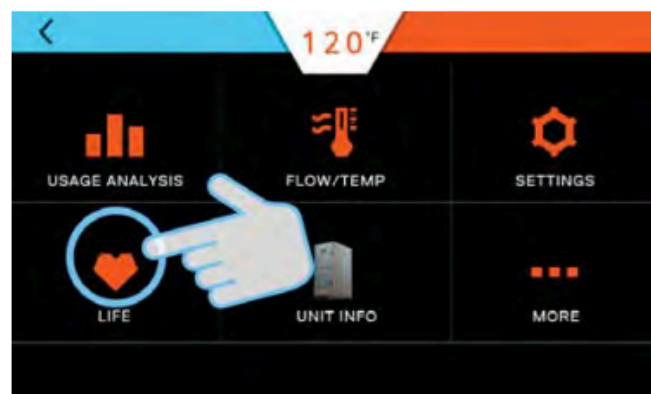


**Thin Flat head Screwdriver (<0.18 in)**



## Part Life Reset

After replacing the blower reset the blower part life on the display by tapping the top 3 lines, then go to "Life" then select the correct hex (floor mount only) and press and hold on "Blower" and put in code: 2009



Press the (+) button to show the details of the various heat engines.





# Blower Style D & E Installation

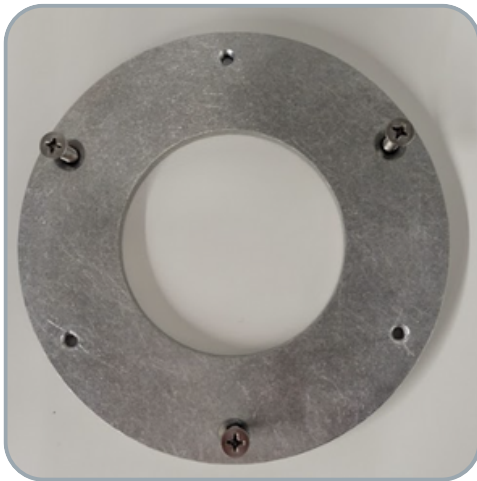
Applicable Units: iN401, iN501, iQ2001, iQ3001

## Installing the Adapter Plate

**Note: If the adapter plate is not installed or incorrectly installed, the unit will not operate as designed**

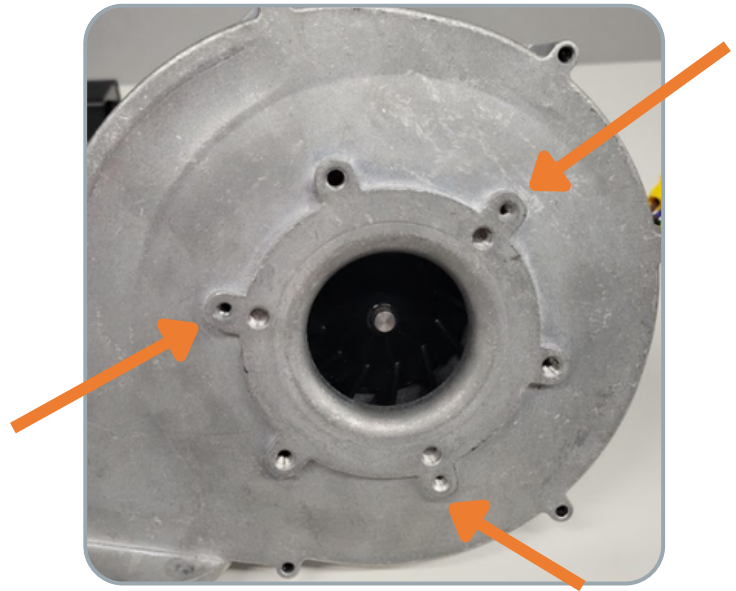
1

Insert the 3 countersink screws (HRD0154) into the 3 countersunk holes in the metal adapter plate (SM0606).



2

There are 3 out of the 9 holes on the blower that are smaller than the other 6 holes. Line up the 3 screws on the adapter plate with these 3 holes.



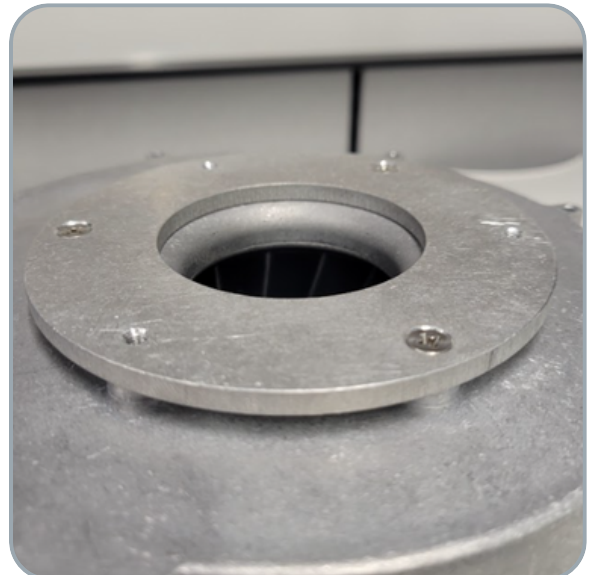
3

Using a Phillips head screwdriver, tighten down all 3 screws to attach the adapter plate to the blower.



4

When complete all 3 screws should be flush with the adapter plate.



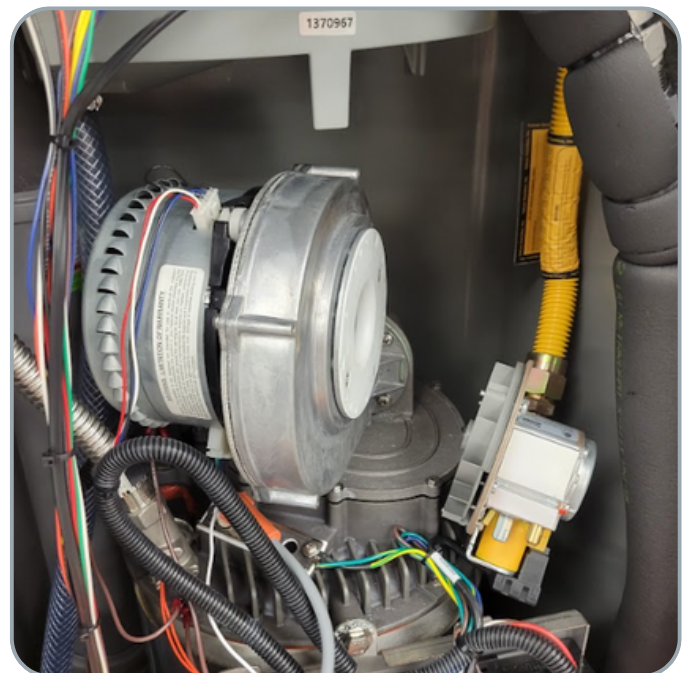
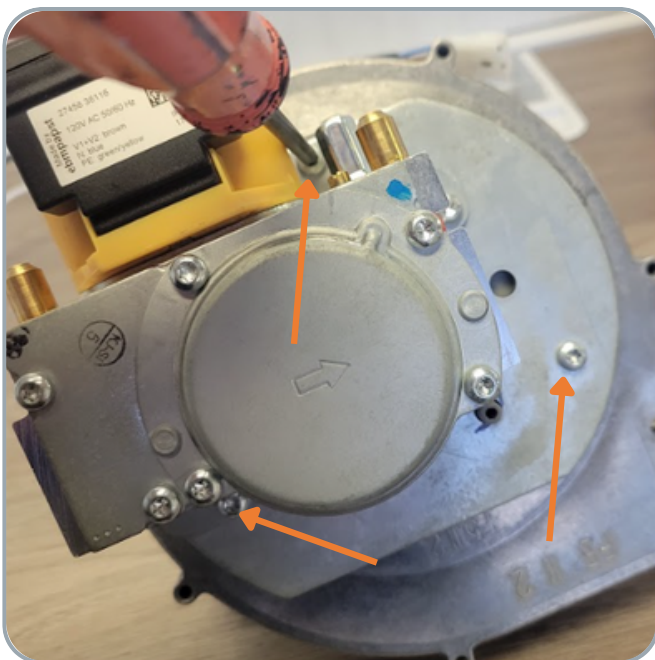
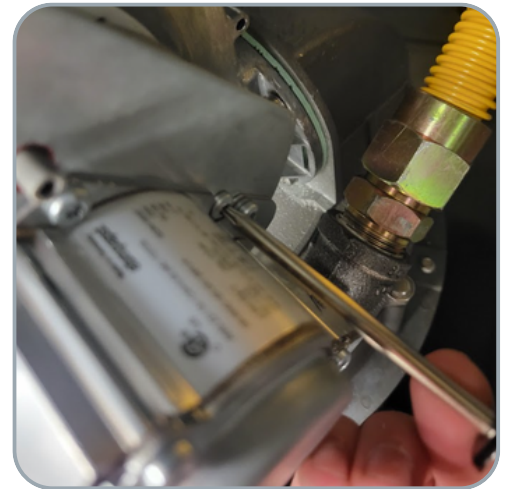
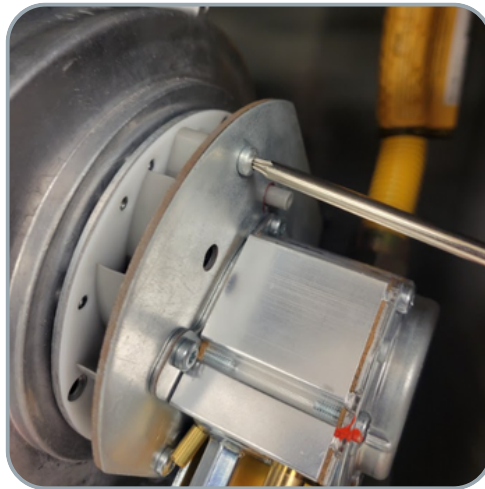
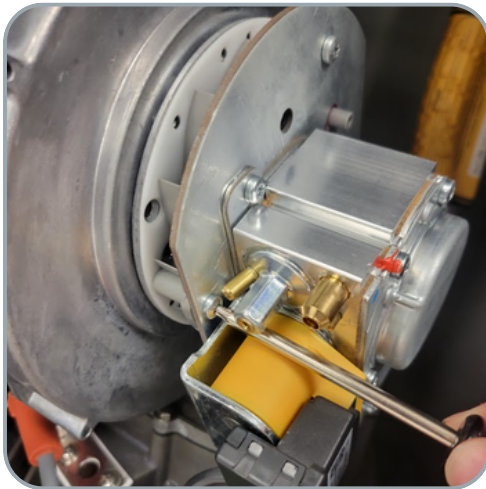
# Blower Style D & E Installation

Applicable Units: iN401, iN501, iQ2001, iQ3001

## Removing the Old Blower

1

Using a Torx T20 screwdriver, loosen the 3 screws (HRD0288) that hold the gas valve and swirl plate to the blower. Move the gas valve out of the way to make more space to remove the blower.





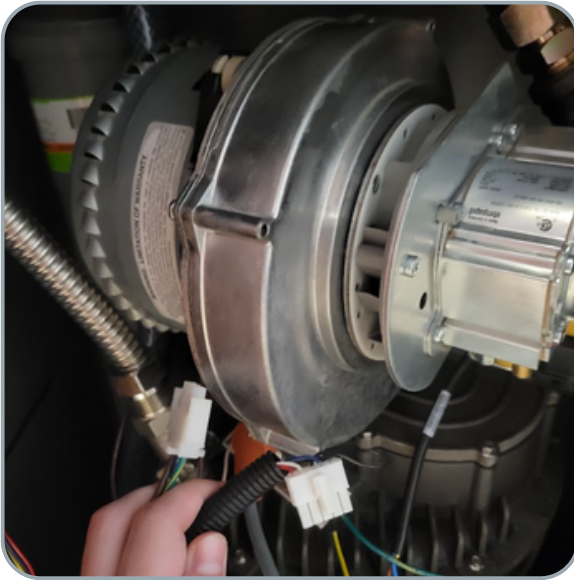
# Blower Style D & E Installation

Applicable Units: iN401, iN501, iQ2001, iQ3001

## Removing the Old Blower

2

Unplug the 3 pin power harness, and the 5 pin speed control harness from the blower.



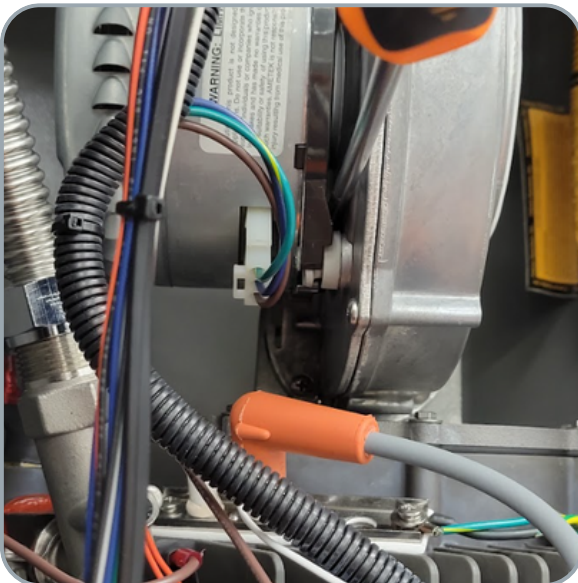
3

Using a 9" long Phillips head screwdriver remove the 4 screws (HRD0157) that hold the blower to the top plate of the heat exchanger.



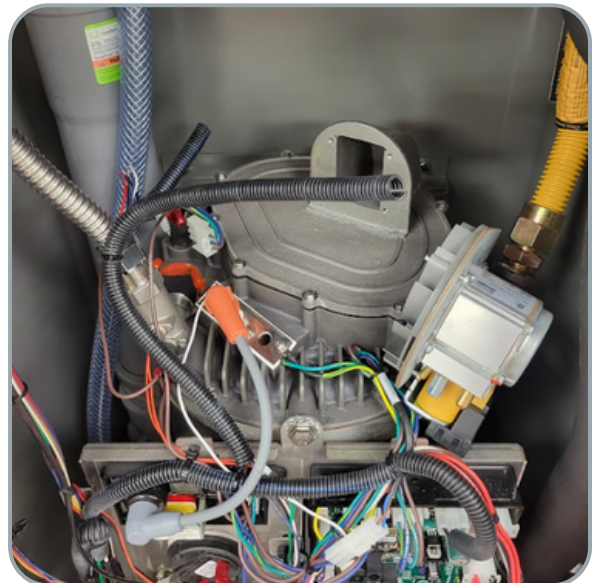
4

You will need to feed the 9" Philips head screwdriver through the gap in the blower to get to one of the screws.



5

Remove the old blower.



# Blower Style D & E Installation

Applicable Units: iN401, iN501, iQ2001, iQ3001

## Installing the New Blower

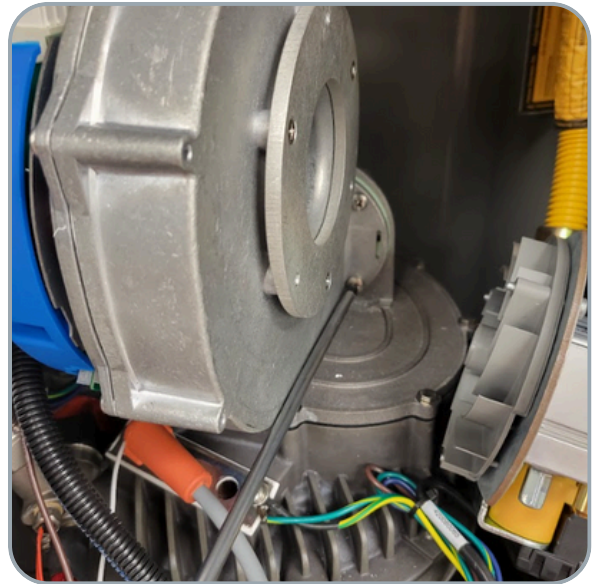
1

Insert the 4 screws (HRD0157) and washers (HRD0008) into the 4 holes on the base of the blower and insert the green seal. (SLS0006)



2

Place the blower on the top cast and using a 9" Phillips head screwdriver install all 4 screws (HRD0157) then tighten them down.



3

Line the gas valve and swirl plate up to the blower and using a Torx T20 Screwdriver install the 3 screws (HRD0288) through the gas valve and swirl plate and tighten them into the adapter plate



4

Plug the 5 pin speed control harness into the blower, and then plug the 3 pin power harness into the power harness adapter. (ELC0358)





# Blower Style D & E Installation

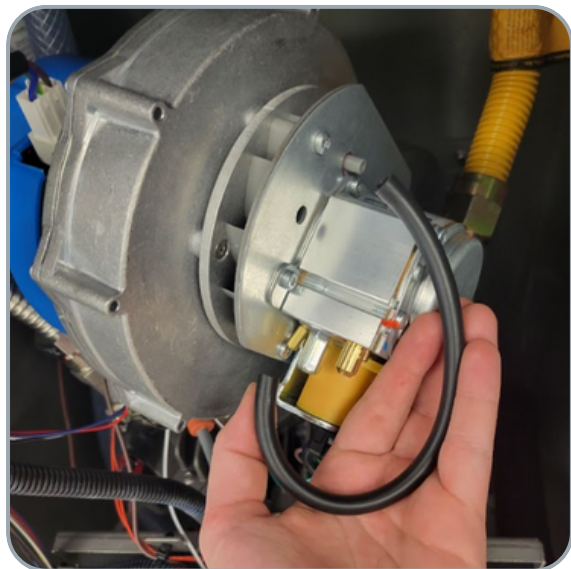
Applicable Units: iN401, iN501, iQ2001, iQ3001

## Combustion Tuning

**Note:** If you are replacing a different style of blower with the Type E blower, please follow the instructions below

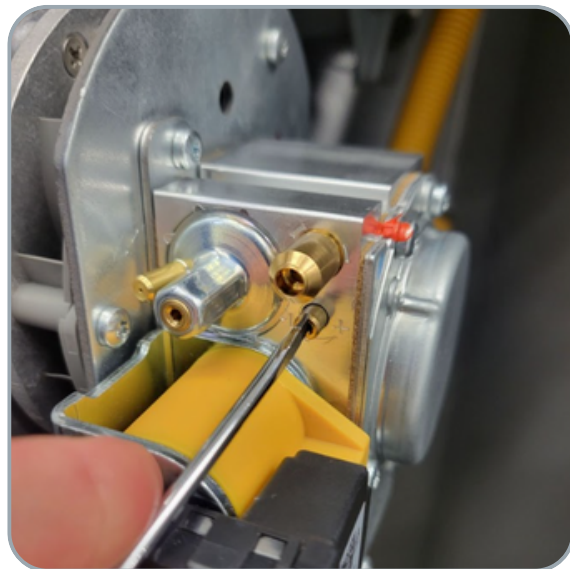
1

Remove the black tube that is connected to the gas valve.



2

Make approximately 2 turns counterclockwise on the high fire screw. (Towards the plus sign.)



**Note:** If you are still experiencing combustion rumbling keep increasing the high fire screw by  $\frac{1}{4}$  turn at a time until the combustion rumbling subsides.

**Note:** This process is to get the unit up and running, however, you will need to combustion tune with an analyzer to ensure tuning is properly within range