



Intellihot

**THANK  
YOU**

FOR YOUR ORDER

***NOTICE: Seller's warranty shall be void and of no effect if:***

1. Licensed contractor is not used to install products.
2. Buyer uses the products in a manner not intended by Seller or in a manner not disclosed by Buyer; or
3. The breach resulted from the actions or omissions by another party or misuse of the products. For further questions or assistance feel free to reach out to our Customer Support team at: 877-835-1705

# Blower Style D & E Installation

Applicable Units: i200, i250, iQ251, iQ251D

## Blower Types and Applicable units

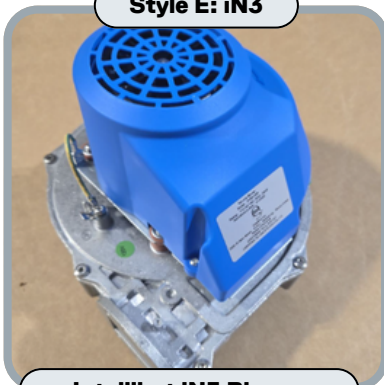
### Blower Styles

Style D



Intellihot iN2 Blower

Style E: iN3



Intellihot iN3 Blower

### Applicable Models

#### Style D: SPR0134

All iN199, and iN199A Models

i200 on Software v526 or higher (Release date: 11/23/2021)

i250 on Software v576 or higher (Release date: 11/23/2021)

iQ251 on Software v176 or higher (Release date: 11/23/2021)

iQ251D on Software v476 or higher (Release date: 11/23/2021)

iQ751 on Software v882 or higher (Release date: 8/17/2021)

iQ1001 on Software v982 or higher (Release date: 8/17/2021)

**If the unit already had the Style D Blower installed, it is recommended to replace it with a Style D Blower**

#### Style E: SPR0008R01

All Models and Software

**Requires Combustion Tuning on Installation if replacing a different style of blower.**

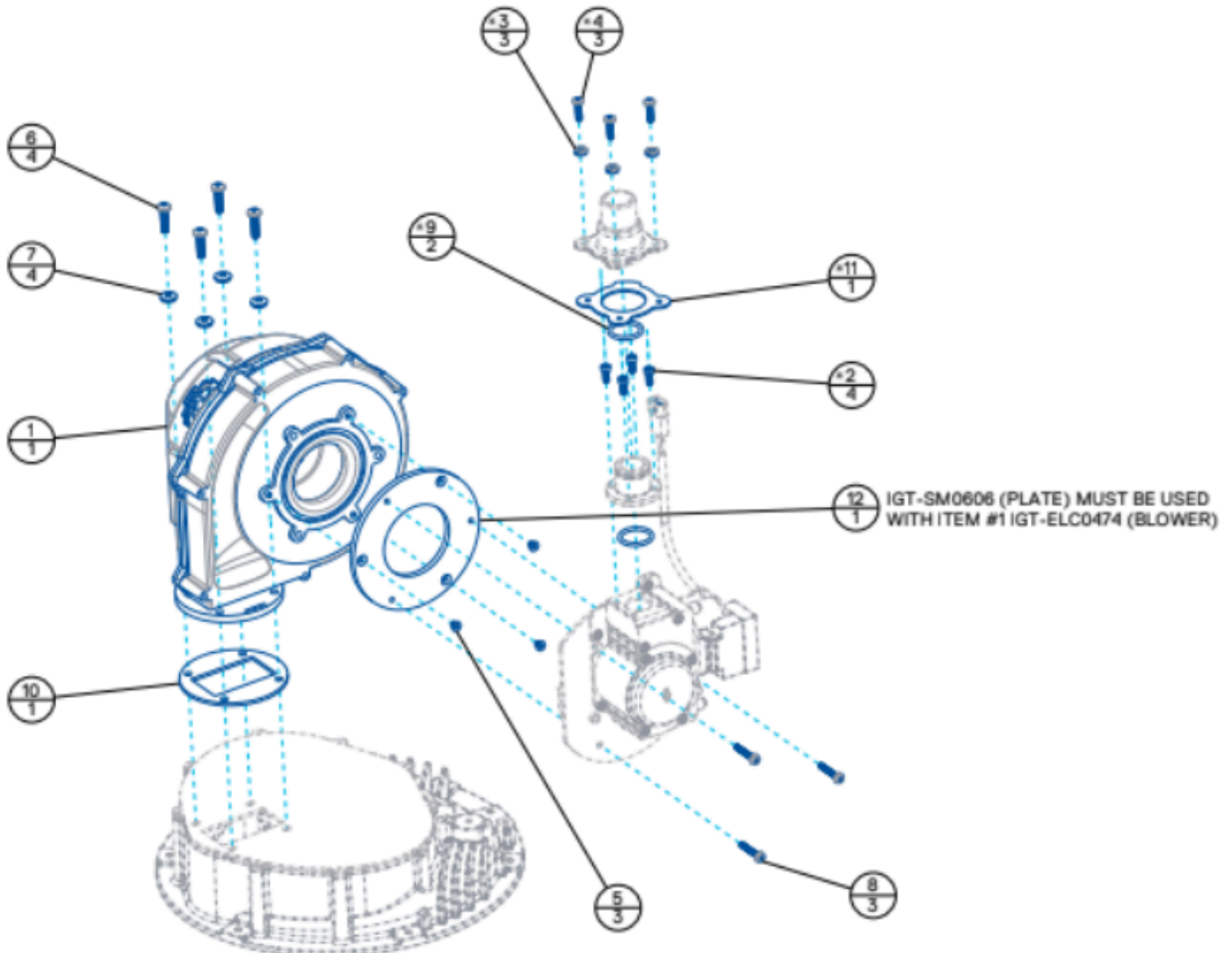
**If the unit already had the Style E Blower installed, or a blower that is not on this list, it is recommended to replace it with a Style E Blower**

# Blower Style D & E Installation

Applicable Units: i200, i250, iQ251, iQ251D

## Diagram

ITEM	PART NUMBER	DESCRIPTION	QTY	NOTE
1	IGT-ELC0474	INTELLIHOT 300W BLOWER	1	
2	IGT-HRD0023	SCREW, SOCKET CAP, M4 X 0.70 X 10mm LG	4	*
3	IGT-HRD0078	WASHER, SEALING, BONDED, #8	3	*
4	IGT-HRD0079	Screw, Sealing, Phil., Pan (#2), M4 x 0.7 x 16mm	3	*
5	IGT-HRD0154	SCREW, FLAT HEAD, M4 X .5 , SST	3	
6	IGT-HRD0157	SCREW, PAN HD, PHILL, M5 0.8 X 20mm LG	4	
7	IGT-HRD0274	WASHER, SEALING, BONDED, #10	4	
8	IGT-HRD0288	SCREW, TRIANGULAR-SHANK, TORX T20, M4 X 0.7MM THD	3	
9	IGT-OR0005	O-RING, #118, BUNA-N, 70 DURO	2	*
10	IGT-SLS0006	SEAL, BLOWER	1	
11	IGT-SLS0037	SEAL, GAS INLET	1	*
12	IGT-SM0606	PLATE, ADAPTER, FAN, FASCO GALAXY 5.8	1	



# Blower Style D & E Installation

Applicable Units: i200, i250, iQ251, iQ251D

## Tools Required

### TORX T20 Screwdriver



### 7" to 9" long Phillips head screwdriver



### Thin Flat head Screwdriver (<0.18 in)



### 5.5 mm Socket and Ratchet



### Molykote 111



### O-Ring Pick

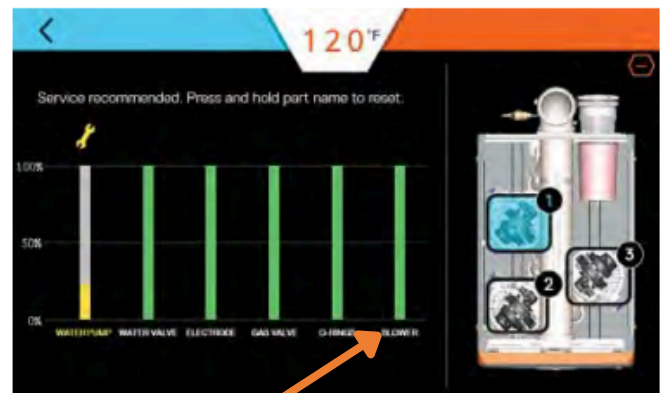


## Part Life Reset

After replacing the blower reset the blower part life on the display by tapping the top 3 lines, then go to "Life" then select the correct hex (floor mount only) and press and hold on "Blower" and put in code: 2009



Press the (+) button to show the details of the various heat engines.





# Blower Style D & E Installation

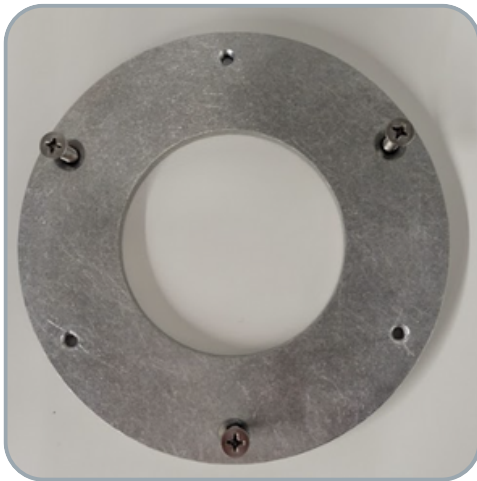
Applicable Units: i200, i250, iQ251, iQ251D

## Installing the Adapter Plate

**Note: If the adapter plate is not installed or incorrectly installed, the unit will not operate as designed**

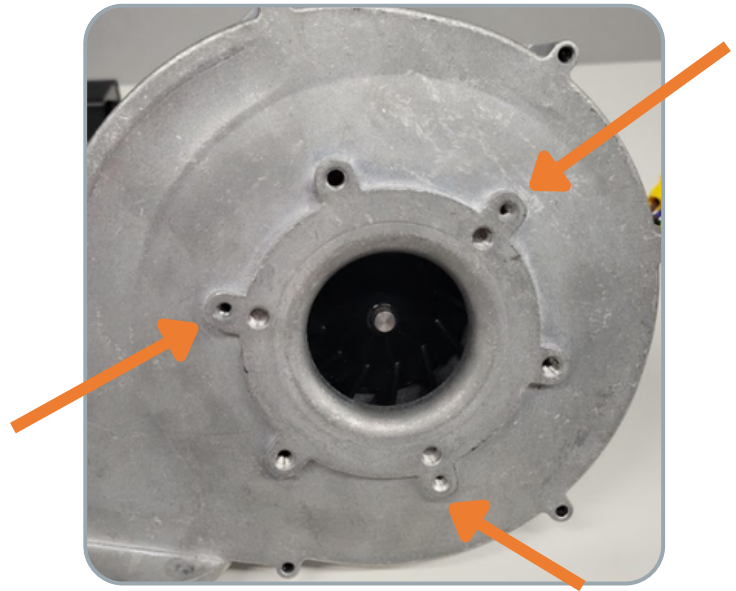
1

Insert the 3 countersink screws (HRD0154) into the 3 countersunk holes in the metal adapter plate (SM0606).



2

There are 3 out of the 9 holes on the blower that are smaller than the other 6 holes. Line up the 3 screws on the adapter plate with these 3 holes.



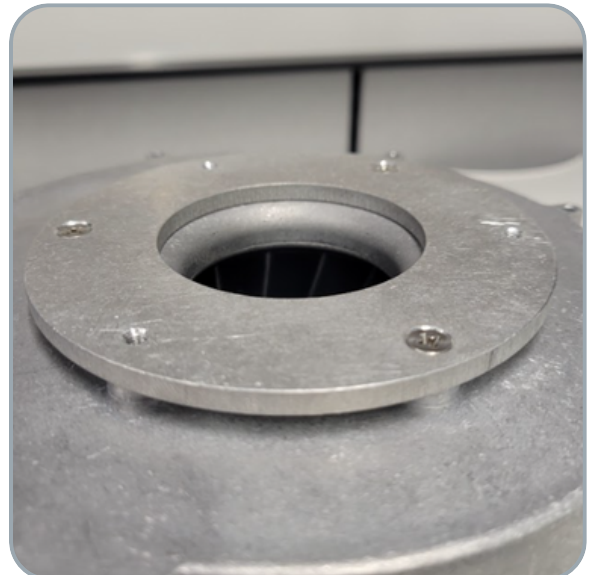
3

Using a Phillips head screwdriver, tighten down all 3 screws to attach the adapter plate to the blower.



4

When complete all 3 screws should be flush with the adapter plate.



# Blower Style D & E Installation

Applicable Units: i200, i250, iQ251, iQ251D

## Removing the Old Blower

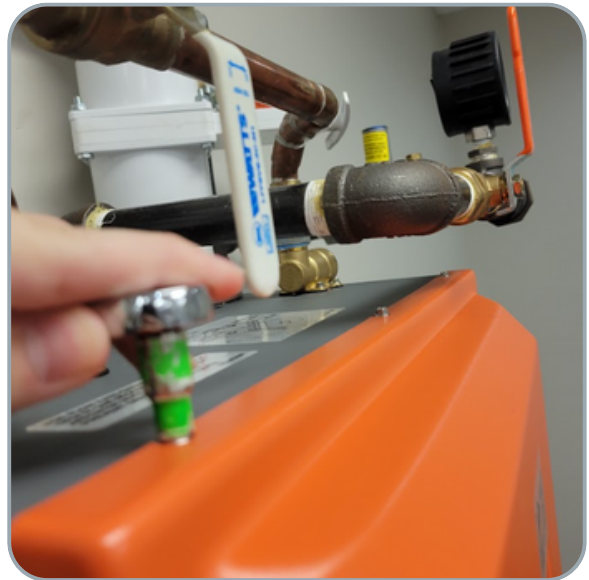
1

Turn gas off to the unit, and then power the unit off.



2

Using a 5.5 mm Socket and Ratchet loosen up the 6 screws that hold the front cover on the unit.



3

Unplug the display from the cover and move the cover out of the way.



4

Push up on the metal bracket and move it out of the way.





# Blower Style D & E Installation

Applicable Units: i200, i250, iQ251, iQ251D

## Removing the Old Blower

5

Using a Phillips head screwdriver, remove the 3 screws (HRD0079) and 3 washers (HRD0078) that hold the gas line adapter to the unit.



6

Remove the gas line adapter from the unit. (This will differ depending on how the unit was installed, please ensure a certified tech completes this step.)



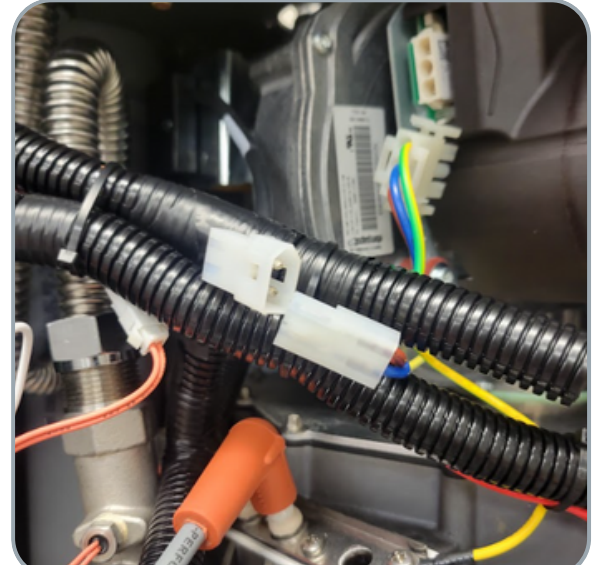
7

Unplug the High Voltage cable from the DSI, and move it out of the way



8

Unplug the 3 pin power harness from the blower and unplug the 2 pin gas valve power harness.



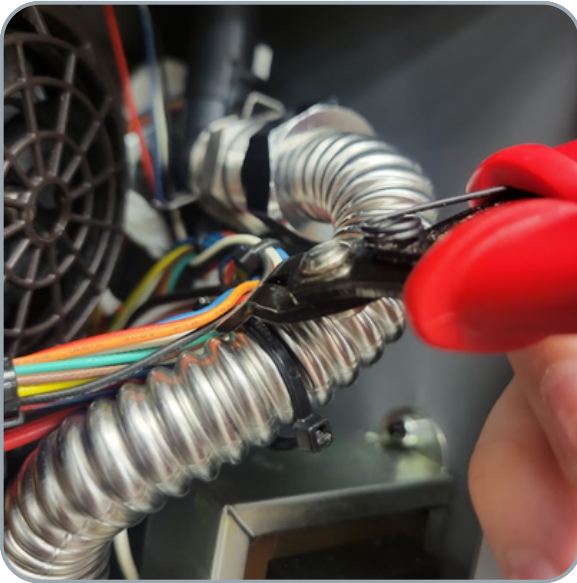
# Blower Style D & E Installation

Applicable Units: i200, i250, iQ251, iQ251D

## Removing the Old Blower

9

Cut the zip tie that holds the harness to the inlet corrugated line.



10

Cut the zip tie that holds the gas valve harness in place.



11

Remove the 2 service port caps on the top of the unit.



12

Insert a 9" Phillips head screwdriver into the front service port and remove the front 2 screws that hold the blower into the top plate.





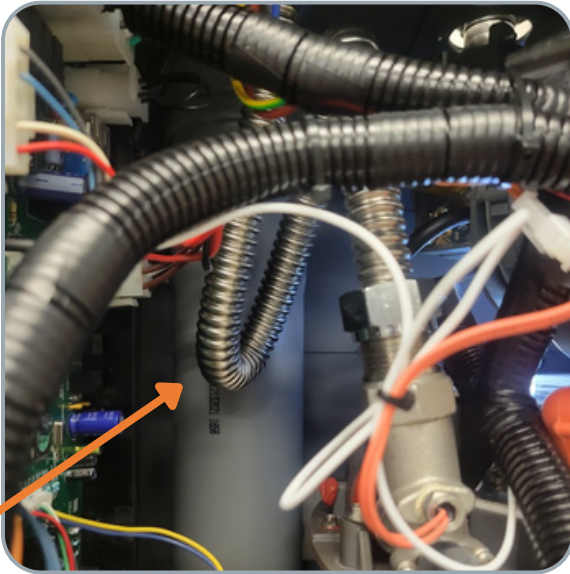
# Blower Style D & E Installation

Applicable Units: i200, i250, iQ251, iQ251D

## Removing the Old Blower

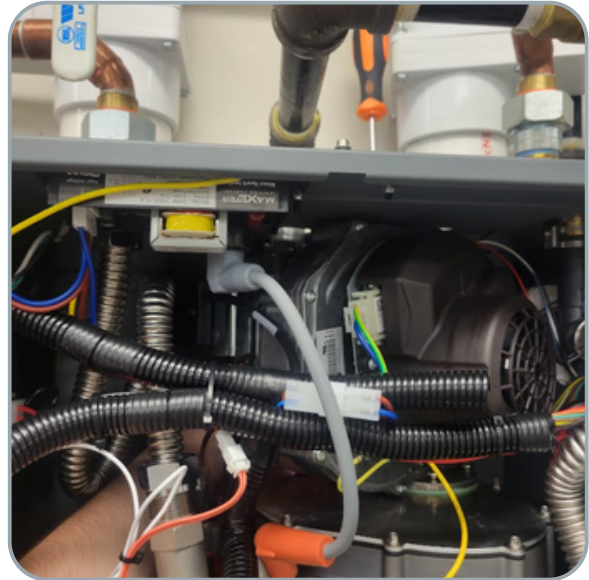
13

Bend the outlet corrugated line slightly out of the way so that you can get your hand behind the blower.



14

Insert a 9" Phillips head screwdriver into the back service port and use your hand to line up the screwdriver to remove the back 2 screws.



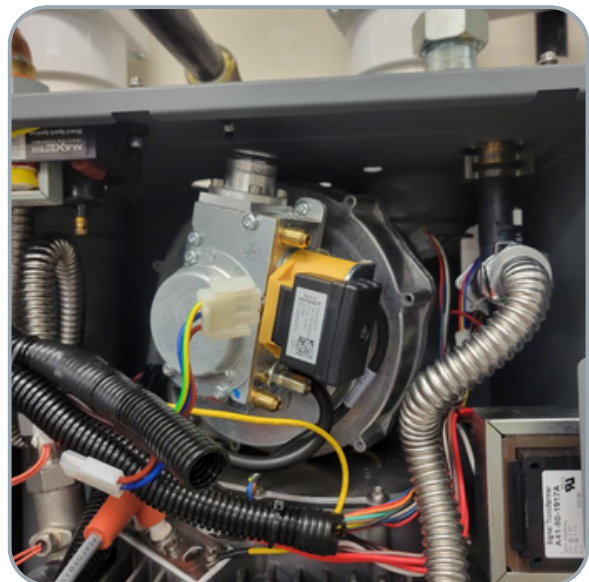
15

Tilt the blower down and towards the front of the unit so that the 5 pin speed control harness can be unplugged.



16

Angle the blower and gas valve so that the gas valve is facing the front of the unit.



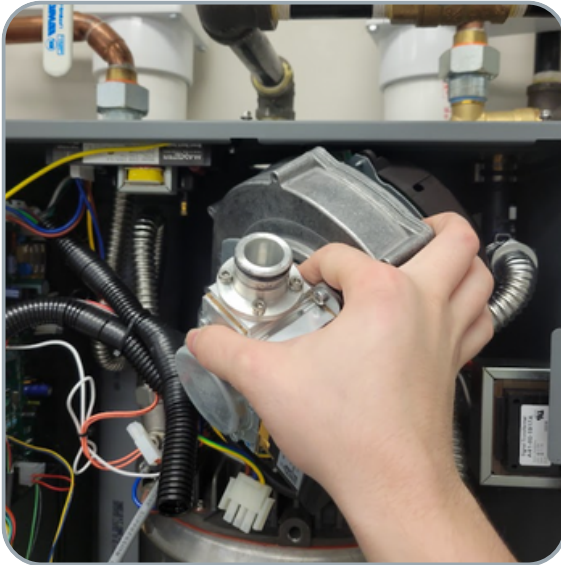
# Blower Style D & E Installation

Applicable Units: i200, i250, iQ251, iQ251D

## Removing the Old Blower

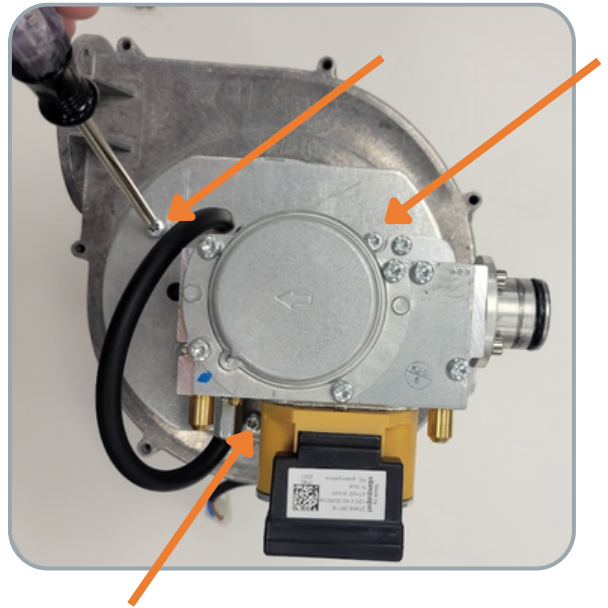
17

Slide the blower and gas valve assembly out of the unit.



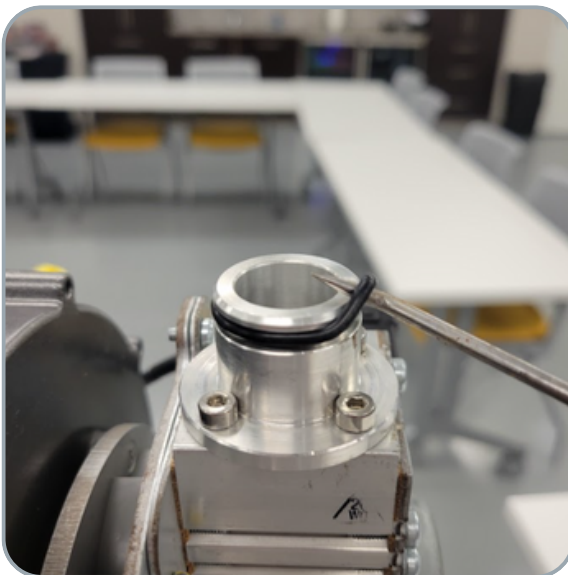
18

Using a Torx T20 screwdriver remove the 3 screws (HRD0288) that hold the gas valve and swirl plate to the blower.



19

Using a O-Ring pick, remove the old O-Ring (OR0005) from the gas valve adapter.





# Blower Style D & E Installation

Applicable Units: i200, i250, iQ251, iQ251D

## Installing the New Blower

1

Insert the 4 screws (HRD0157) and washers (HRD0008) into the 4 holes on the base of the blower and insert the green seal. (SLS0006)



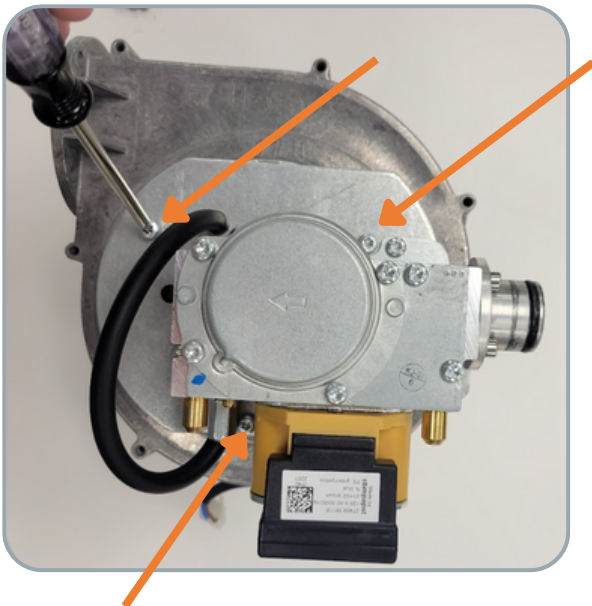
2

Place the gas valve and swirl plate onto the new blower, please see the picture below for the correct orientation.



3

Install the 3 screws (HRD0288) that hold the gas valve and swirl plate to the blower adapter plate.



4

Apply Molykote 111 to the gas valve adapter O-Ring (OR0005), and install the O-Ring.



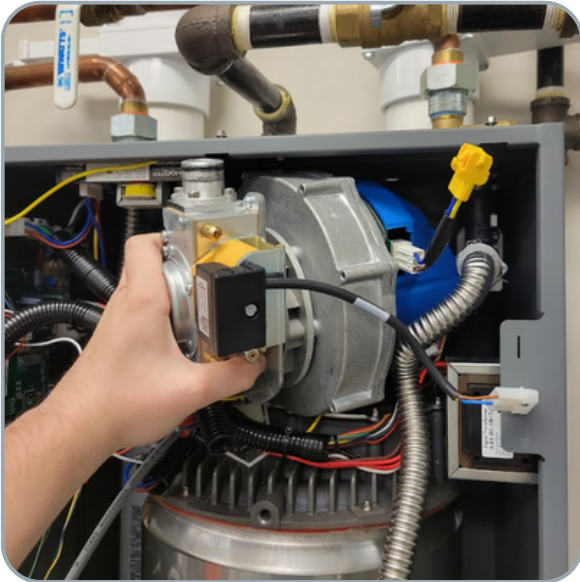
# Blower Style D & E Installation

Applicable Units: i200, i250, iQ251, iQ251D

## Installing the New Blower

5

Insert the blower and gas valve assembly into the unit, with the gas valve facing the front of the unit.



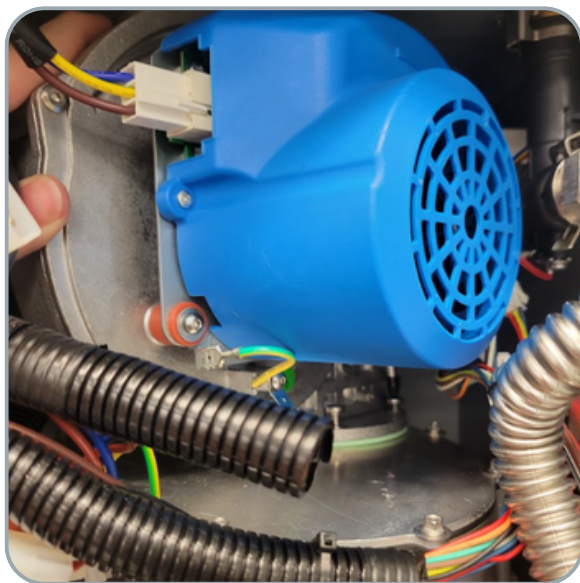
6

Turn the blower and gas valve assembly around so that you can install the 5 pin speed control harness.



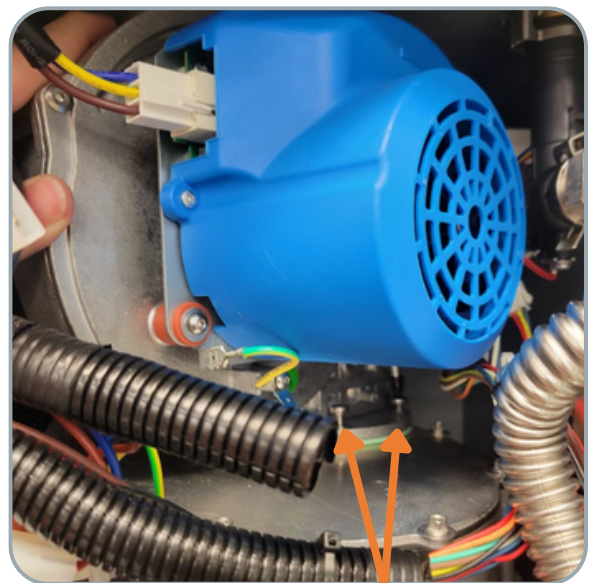
7

Line up the blower and gas valve assembly onto the top plate and into the gas line port on the top of the unit. Use your hand to keep the blower in place while installing the screws.



8

Insert a 9" Phillips head screwdriver into the front service port and thread the front 2 screws that hold the blower into the top plate.





# Blower Style D & E Installation

Applicable Units: i200, i250, iQ251, iQ251D

## Installing the New Blower

9

Insert a 9" Phillips head screwdriver into the back service port and use your hand to line up the screwdriver to install the back 2 screws, then tighten up the front 2 screws.



10

Replace the gas line adapter seal (SLS0037)



11

Using a Phillips head screwdriver, install the 3 screws (HRD0079) and 3 washers (HRD0078) that hold the gas line adapter to the unit.



12

Plug in the high voltage cable, the 2 wire gas valve power harness, and the 3 wire blower power harness, and check for any gas leaks.



# Blower Style D & E Installation

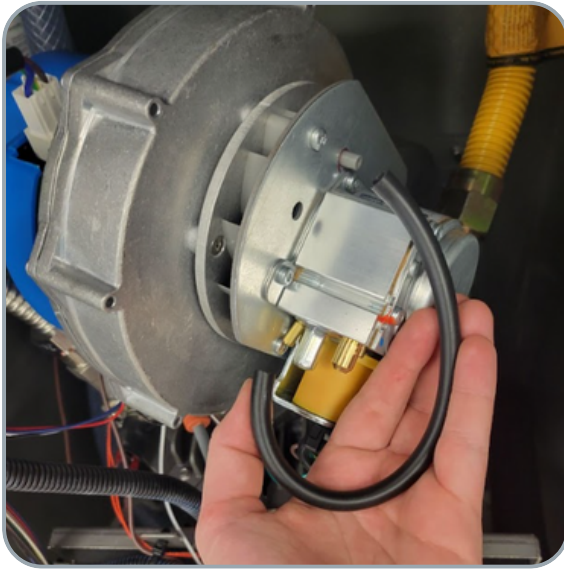
Applicable Units: i200, i250, iQ251, iQ251D

## Combustion Tuning

**Note:** If you are replacing a different style of blower with the Type E blower, please follow the instructions below

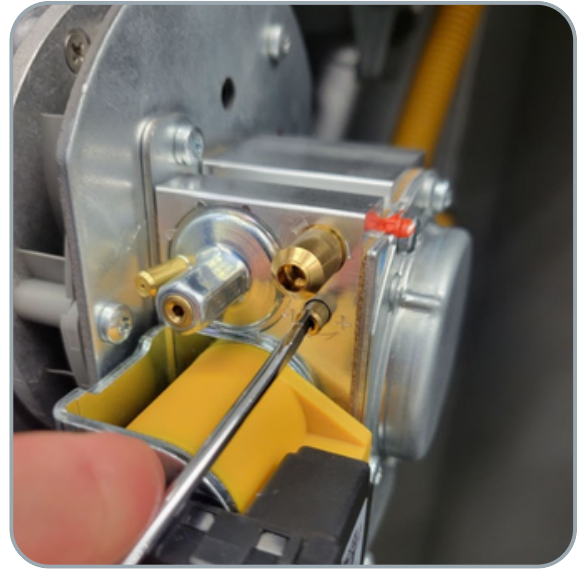
1

Remove the black tube that is connected to the gas valve.



2

Make approximately 2 turns counterclockwise on the high fire screw. (Towards the plus sign.)



**Note:** If you are still experiencing combustion rumbling keep increasing the high fire screw by  $\frac{1}{4}$  turn at a time until the combustion rumbling subsides.

**Note:** This process is to get the unit up and running, however, you will need to combustion tune with an analyzer to ensure tuning is properly within range