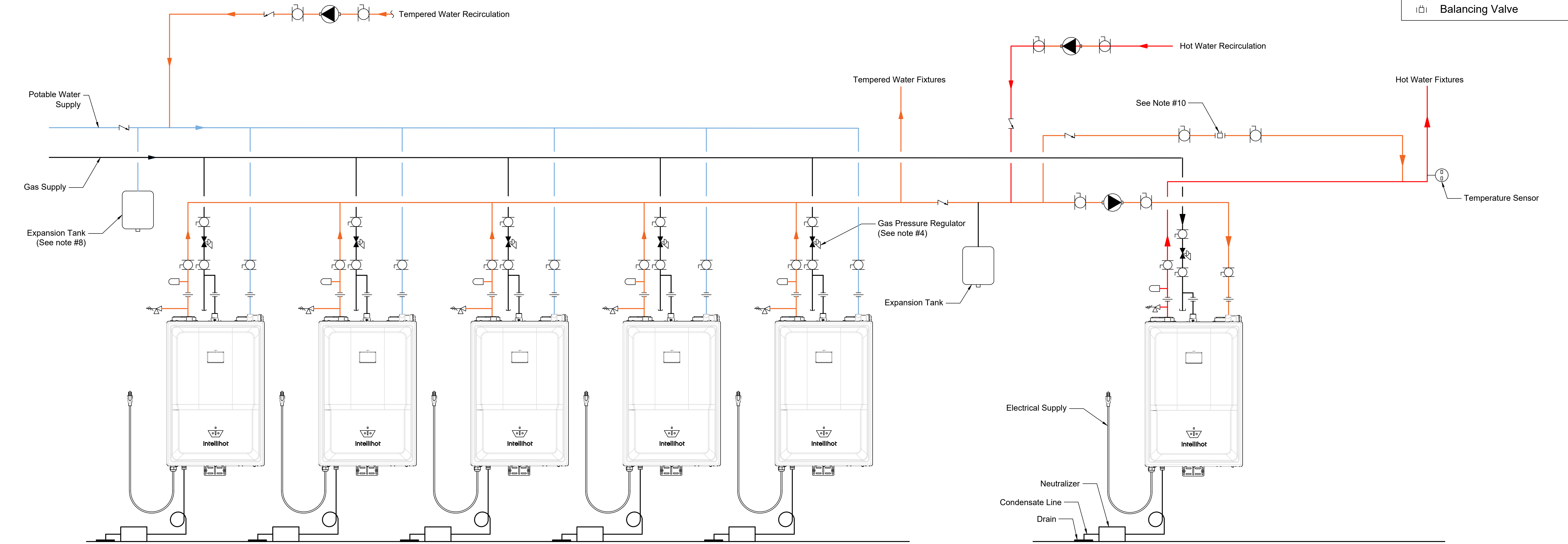


i200 / iQ251 (5 Units) + i200 / iQ251 Booster (1 Unit)

Ambient Temperature Range: 40 - 130°F  
Units are not to scale

LEGEND	
	T&P Relief Valve
	Isolation Valve
	Check Valve
	Pipe Coupling
	Sediment Trap
	Recirculation Pump
	Water Hammer Arrestor
	Gas Pressure Regulator
	Balancing Valve



Notes:

1. This schematic is a suggested piping diagram. Any additional requirements from local codes and ordinances shall supersede this diagram.
2. Units are not to be installed in a closed loop system. Our gas fired units are HLW stamped.
3. For pipe sizes and gas pressure requirements, please refer to the operation and installation manual.
4. Gas pressure regulators to be installed for each unit. Follow manufacturer's installation instructions.
5. Water hammer arrestor to be installed within 20 ft of the unit on the hot water supply.
6. Y-strainer is built into the wall unit and accessible for service from the outside.
7. Temperature and pressure relief valve (shipped with the unit) to be installed on the hot water supply.
8. Expansion tank to be sized based on the gallons of water in the plumbing system and to be installed per manufacturer's instruction.
9. Venting materials for the unit should be CPVC, approved polypropylene, or AL29-4C stainless steel.
10. Adjust balancing valve and/or booster set temperature so that required fixture temperature is obtained on high temperature circuit.

This document/drawing contains confidential and proprietary information and is the property of Intellihot Green Technologies, Inc. This document/drawing was prepared for the sole purpose of soliciting quotes, producing samples, or propose services. It is submitted in confidence on the condition that you and your representatives have, but receiving it, agreed not to reproduce or copy it, in whole or in part, or to furnish such information to others, or to make an other use of it except for the purposes stated above.

DRAWING NUMBER:  
JOB NAME:

