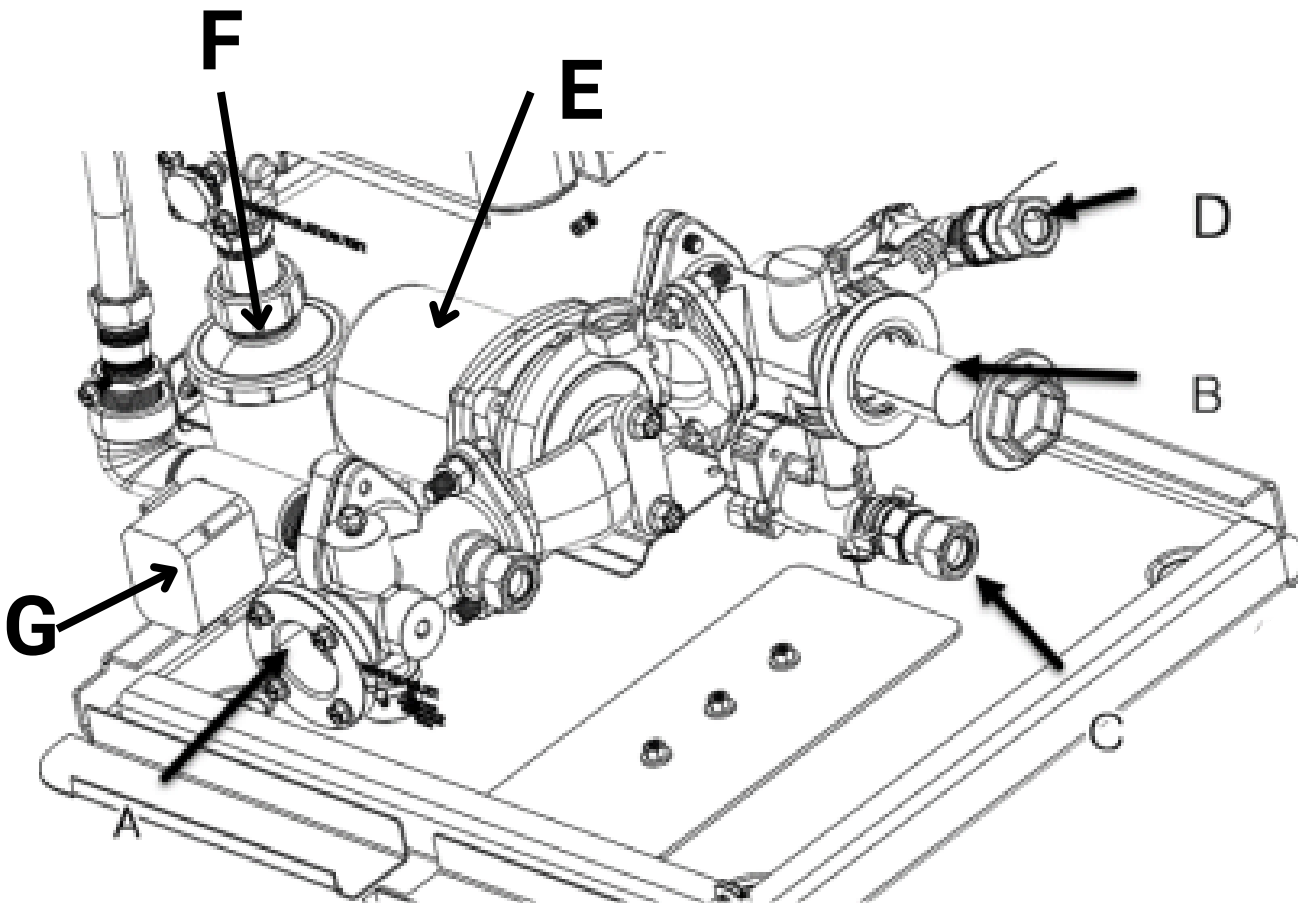


# Neuron Bottom Water Valve Replacement

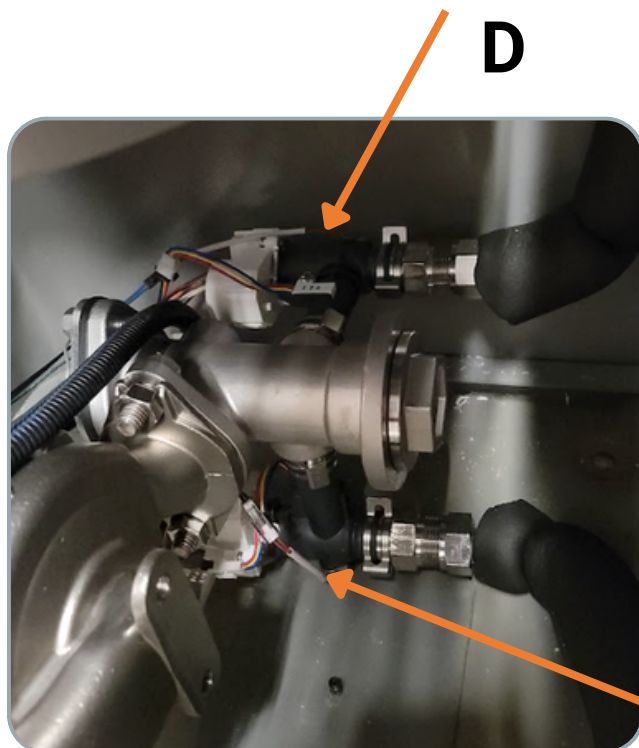
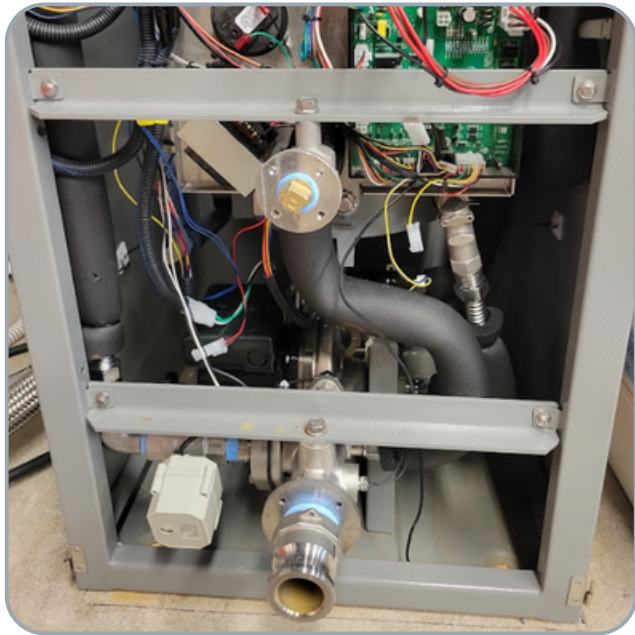
## Diagram

Item	Part Description
A	Water Inlet Connection
B	Internal Inlet Strainer
C & D	Water Valve/ Flow Sensor/Inlet Temp Sensor Assembly
E	Water Pump
F	Condensate Cup
G	Bypass Valve



## Pictures

To allow for better pictures I have removed the recirc port, corrugated recirc hose, and the pump mount, this is not required to replace these valves. I have also included a couple more pictures to help show the location of the valves.



# Neuron Bottom Water Valve Replacement

## Tools Required

10 mm Socket and Ratchet



Molykote 111



Stubby Flat Head Screwdriver

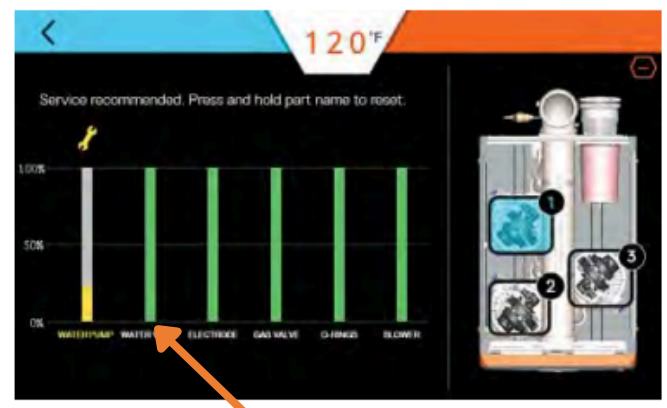


## Other Notes

After replacing the pump, reset the pump part life on the display by tapping the top 3 lines, then go to "Life" and select the bottom heat exchanger and then press and hold on "Water Valve" and put in code: 0721



Press the (+) button to show the details of the various heat engines.

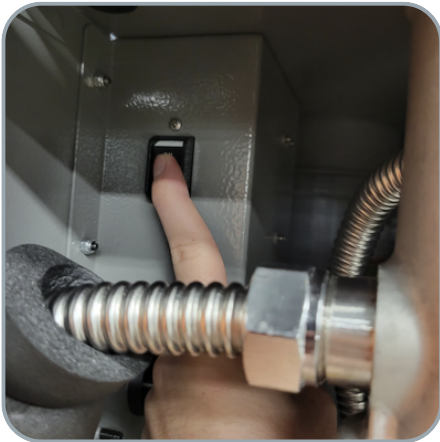


# Neuron Bottom Water Valve Replacement

## Steps to Drain Unit

1

Turn the unit off at both rocker switches, turn the unit back on for about 8 to 10 seconds then turn the unit back off at the rocker switches and power off the breaker feeding the unit.



(This forces open all water valves that can open. This will allow the unit to drain completely.)

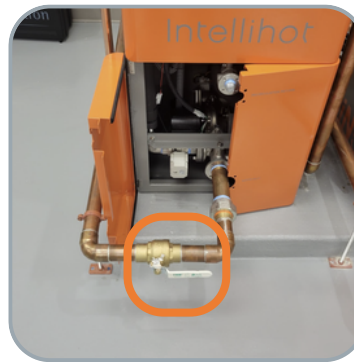
3

Using the T&P Relief valve, release any excess pressure inside the unit.



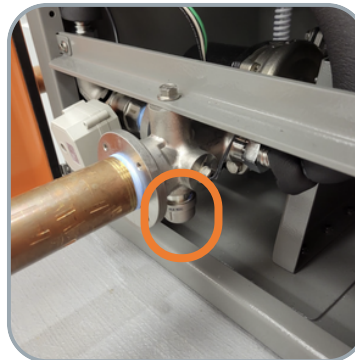
2

Isolate the unit by closing off the inlet, outlet, and recirculation isolation valves.



4

Unscrew the 3/4" cap on the inlet side of the unit, and attach the garden hose to the open port, and let the water drain out.

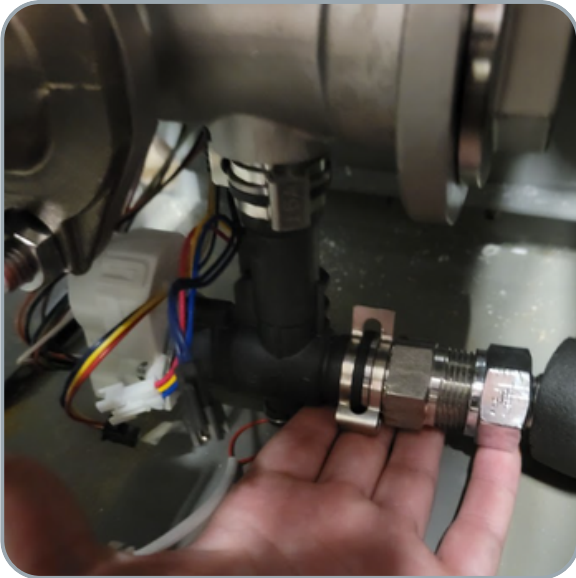


# Neuron Bottom Water Valve Replacement

## Steps to Remove Old Water Valve

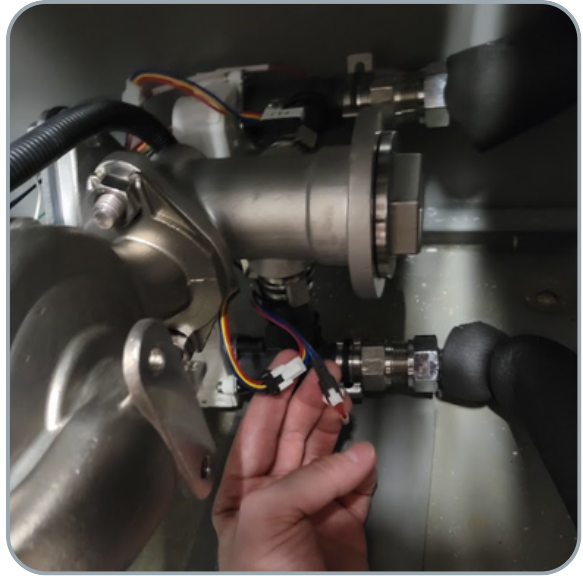
1

Using the 10 mm socket and ratchet open up the bottom 2 doors of the cabinet and locate the bottom water valve



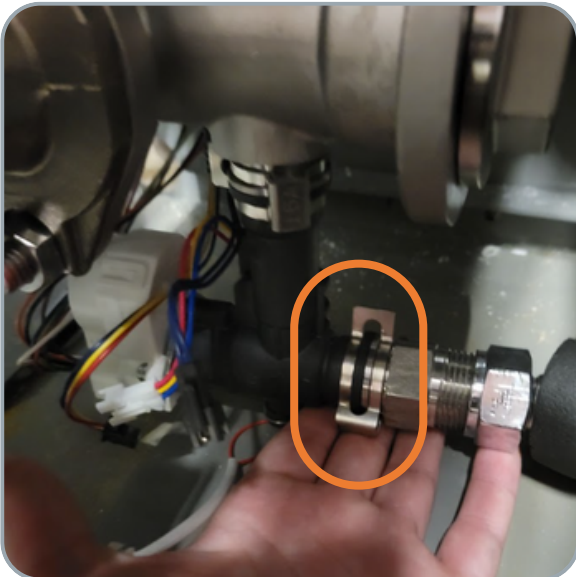
2

Unplug the 3 wire flow sensor harness and the 2 wire inlet temperature sensor harnesses, and move them out of the way.



3

Remove the clip that holds the bottom hex inlet corrugated line and the water valve together. Be prepared with rags as there may be some water left in the lines.



4

Remove the clip that holds the water valve into the bottom of the internal strainer, and remove the water valve.





Intellihot

# Neuron Bottom Water Valve Replacement

## Steps to Remove Old Water Valve

5

Remove the 8 wire harness that connects to the water valve. (Please do not pull on the wires)



# Neuron Bottom Water Valve Replacement

## Steps to Install New Water Valve

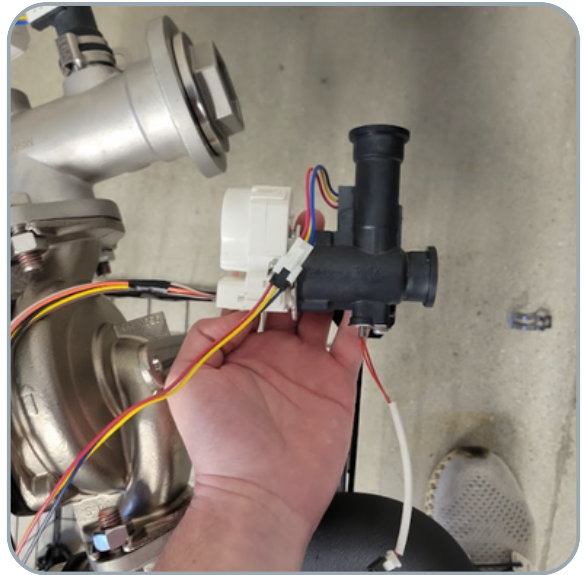
1

Replace the O-Rings on either side of the water valve, use Molykote 111 lubricant to reapply the O-Rings



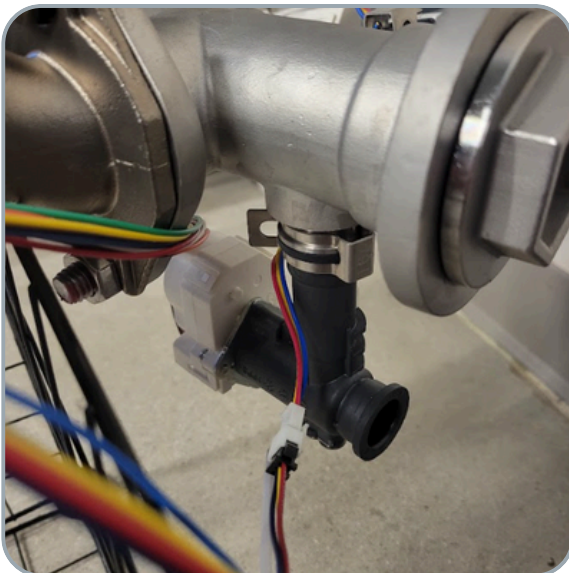
2

Plug the 3 harnesses into the new water valve.



3

Insert the long side of the water valve into the bottom of the inlet strainer and insert the clip to hold them together.



4

Insert the inlet corrugated line for the bottom hex into the water valve and insert the clip to hold them together.

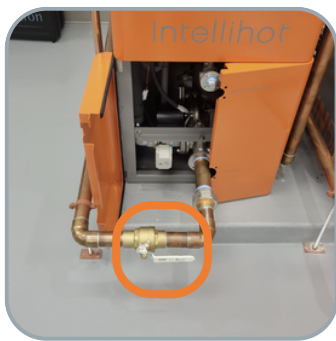


# Neuron Bottom Water Valve Replacement

## Steps to Repressurize the Unit

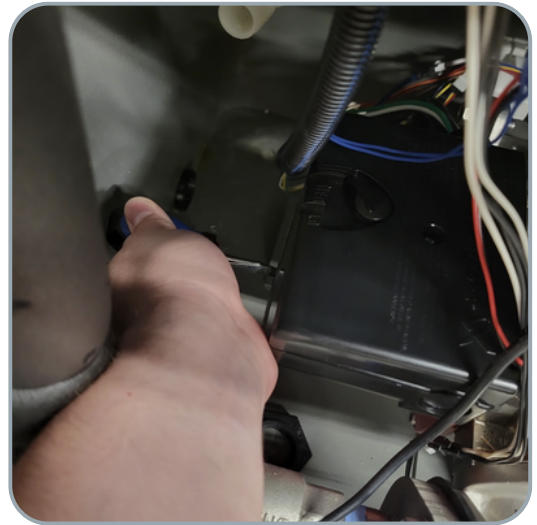
1

Slowly open up the inlet and then the outlet to let the unit fill up with water and pressurize.



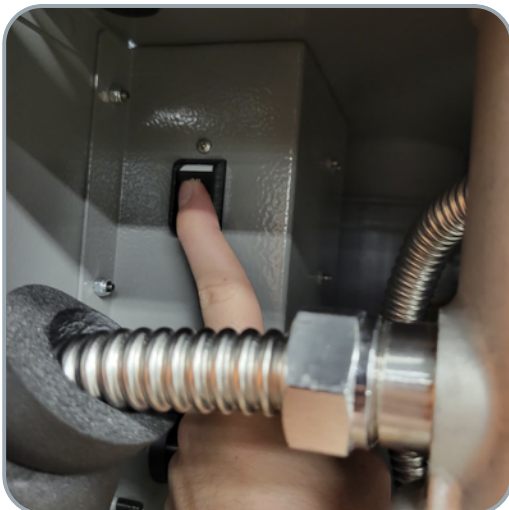
2

Using a stubby flat head screwdriver loosen the bleed screw on the pump about 3 turns, and let any air bleed out of the pump. Be prepared with some rags as water may drip out.



3

You can now reconnect any disconnected wires and power the unit back on.



4

Once the unit is on, and running, after about 30 seconds, close the bleed screw.

