

Double Stack Bottom Water Valve Replacement

Tools Required

Flat Head Screwdriver



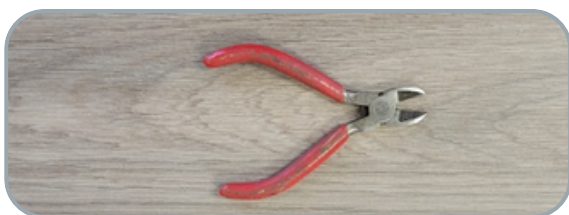
Rags



Small Bucket



Zip Tie Clips

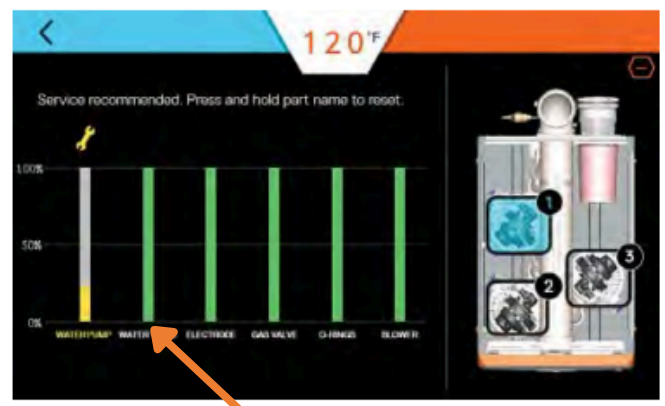


Other Notes

After replacing the Water Valve, reset the Water Valve part life on the display by tapping the top 3 lines, then go to "Life" and press and hold on "Water Valve" and put in code: 0721



Press the (+) button to show the details of the various heat engines.



Double Stack Bottom Water Valve Replacement

Steps to Drain Unit

1

Turn the unit off at both rocker switches, turn the unit back on for about 8 to 10 seconds then turn the unit back off at the rocker switches and power off the breaker feeding the unit.



(This forces open all water valves that can open. This will allow the unit to drain completely.)

2

Isolate the unit by closing off the **inlet** and **outlet** isolation valves.



3

Using the T&P Relief valve, release any excess pressure inside the unit.



4

Unscrew the 3/4" cap on the inlet side of the unit, and attach the garden hose to the open port, and let the water drain out.

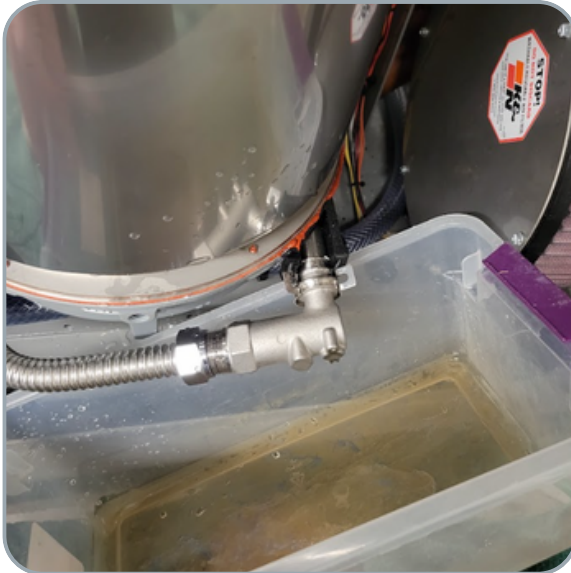


Double Stack Bottom Water Valve Replacement

Steps to Drain Unit

5

With the small bucket underneath the inlet of one of the bottom hexes, remove the clip and pull out the inlet elbow, letting water drain into the bucket



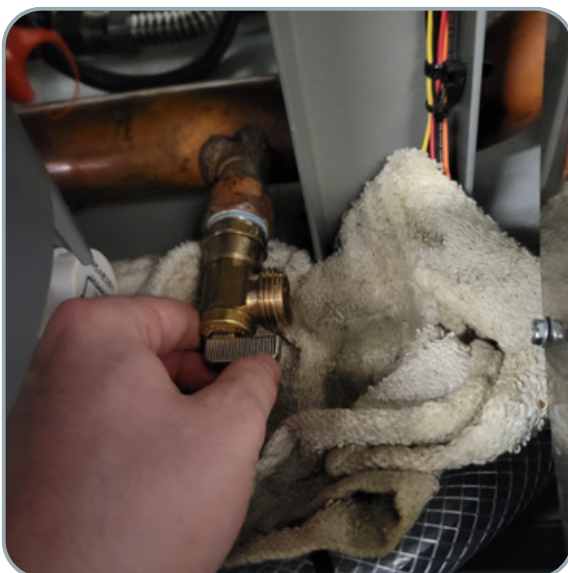
6

You may need to reinsert the elbow, dump out the bucket and repeat step 5, depending on how much water is left and the size of the bucket.



7

Remove the $\frac{3}{4}$ " cap on the drain port at the back right on the bottom manifold, near the air filter. With a rag prepared open up the drain port. You will most likely need to close up the port and grab a dry rag, Repeat this process until there is no water left in the manifold.



8

Using rags, or paper towels, dry off the bottom of the unit, and recap the drain port.

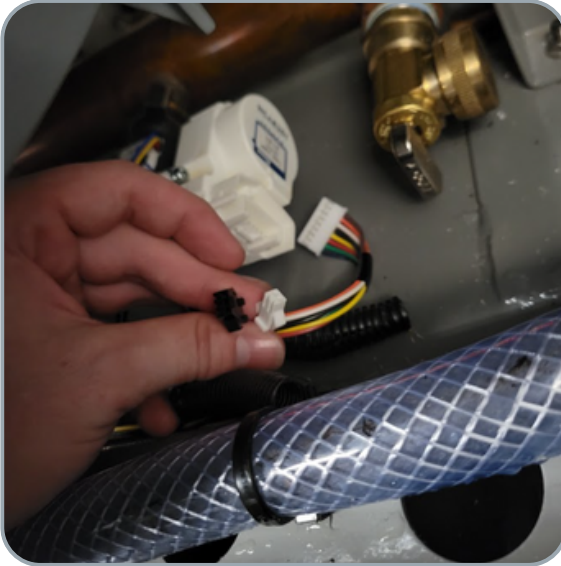


Double Stack Bottom Water Valve Replacement

Steps to Remove Old Water Valve

1

Unplug the 3 wiring harnesses that connect to the water valve at the moxex connectors. (You will need to cut some zip ties and move the plastic looms out of the way.)



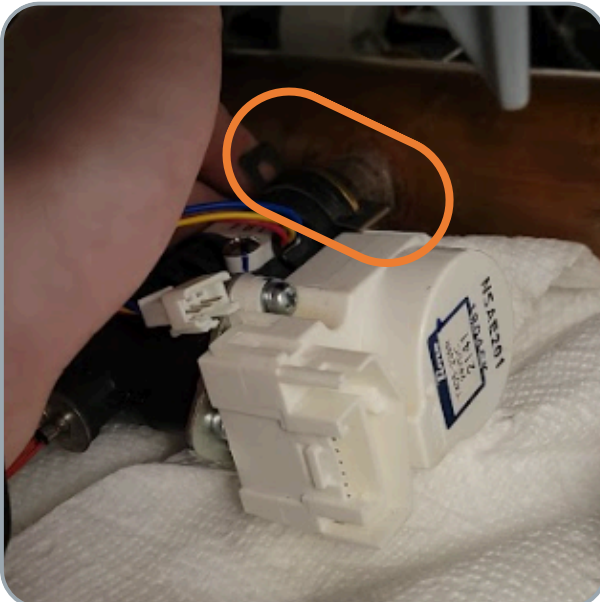
2

Move the 3 wiring harnesses out of the way so if any water comes out when the valve is removed the harnesses do not get wet.



3

Remove the silver clip on the inlet side of the water valve



4

Prepare some towels to soak up any water that is left in the manifold, and remove the valve from the manifold.



Double Stack Bottom Water Valve Replacement

Steps to Remove Old Water Valve

5

Remove the clip that connects the water valve to the inlet corrugated line to the heat exchanger.



6

Remove the water valve.



7

If you replace the O-Rings on either side of the water valve, use Molykote 111 to install the O-Rings.

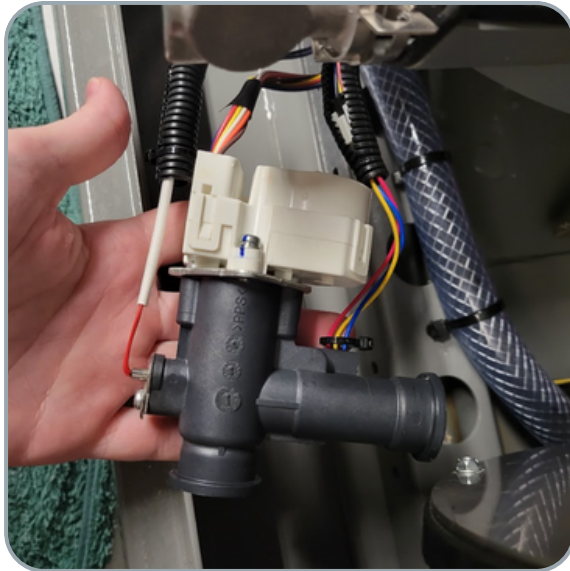


Double Stack Bottom Water Valve Replacement

Steps to Install New Water Valve

1

Install the 3 harnesses into the water valve.



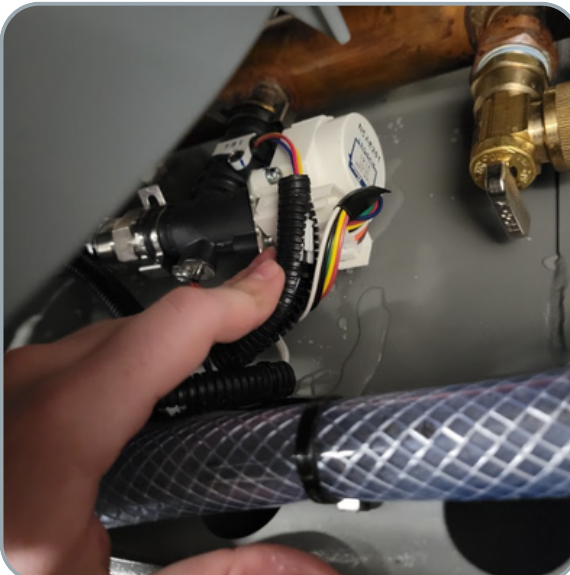
2

Insert the short end of the water valve into the inlet corrugated line and install the clip to hold them together.



3

Insert the long end of the water valve into the manifold and install the clip to hold them together.



4

To ensure that the clips are connected correctly try to spin the clip around and it should spin 360 degrees



Double Stack Bottom Water Valve Replacement

Steps to Pressurize Unit

1

Ensure that the drain port cap is reinstalled with new PTFE tape.



2

Slowly open the **outlet** isolation valve, then slowly open up the **inlet** isolation valve. Then, using the **T&P** Relief valve, release any excess pressure inside the unit.



3

Using a flat head screwdriver loosen the bleed screw on both pumps about 3 turns, and let any air bleed out of the pump. Be prepared with some rags as water may drip out.



4

open up a faucet and let it run for about 2 to 3 minutes and then turn on the unit at the rocker switches. Then close the bleed screw on both pumps.

