



Intellihot

**THANK
YOU**

FOR YOUR ORDER

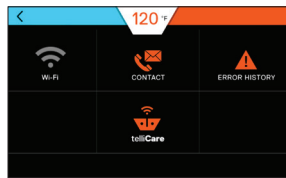
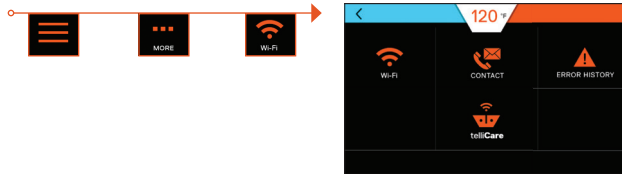
NOTICE: Seller's warranty shall be void and of no effect if:

1. Licensed contractor is not used to install products.
2. Buyer uses the products in a manner not intended by Seller or in a manner not disclosed by Buyer; or
3. The breach resulted from the actions or omissions by another party or misuse of the products. For further questions or assistance feel free to reach out to our Customer Support team at: 877-835-1705

TROUBLESHOOTING

1. Check the Wi-Fi connection

- Navigate to the Wi-Fi page to ensure Wi-Fi module is detected by pressing on the Wi-Fi symbol on the following screen.



In the case of no Wi-Fi connection, the Wi-Fi icon in following screen will be shown as grey out. Check to make sure the Wi-Fi module is fully seated and wait for up to 10 minutes to recheck Wi-Fi status.

- Verify the telliWeb-xxxx (4-digit numeric numbers) SSID is broadcasted by using your cell phone.
- Please contact Tech Support if the telliWeb-xxxx cannot be found or the Wi-Fi module is not connected.

2. There is no cellular signal in the room.

- Check the Hotspot Router antenna connection.
- Check the blue cellular signal bar on the Hotspot Router for the cellular signal strength or move the Hotspot Router to a different location for a better cellular reception.



INSTRUCTIONS

telliCare Connectivity Kit Installation Guide

FOR INTELLIHOT GEN II WATER HEATERS

WALL HUNG i200 | i250 | iQ251 | iQ251D

FLOOR STANDING iQ751 | iQ1001 | iQ1501 | iQ2001 | iQ3001

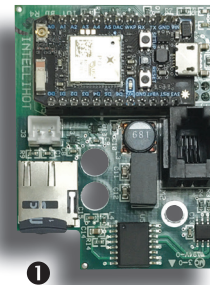
Kit Part # Green Control Board:
IGT-SPR0200 (US) or IGT-SPR0201 (CAN)

White Control Board: IGT-SPR0223 (US)
or IGT-SPR0224 (CAN)

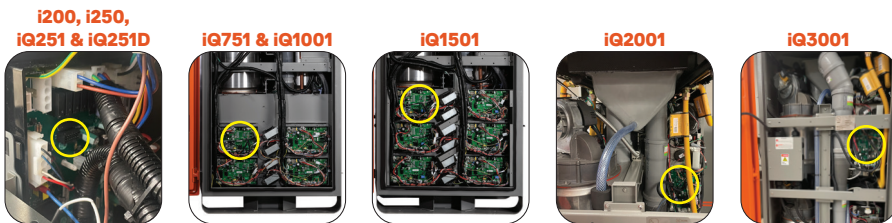


Kit Contents:

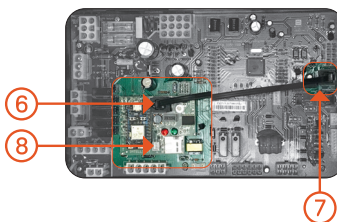
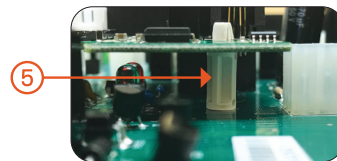
- 1 Wi-Fi Module
- 2 Communication Cable
- 3 Hotspot Router
- 4 Hot Spot Power Supply
- 5 Wi-Fi & Cellular Antennas



1. Shut off the water and gas to the water heater.
2. Open the front door and turn off the power switch.
3. For cascaded heaters, install the Wi-Fi Module on the first heater in the bank of installed heaters.
4. Install the Wi-Fi Module on the top left control electronics on iQ751/iQ1001 and iQ1501 or the control electronics marked in the yellow circles below.



5. The plastic standoff and the 14-pin connector snap onto the control electronics.
6. Plug in supplied communication cable onto the Wi-Fi Module.
7. Plug in the communication cable onto the jack at the right of the control electronics.
8. Plug in the two-pin connector onto the Wi-Fi module from the display harness.



9. Connect the two cellular antennas to the router.
10. Connect the Wi-Fi antenna to the router.



11. Identify a location where a cellular signal would be strong (near a window, closer to the outside wall within the mechanical room where equipment is installed).
12. Plug in 4-pin power connector of the Hotspot Power Supply to the Hotspot router and the Hotspot Power Supply to an outlet.
13. Check on the Hot Spot Router for the signal strength as shown to the right in blue bars, if there is one bar or less identify another location. Make sure both Wi-Fi and Cellular status LEDs are all green. The Hot Spot Router may take up to 30 minutes to establish a cloud connection.
14. Open the water and gas valves.
15. Turn on the power switch in the cabinet for the water heater.
16. The Wi-Fi Module will automatically detect and connect to the Hot Spot Router. On the touch screen display the Wi-Fi symbol will indicate a successful connection.

