



Intellihot

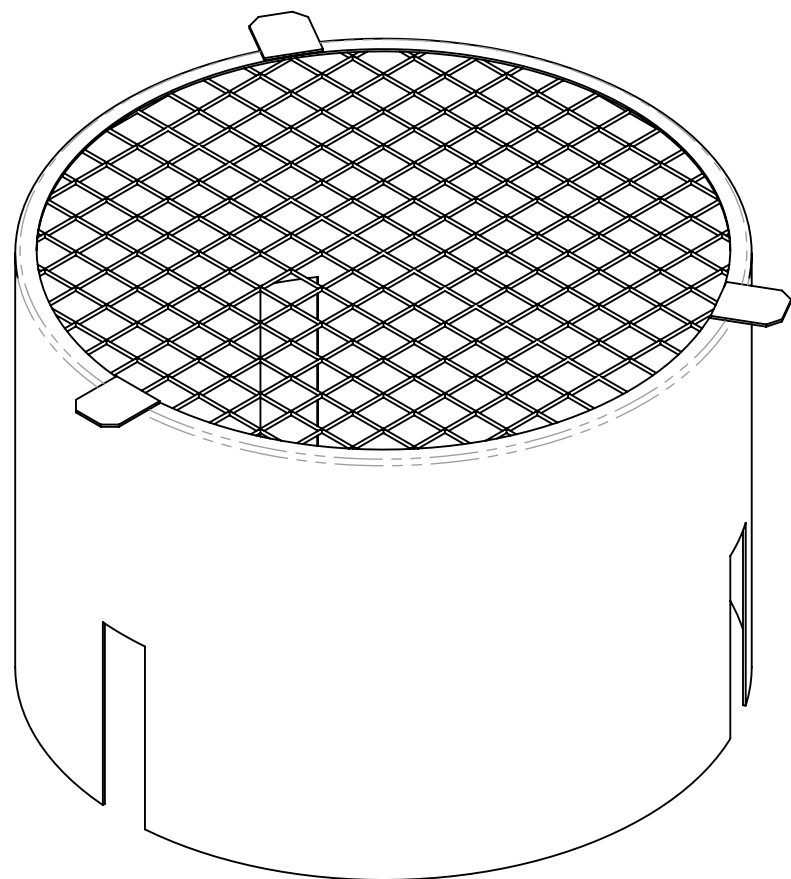
**THANK
YOU**

FOR YOUR ORDER

NOTICE: Seller's warranty shall be void and of no effect if:

1. Licensed contractor is not used to install products.
2. Buyer uses the products in a manner not intended by Seller or in a manner not disclosed by Buyer; or
3. The breach resulted from the actions or omissions by another party or misuse of the products. For further questions or assistance feel free to reach out to our Customer Support team at: 877-835-1705

KIT COMPONENTS

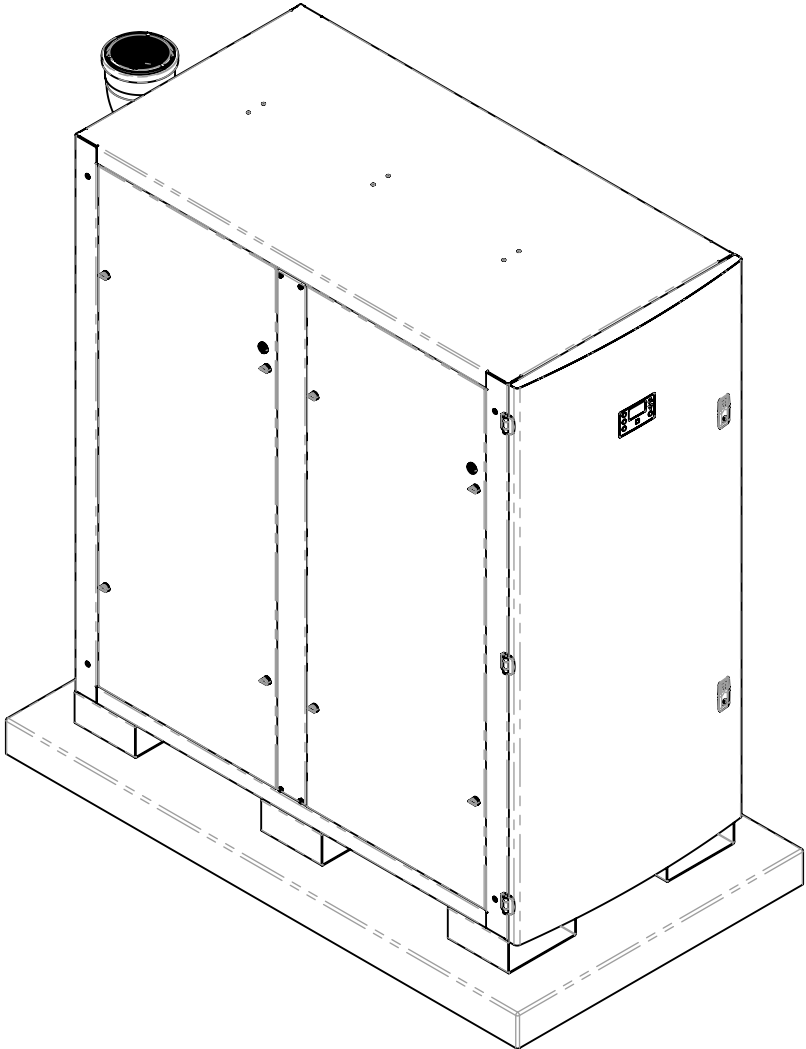


**BIRD SCREEN
(2 EA. INCLUDED)
SCALE 1 : 1.5**

intelli**hot™**

Outdoor Kit Installation

Kit #: IGT-SPR0064

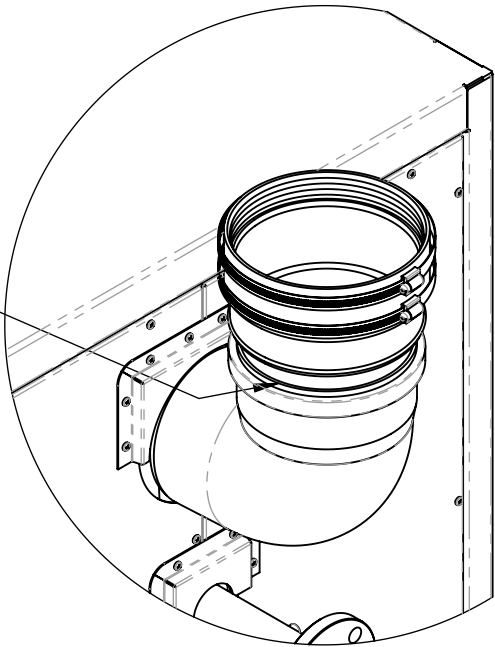


Applicable Models iQ751/iQ1001/iQ1501

Caution: Installation Instructions should be followed precisely to maintain warranty.

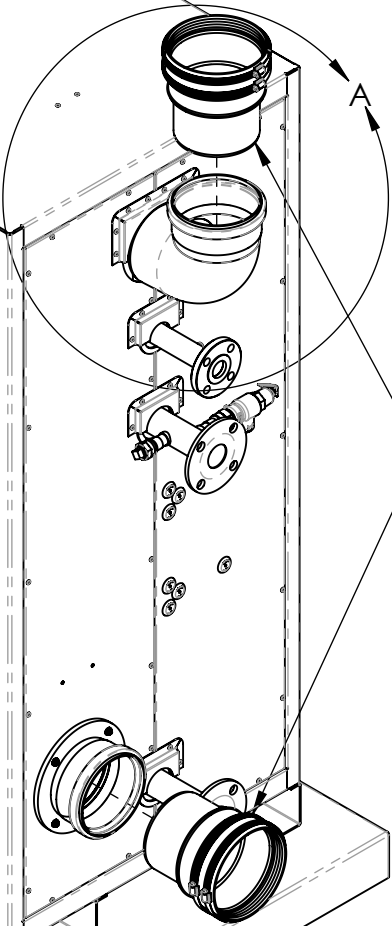
Note: Model shown is iQ1501

① ROTATE ADAPTERS UNTIL FREE. DUCT ADAPTERS ARE DESIGNED TO FIT SNUGLY. USE WATER OR A WATER BASED SILICON LUBRICANT IN JOINT TO HELP WITH ADAPTER DISASSEMBLY.



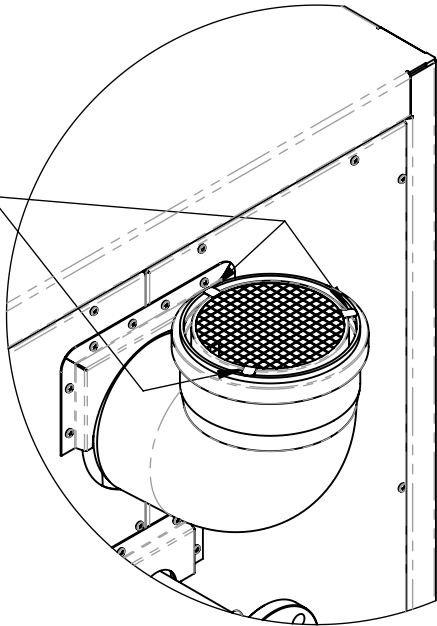
DETAIL A

② REMOVE BOTH DUCT ADAPTERS AS SHOWN



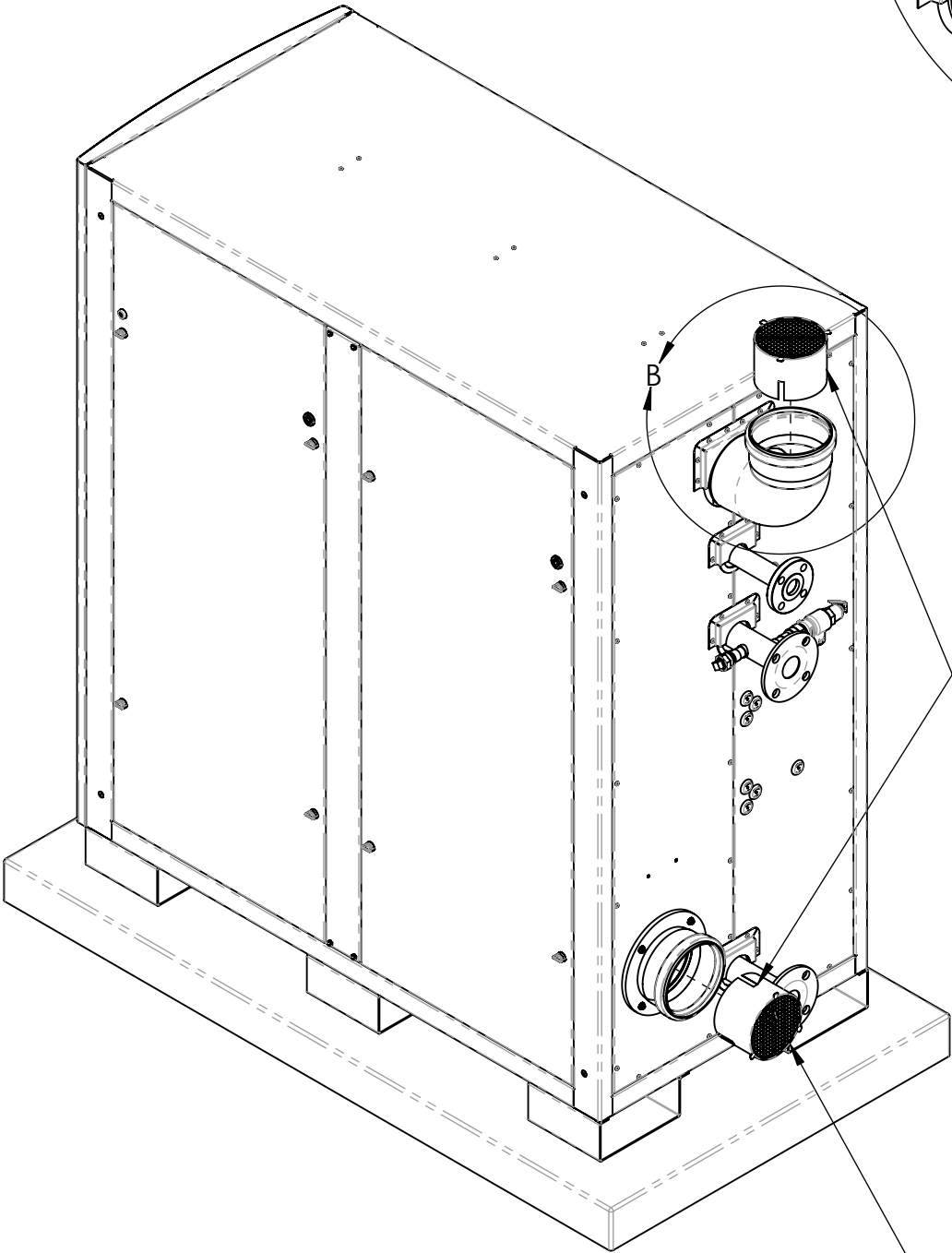
UNIT SHOULD BE ON A CONCRETE PAD 4" THICK MINIMUM & 4" EXTENDING PAST EACH OF 4 SIDES.

④ INSTALL SUPPLIED BIRDSCREEN INTO DUCT UNTIL TABS CONTACT THE RIM AS SHOWN ON UPPER AND LOWER DUCTS.



DETAIL B

③ POSITION BIRD SCREENS AS SHOWN



CAUTION: ENSURE AIR INTAKE IS FREE FROM GRASS CLIPPINGS / WOOD / DEBRIS AND MUST BE HIGHER THAN SNOWLINE.