



Intellihot

**THANK  
YOU**

FOR YOUR ORDER

***NOTICE: Seller's warranty shall be void and of no effect if:***

1. Licensed contractor is not used to install products.
2. Buyer uses the products in a manner not intended by Seller or in a manner not disclosed by Buyer; or
3. The breach resulted from the actions or omissions by another party or misuse of the products. For further questions or assistance feel free to reach out to our Customer Support team at: 877-835-1705

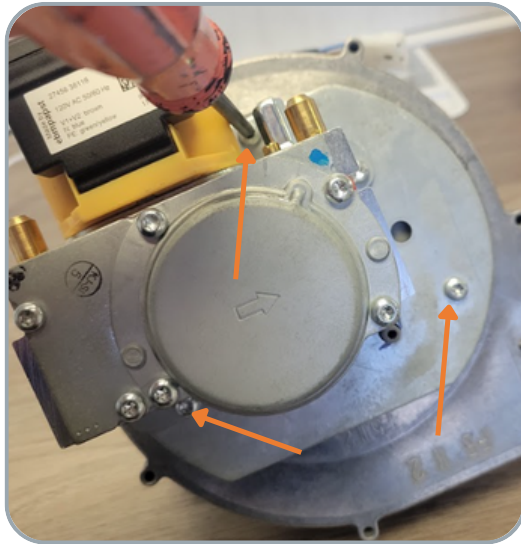
# Blower Style D & E Adapter Plate

**Note: The adapter plate is not required when installing on an iQ2001 or an iQ3001**

**Note: If the adapter plate is not installed or incorrectly installed, the unit will not operate as designed**

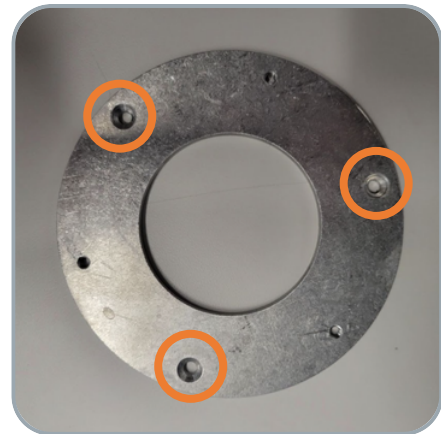
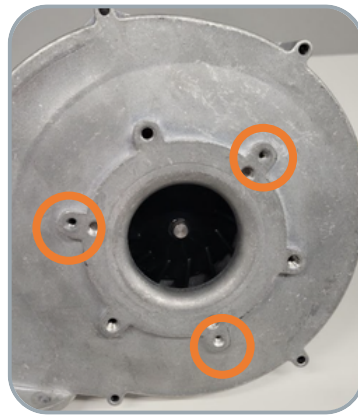
1

Using the TORX T20 head screw driver, remove the 3 screws that hold the gas valve to the blower, and remove the gas valve and swirl plate from the blower.



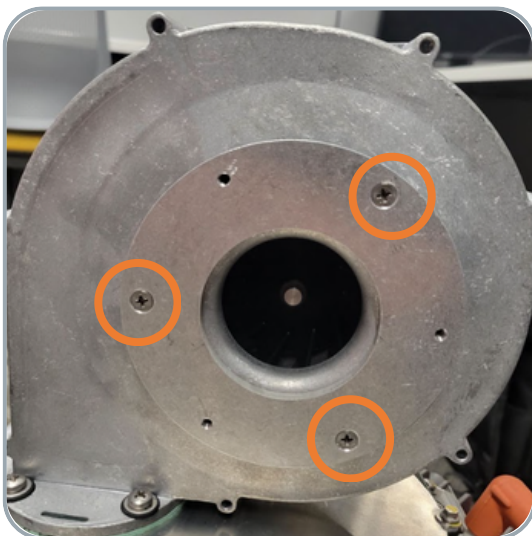
2

Line the 3 holes that are circled on the adapter plate to the 3 holes circled on the blower



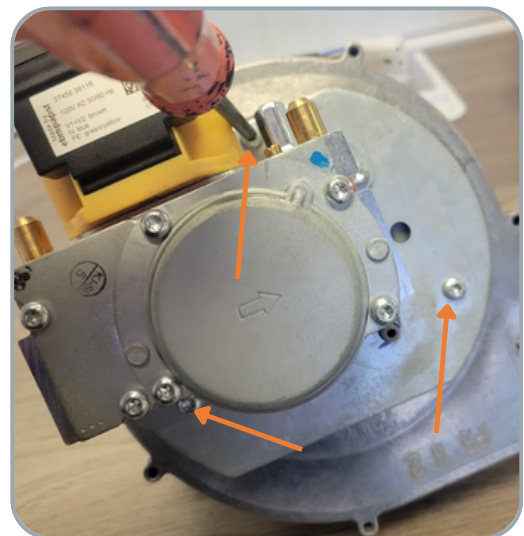
3

Install the 3 screws that hold the adapter plate to the blower so that they are flush with the adapter plate



4

Using the TORX T20 head screw driver, install the 3 screws that hold the gas valve and swirl play to the blower, into the 3 open holes on the adapter plate



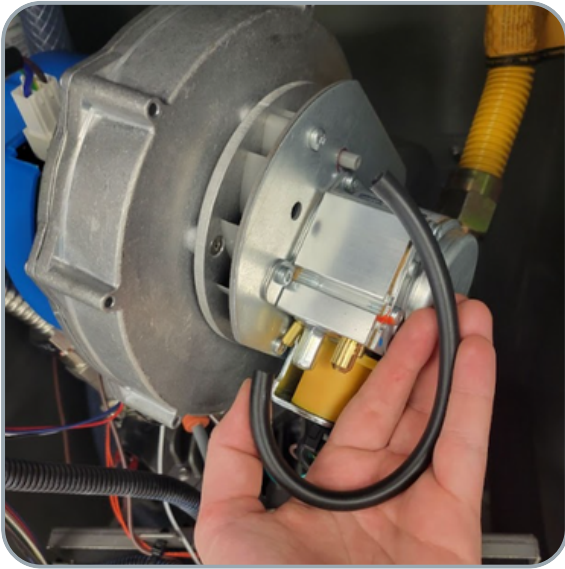
# Blower Style D & E Adapter Plate

## Combustion Tuning

**Note: If you are replacing a different style of blower with the Type E blower, please follow the instructions below**

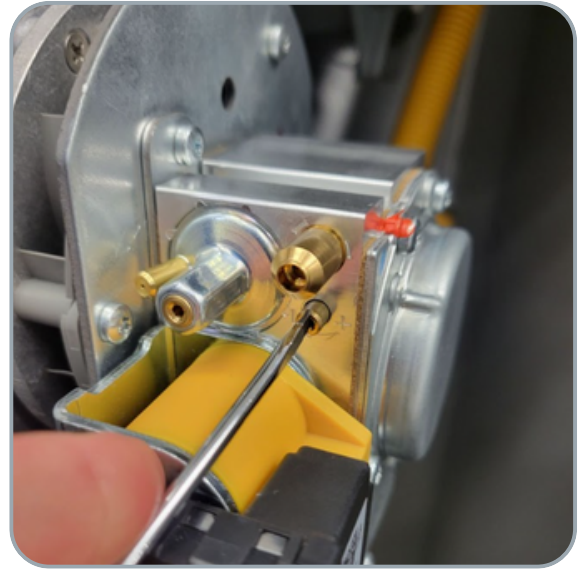
1

Remove the black tube that is connected to the gas valve.



2

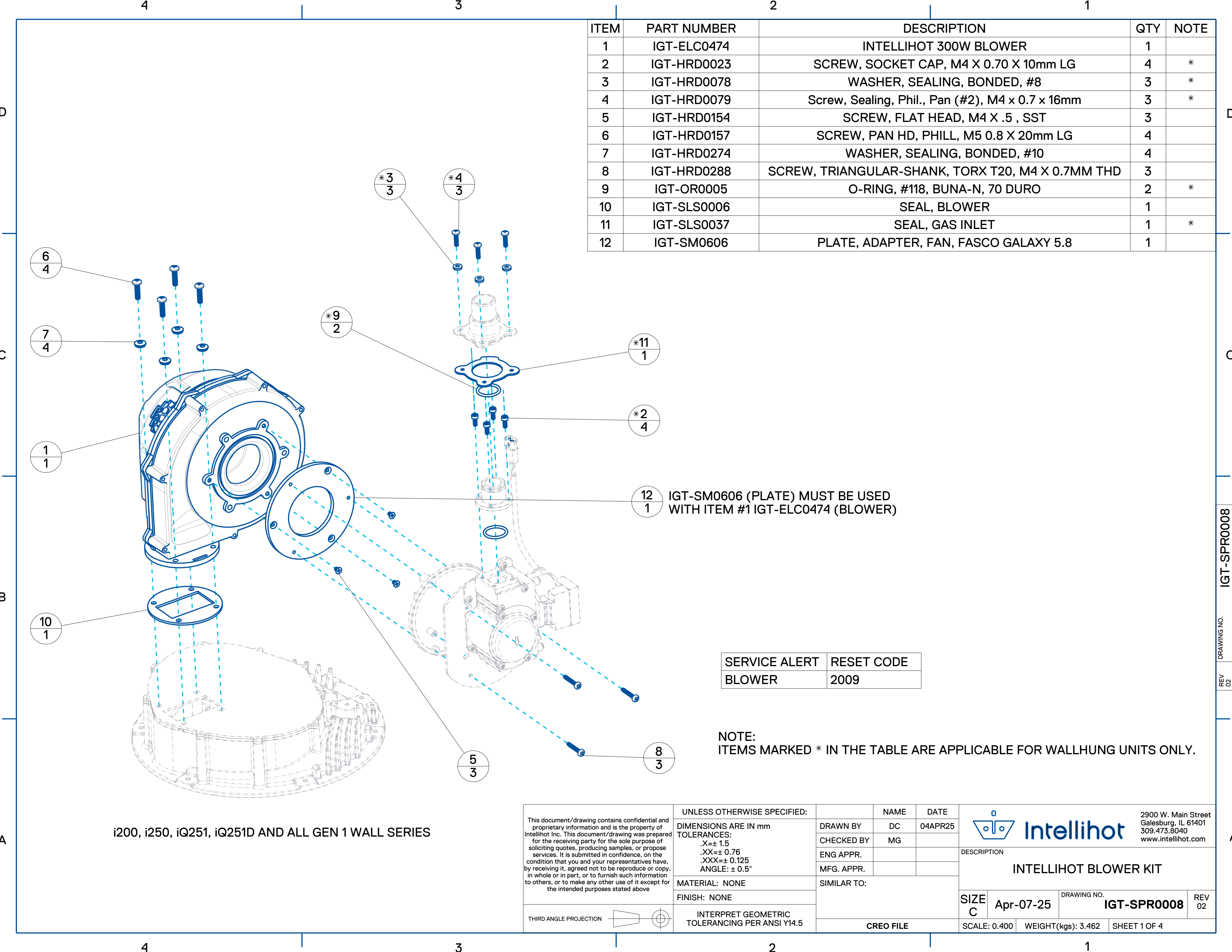
Make approximately 2 turns on the high fire screw towards the plus sign.



**Note: If you are still experiencing combustion rumbling keep increasing the high fire screw by  $\frac{1}{4}$  turn at a time until the combustion rumbling subsides.**

**Note: This process is to get the unit up and running, however, you will need to combustion tune with an analyzer to ensure tuning is properly within range**





ITEM	PART NUMBER	DESCRIPTION	QTY	NOTE
1	IGT-ELC0474	INTELLIHOT 300W BLOWER	1	
2	IGT-HRD0023	SCREW, SOCKET CAP, M4 X 0.70 X 10mm LG	4	*
3	IGT-HRD0078	WASHER, SEALING, BONDED, #8	3	*
4	IGT-HRD0079	Screw, Sealing, Phil., Pan (#2), M4 x 0.7 x 16mm	3	*
5	IGT-HRD0154	SCREW, FLAT HEAD, M4 X .5 , SST	3	
6	IGT-HRD0157	SCREW, PAN HD, PHILL, M5 0.8 X 20mm LG	4	
7	IGT-HRD0274	WASHER, SEALING, BONDED, #10	4	
8	IGT-HRD0288	SCREW, TRIANGULAR-SHANK, TORX T20, M4 X 0.7MM THD	3	
9	IGT-OR0005	O-RING, #118, BUNA-N, 70 DURO	2	*
10	IGT-SLS0006	SEAL, BLOWER	1	
11	IGT-SLS0037	SEAL, GAS INLET	1	*
12	IGT-SM0606	PLATE, ADAPTER, FAN, FASCO GALAXY 5.8	1	

12 1 IGT-SM0606 (PLATE) MUST BE USED WITH ITEM #1 IGT-ELC0474 (BLOWER)

SERVICE ALERT	RESET CODE
BLOWER	2009

NOTE:  
ITEMS MARKED \* IN THE TABLE ARE APPLICABLE FOR WALLHUNG UNITS ONLY.

i200, i250, iQ251, iQ251D AND ALL GEN 1 WALL SERIES

This document/drawing contains confidential and proprietary information and is the property of Intellihot Inc. This document/drawing was prepared for the receiving party for the sole purpose of soliciting quotes, producing samples, or propose services. It is submitted in confidence, on the condition that you and your representatives have, by receiving it, agreed not to be reproduce or copy, in whole or in part, or to furnish such information to others, or to make any other use of it except for the intended purposes stated above

THIRD ANGLE PROJECTION

UNLESS OTHERWISE SPECIFIED:

DIMENSIONS ARE IN mm

TOLERANCES:

.X=± 1.5

.XX=± 0.76

.XXX=± 0.125

ANGLE: ± 0.5°

MATERIAL: NONE

FINISH: NONE

INTERPRET GEOMETRIC TOLERANCING PER ANSI Y14.5

DRAWN BY	DC	DATE	04APR25
CHECKED BY	MG		
ENG APPR.			
MFG. APPR.			
SIMILAR TO:			
CREO FILE			

2900 W. Main Street  
Galesburg, IL 61401  
309.473.8040  
www.intellihot.com

DESCRIPTION

INTELLIHOT BLOWER KIT

SIZE	Apr-07-25	DRAWING NO.	IGT-SPR0008	REV	02
C					

SCALE: 0.400

WEIGHT(kgs): 3.462

SHEET 1 OF 4

4

3

2

1

D

D

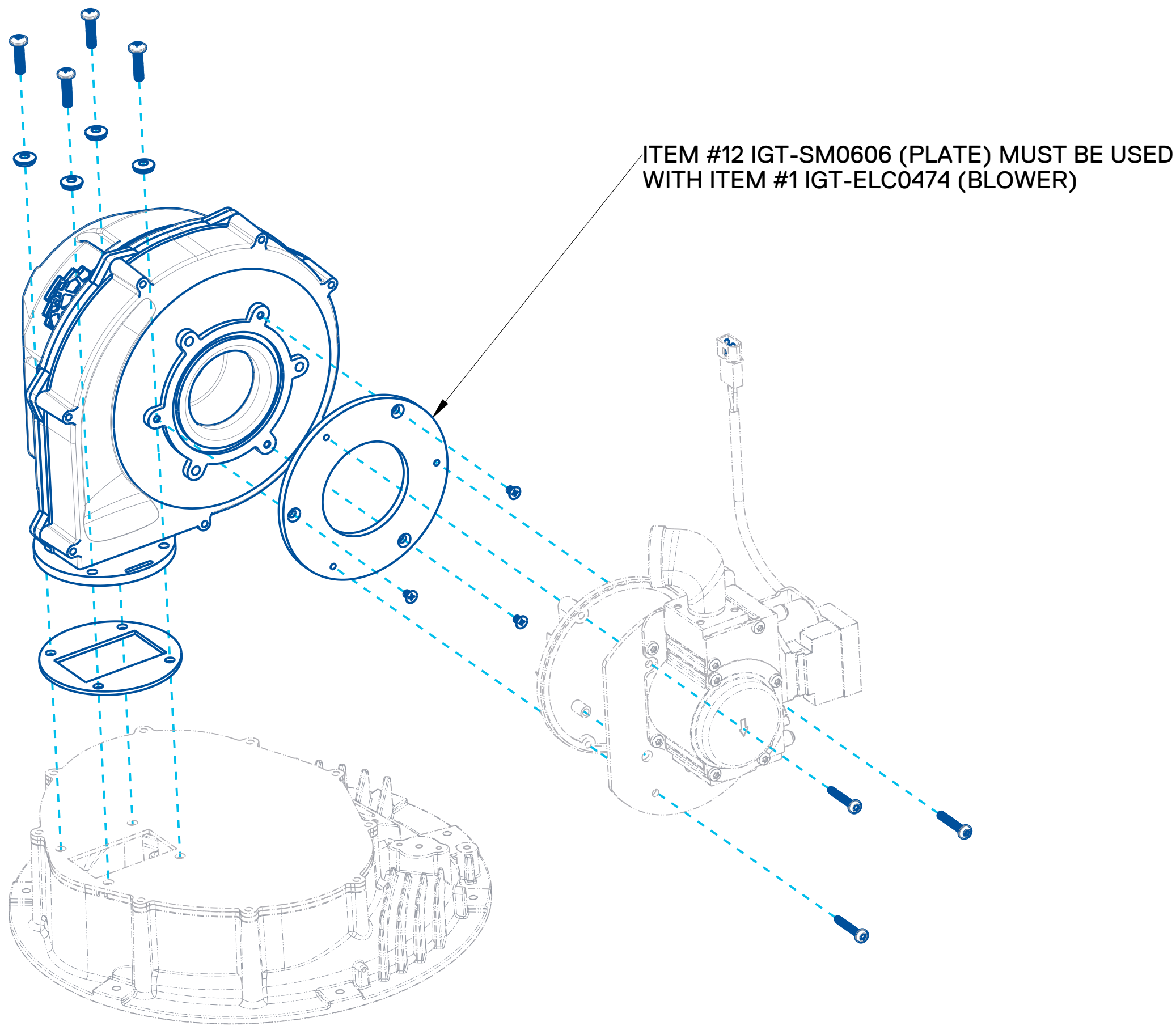
C

C

B

A

A



iN199, iN199A, iN251, iQ751, iQ1001 AND iQ1501

This document/drawing contains confidential and proprietary information and is the property of Intellihot Inc. This document/drawing was prepared for the receiving party for the sole purpose of soliciting quotes, producing samples, or propose services. It is submitted in confidence, on the condition that you and your representatives have, by receiving it, agreed not to be reproduce or copy, in whole or in part, or to furnish such information to others, or to make any other use of it except for the intended purposes stated above




UNLESS OTHERWISE SPECIFIED:

DIMENSIONS ARE IN mm  
TOLERANCES:  
.X=± 1.5  
.XX=± 0.76  
.XXX=± 0.125  
ANGLE: ± 0.5°

MATERIAL: NONE  
FINISH: NONE

INTERPRET GEOMETRIC  
TOLERANCING PER ANSI Y14.5

	NAME	DATE
DRAWN BY	DC	04APR25
CHECKED BY	MG	
ENG APPR.		
MFG. APPR.		
SIMILAR TO:		
CREO FILE		

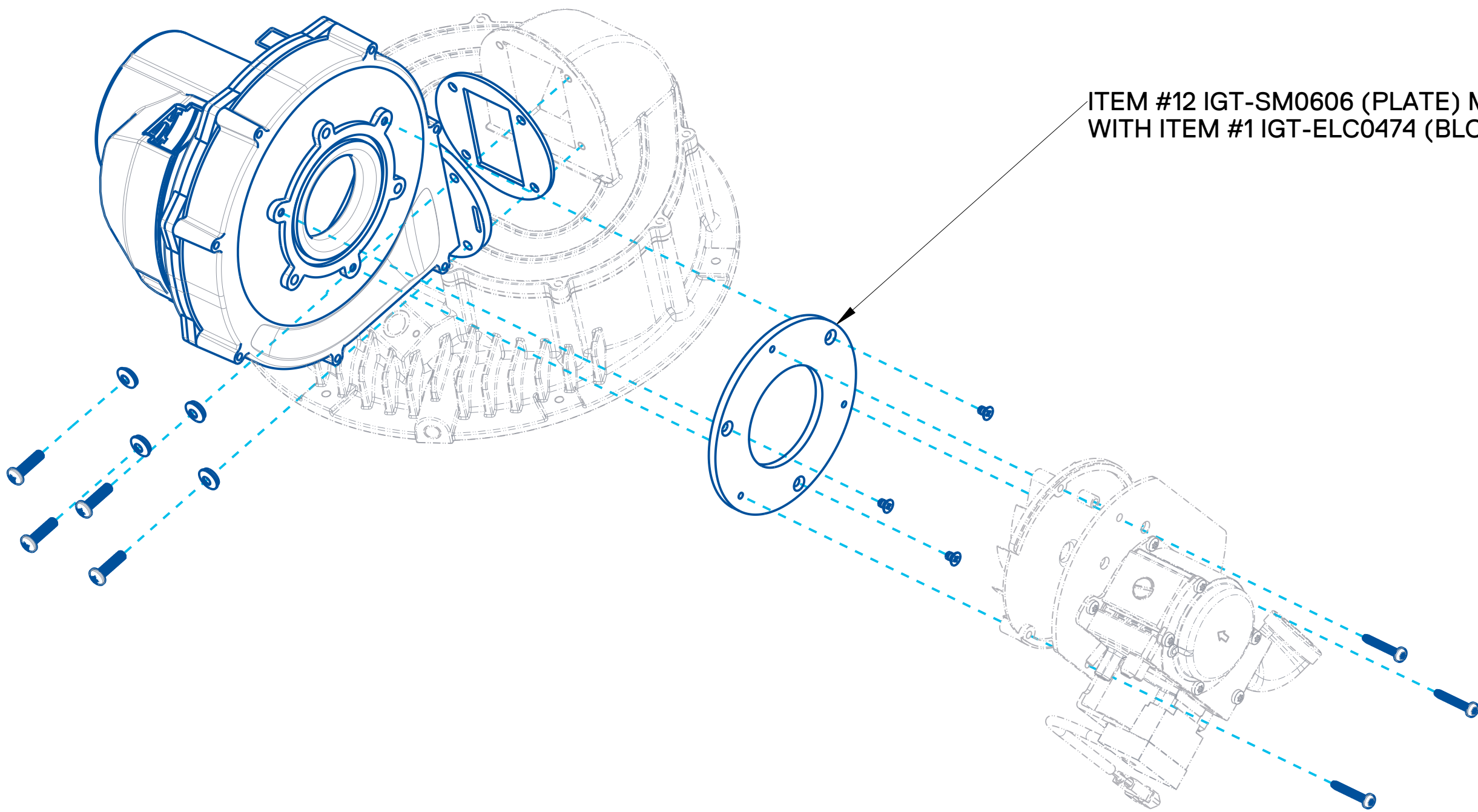
		2900 W. Main Street Galesburg, IL 61401 309.473.8040 www.intellihot.com	
DESCRIPTION			
INTELLIHOT BLOWER KIT			
SIZE C	Apr-07-25	DRAWING NO. <b>IGT-SPR0008</b>	REV 02
SCALE: 0.400	WEIGHT(kgs): 3.462	SHEET 2 OF 4	

IGT-SPR0008

DRAWING NO.

REV

01



iN401/iN501

This document/drawing contains confidential and proprietary information and is the property of Intellihot Inc. This document/drawing was prepared for the receiving party for the sole purpose of soliciting quotes, producing samples, or propose services. It is submitted in confidence, on the condition that you and your representatives have, by receiving it, agreed not to be reproduce or copy, in whole or in part, or to furnish such information to others, or to make any other use of it except for the intended purposes stated above



UNLESS OTHERWISE SPECIFIED:

DIMENSIONS ARE IN mm  
TOLERANCES:  
.X=± 1.5  
.XX=± 0.76  
.XXX=± 0.125  
ANGLE: ± 0.5°

MATERIAL: NONE  
FINISH: NONE

INTERPRET GEOMETRIC  
TOLERANCING PER ANSI Y14.5

	NAME	DATE
DRAWN BY	DC	04APR25
CHECKED BY	MG	
ENG APPR.		
MFG. APPR.		

SIMILAR TO:

CREO FILE



2900 W. Main Street  
Galesburg, IL 61401  
309.473.8040  
www.intellihot.com

DESCRIPTION  
INTELLIHOT BLOWER KIT

SIZE C  
Apr-07-25  
DRAWING NO. IGT-SPR0008  
REV 02

SCALE: 0.400  
WEIGHT(kgs): 3.462  
SHEET 3 OF 4

IGT-SPR0008

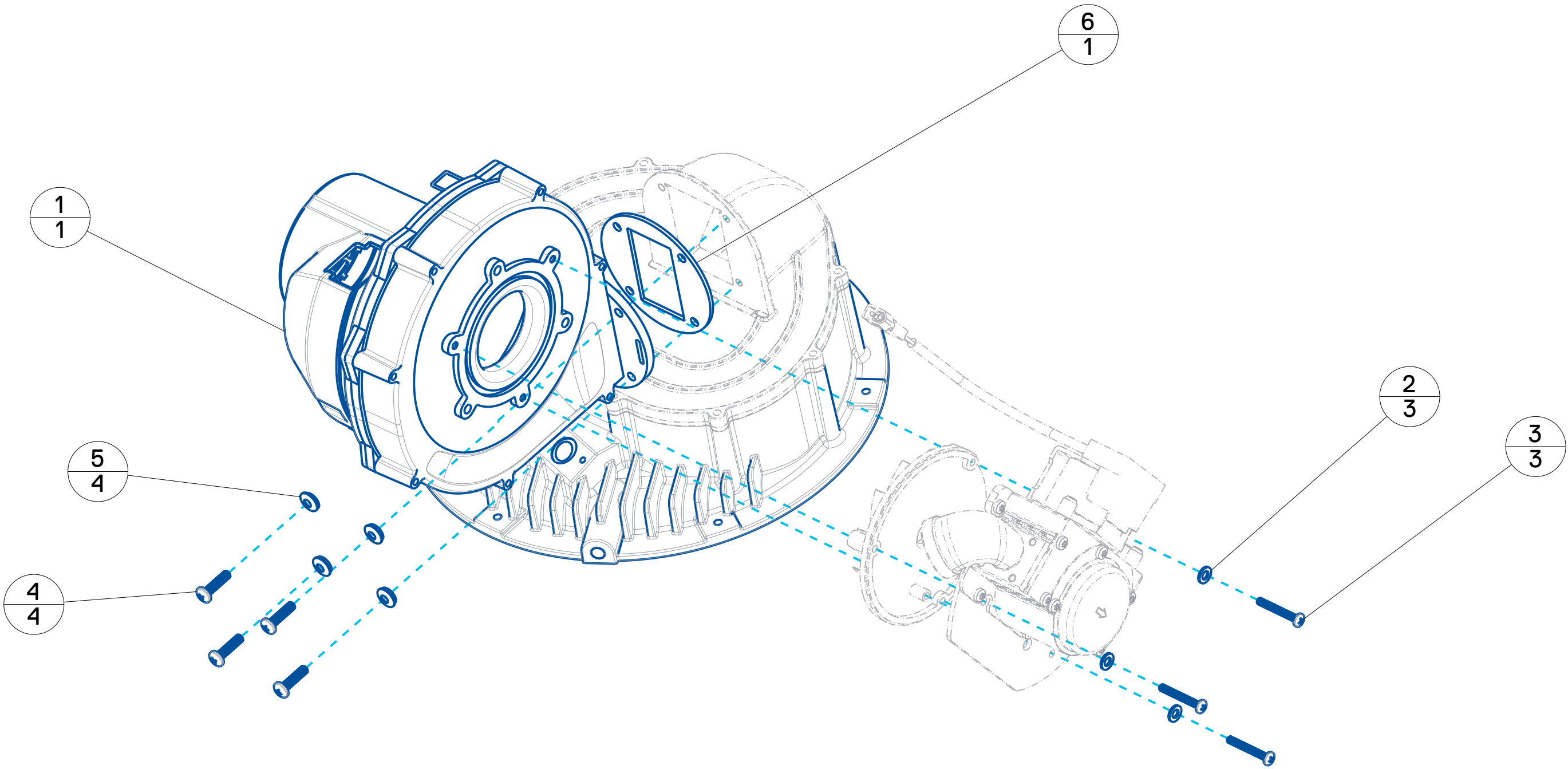
DRAWING NO.

REV 01

A



ITEM	PART NUMBER	DESCRIPTION	QTY	NOTE
1	IGT-ELC0474	INTELLIHOT 300W BLOWER	1	
2	IGT-HRD0008	WASHER, FLAT, M5	3	
3	IGT-HRD0098	SCREW, PAN HD, PHILL, M4 X 0.70 X 30mm LG	3	
4	IGT-HRD0157	SCREW, PAN HD, PHILL, M5 0.8 X 20mm LG	4	
5	IGT-HRD0274	WASHER, SEALING, BONDED, #10	4	
6	IGT-SLS0006	SEAL, BLOWER	1	



iQ2001/iQ3001

This document/drawing contains confidential and proprietary information and is the property of Intellihot Inc. This document/drawing was prepared for the receiving party for the sole purpose of soliciting quotes, producing samples, or propose services. It is submitted in confidence, on the condition that you and your representatives have, by receiving it, agreed not to be reproduce or copy, in whole or in part, or to furnish such information to others, or to make any other use of it except for the intended purposes stated above

THIRD ANGLE PROJECTION

UNLESS OTHERWISE SPECIFIED:

DIMENSIONS ARE IN mm

TOLERANCES:

.X=± 1.5

.XX=± 0.76

.XXX=± 0.125


ANGLE: ± 0.5°

MATERIAL: NONE

FINISH: NONE

INTERPRET GEOMETRIC TOLERANCING PER ANSI Y14.5

DRAWN BY	DC	DATE	04APR25
CHECKED BY	MG		
ENG APPR.			
MFG. APPR.			
SIMILAR TO:			
CREO FILE			



**Intellihot**

2900 W. Main Street  
Galesburg, IL 61401  
309.473.8040  
www.intellihot.com

DESCRIPTION

**INTELLIHOT BLOWER KIT**

SIZE C	Apr-07-25	DRAWING NO. <b>IGT-SPR0008</b>	REV 02
SCALE: 0.400	WEIGHT(kgs): 3.462	SHEET 4 OF 4	