



Intellihot

**THANK
YOU**

FOR YOUR ORDER

NOTICE: Seller's warranty shall be void and of no effect if:

1. Licensed contractor is not used to install products.
2. Buyer uses the products in a manner not intended by Seller or in a manner not disclosed by Buyer; or
3. The breach resulted from the actions or omissions by another party or misuse of the products. For further questions or assistance feel free to reach out to our Customer Support team at: 877-835-1705



July 22nd, 2024
Bulletin#: TB2024-04

Technical Bulletin regarding Gas Valve Screw update

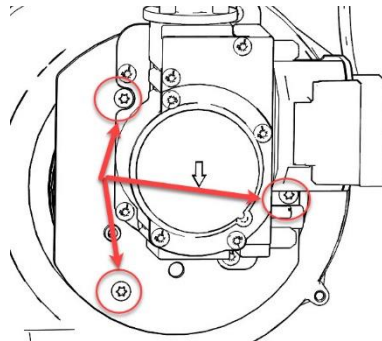
Models: All Gas Products Models

Description:

We are switching the IGT-HRD0038 (SCREW, PAN HD, TRIANGULAR-SHANK, TORX T20) used with the Gas valve to Blower mounting to a new supplier. The new part number is IGT-HRD0288 (SCREW, PAN HD, TRIANGULAR-SHANK, TORX T20). The new part is identical replacement.

When replacing the gas valve or blower

Please discard the previously installed HRD0038 (3 places as shown below). Please use the newly supplied IGT-HRD0288 screws.



Failure to perform the above change could cause gas leaks. A gas leak check is always required when a gas valve or blower is replaced.

To contact Intellihot product support, please call us at 1-866-692-6791 or email us at support@intellihot.com

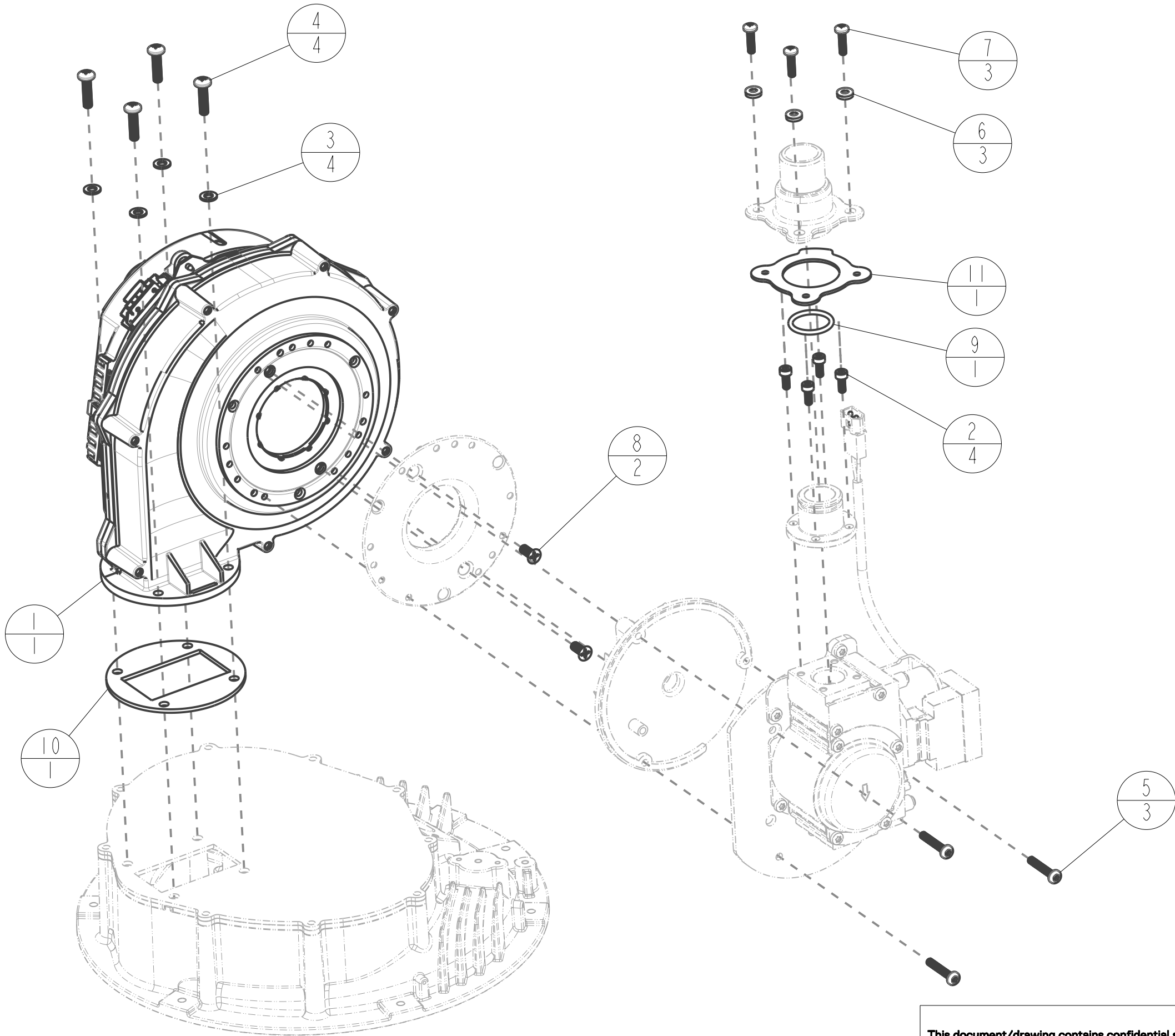
4

3

2

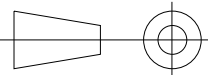
1

ITEM	PART NUMBER	DESCRIPTION	MATERIAL	QTY
1	IGT-ELC0008S	BLOWER, 300W 120VAC, 60Hz, SEALED VERSION	N/A	1
2	IGT-HRD0023	SCREW, SOCKET CAP, M4 X 0.70 X 10mm LG		4
3	IGT-HRD0008	WASHER, FLAT, M5	8-18 SST	4
4	IGT-HRD0157	SCREW, PAN HD, PHILL, M5 0.8 X 20mm LG		4
5	IGT-HRD0038	SCREW, PAN HD, TRIANULAR-SHANK, TORX T20 # 8-16 X 1.00 LG	STEEL	3
6	IGT-HRD0078	WASHER, SEALING, BONDED, #8	SST/EPDM	3
7	IGT-HRD0079	Screw, Sealing, Phil., Pan (#2), M4 x 0.7 x 16mm		3
8	IGT-HRD0011	SCREW, FLAT HD, PHILL, M5 0.8 X 12mm LG	8-18 SST	2
9	IGT-OR0005	O-RING, #118, BUNA-N, 70 DURO		1
10	IGT-SLS0006	SEAL, BLOWER	DX SEAL, DX660	1
11	IGT-SLS0037	SEAL, GAS INLET		1



This document/drawing contains confidential and proprietary information and is the property of Intellihot Inc. This document/drawing was prepared for the receiving party for the sole purpose of soliciting quotes, producing samples, or propose services. It is submitted in confidence, on the condition that you and your representatives have, by receiving it, agreed not to be reproduce or copy, in whole or in part, or to furnish such information to others, or to make any other use of it except for the intended purposes stated above

THIRD ANGLE PROJECTION



UNLESS OTHERWISE SPECIFIED:

DIMENSIONS ARE IN mm
TOLERANCES:

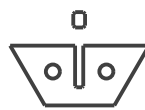
.X=± 1.5
.XX=± 0.76
.XXX=± 0.125
ANGLE: ± 0.5°

MATERIAL: NONE

FINISH: NONE

INTERPRET GEOMETRIC
TOLERANCING PER ANSI Y14.5

NAME	DATE
DRAWN BY NVM	06/20/23
CHECKED BY	
ENG APPR.	
MFG. APPR.	
SIMILAR TO:	
CREO FILE	



Intellihot

2900 W. Main Street
Galesburg, IL 61401
309.473.8040
www.intellihot.com

DESCRIPTION

BLOWER KIT

SIZE
C

Jun-21-23

DRAWING NO.

IGT-SPR0008

REV
01

SCALE: 0.400

WEIGHT(kgs): 3.462

SHEET 1 OF 1

4

3

2

1

IGT-SPR0008

DRAWING NO.

REV
01

A