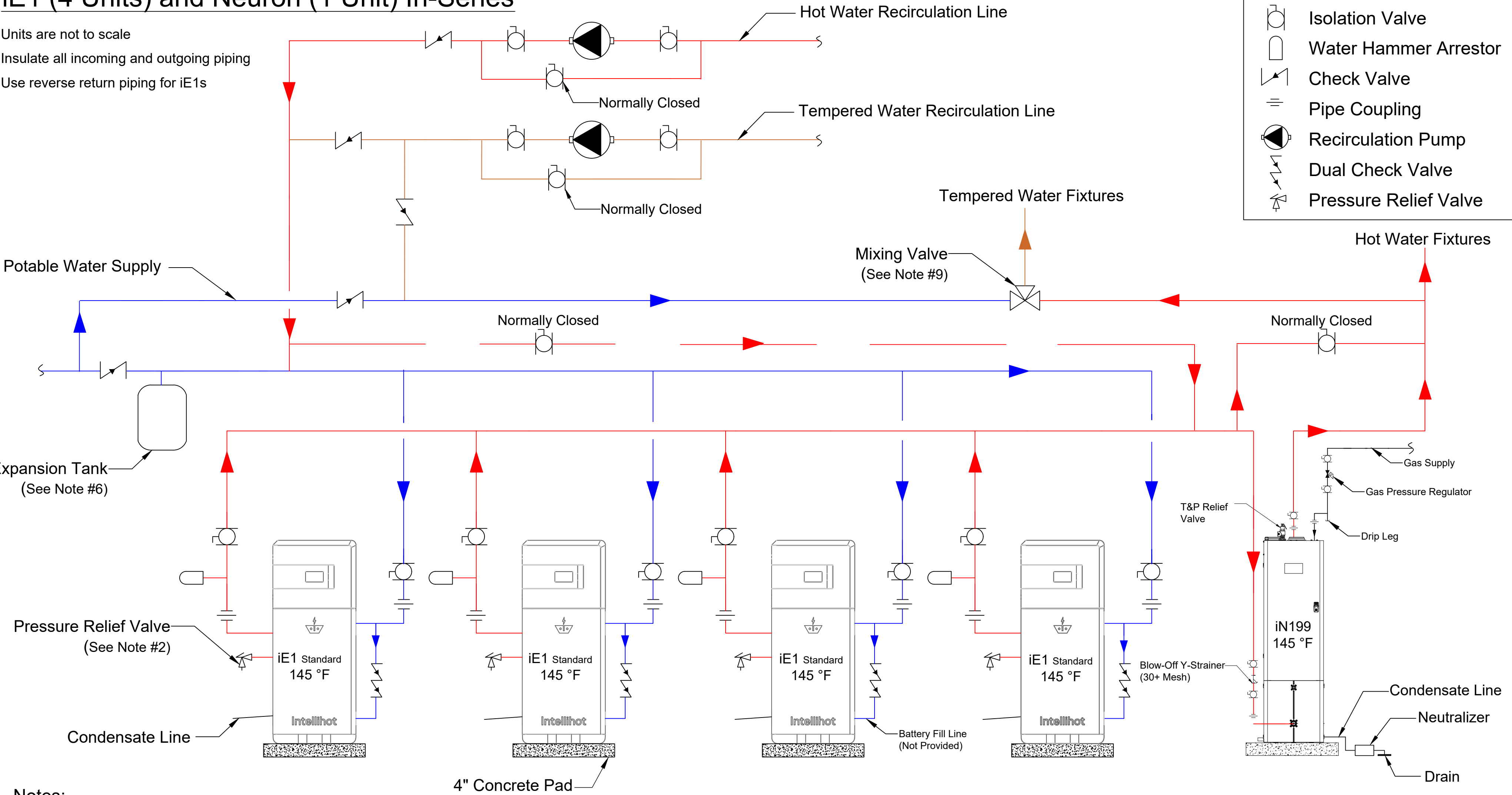


# iE1 (4 Units) and Neuron (1 Unit) In-Series

Units are not to scale  
Insulate all incoming and outgoing piping  
Use reverse return piping for iE1s



### Notes:

1. This schematic is a suggested piping configuration. Units are not to be installed in a closed loop system.
2. Pressure relief valve is shipped with the iE1 unit and needs to be installed. T&P relief valve ships with Neuron unit.
3. Y-strainer is built into the iE1 unit and accessible for service from the outside.
4. Any additional requirements from local codes and ordinances shall supersede this diagram.
5. For pipe sizes and electrical requirements, please refer to the operation and installation manual.
6. Expansion tank to be sized based on the gallons of water in the plumbing system and to be installed per manufacturer's instruction.
7. Recommended: Check valve to be installed at every sink and aerator to be used at all fixtures.
8. Water hammer arrestor is not shipped with the iE1 unit, but the Neuron unit ships with it installed inside the cabinet.
9. Mixing valve and plumbing circuit to be installed per manufacturer's instructions.

This document/drawing contains confidential and proprietary information and is the property of Intellihot Inc. This document/drawing was prepared for the sole purpose of soliciting quotes, producing samples, or propose services. It is submitted in confidence on the condition that you and your representatives have, by receiving it, agreed not to reproduce or copy it, in whole or in part, or to furnish such information to others, or to make an other use of it except for the purposes stated above.

DRAWING NUMBER:

JOB NAME:

