


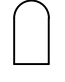
iE1 (5 Units)

Ambient Temperature Range: -10 to 110°F
Units are not to scale


LEGEND




Isolation Valve




Water Hammer Arrestor




Check Valve



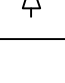
Pipe Coupling



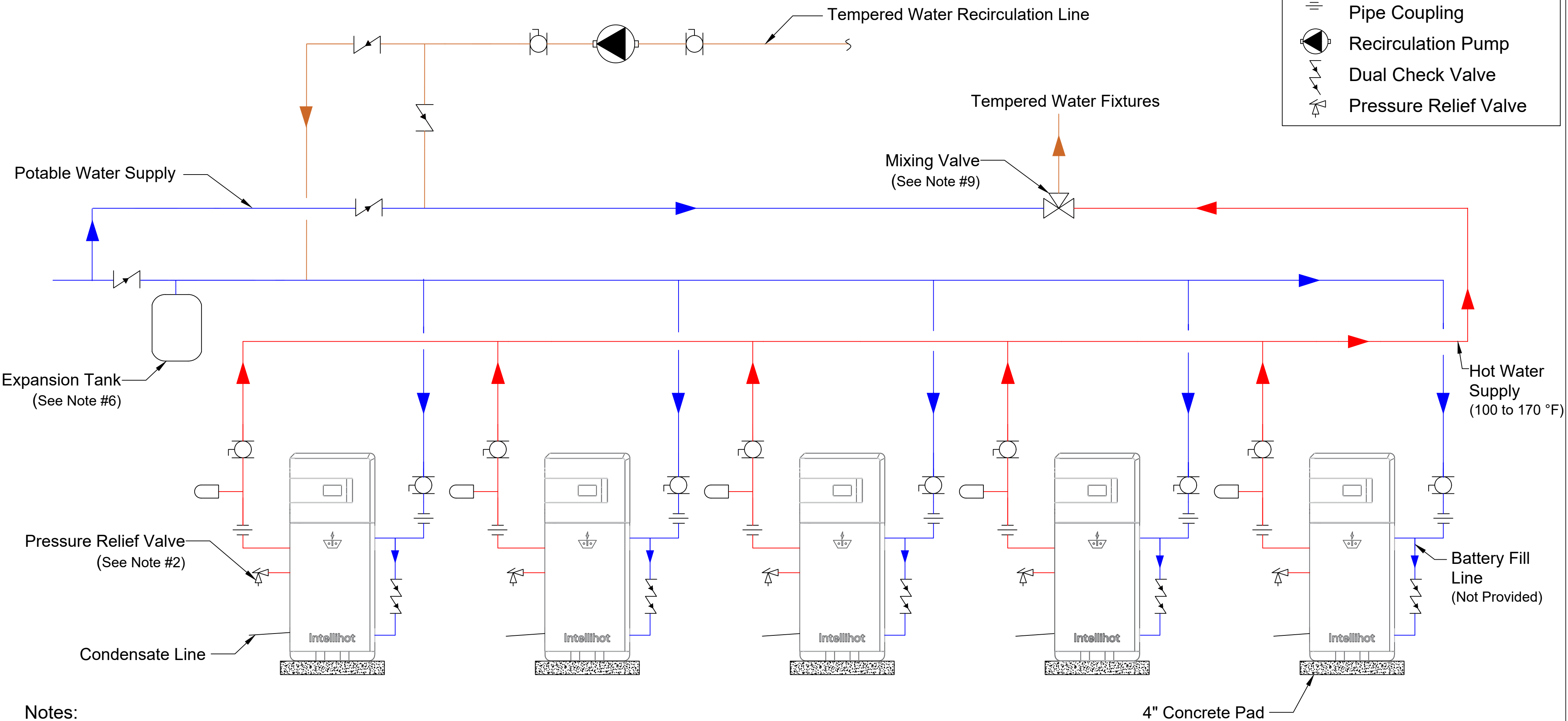
Recirculation Pump



Dual Check Valve



Pressure Relief Valve



- Notes:
1. This schematic is a suggested piping configuration. Units are not to be installed in a closed loop system.
 2. Pressure relief valve is shipped with the unit and needs to be installed.
 3. Y-strainer is built into the unit and accessible for service from the outside.
 4. Any additional requirements from local codes and ordinances shall supersede this diagram.
 5. For pipe sizes and electrical requirements, please refer to the operation and installation manual.
 6. Expansion tank to be sized based on the gallons of water in the plumbing system and to be installed per manufacturer's instruction.
 7. Recommended: Check valve to be installed at every sink and aerator to be used at all fixtures.
 8. Water hammer arrestor is not shipped with the unit and needs to be purchased. It should be installed between all valves and each unit.
 9. Mixing valve and plumbing circuit to be installed per manufacturer's instructions.

This document/drawing contains confidential and proprietary information and is the property of Intellihot Inc. This document/drawing was prepared for the sole purpose of soliciting quotes, producing samples, or propose services. It is submitted in confidence on the condition that you and your representatives have, by receiving it, agreed not to reproduce or copy it, in whole or in part, or to furnish such information to others, or to make an other use of it except for the purposes stated above.

DRAWING NUMBER:

JOB NAME:

