

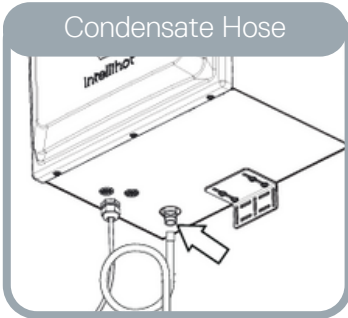


# Wall Hung Required Maintenance Guide

Applicable Models: i200, i250, iQ251, &iQ251D

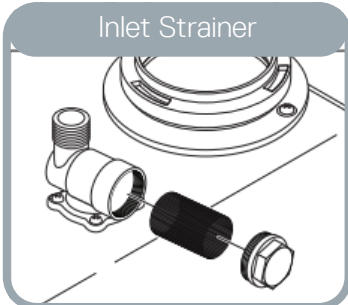
## Required Quarterly Maintenance Procedures

Condensate Hose



Remove, inspect and clean condensate hose

Inlet Strainer



Inspect and clean Inlet strainer located on the cold inlet (Top Right)

### TOOLS NEEDED



Channel Locks



Gloves



5 Gallon Bucket



# Wall Hung Required Maintenance Guide

Applicable Models: i200, i250, iQ251, & iQ251D

## CLEANING THE CONDENSATE HOSE

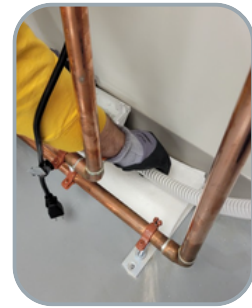
1.

Unplug the unit and put the 5 gallon bucket underneath the unit, then with gloves on pull the condensate hose from the bottom of the unit. Dispose of any liquid that drains into the bucket.



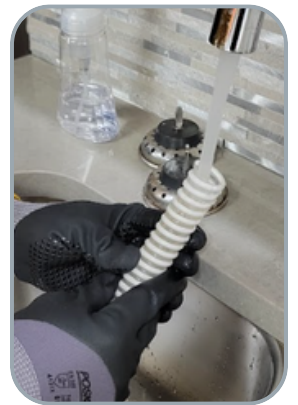
2.

Remove the hose from the connection of the neutralizer.



3.

Pour warm water from the top of the hose and flip it to the drain, then pour warm water from the bottom of the hose and flip it to the drain.



4.

Reinstall the condensate hose, and then reattach the condensate hose to the unit and the neutralizer. Turn the unit back on and ensure there are no leaks on the condensate connections





# Wall Hung Required Maintenance Guide

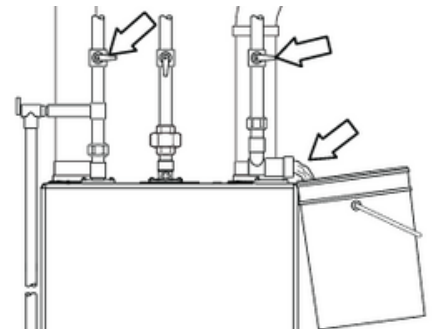
Applicable Models: i200, i250, iQ251, &iQ251D

## CLEANING THE INLET STRAINER

1. With the power off, isolate the unit by closing the **inlet** and **outlet** isolation valves, and relieve pressure and drain some of the water using the **T&P** valve.



2. Use the 5 gallon bucket to catch any water that drains from the inlet strainer as you remove the cap from the inlet strainer with the channel locks



3. Remove and inspect the strainer mesh from inside of the wye strainer and clean it with cold water.



4. Slowly open the outlet then inlet isolation valves to repressurize the unit, then open a nearby faucet for 2 to 3 minutes before powering back on to purge any air from the system.

