

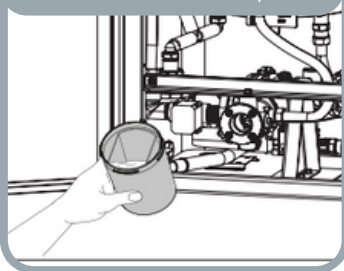


Neuron Required Maintenance Guide

Applicable Models: iN401 & iN501

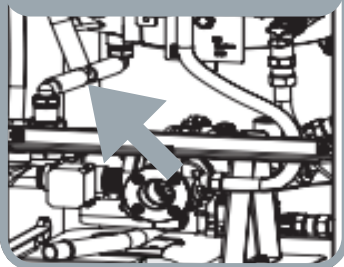
Required Quarterly Maintenance Procedures

Condensate Cup



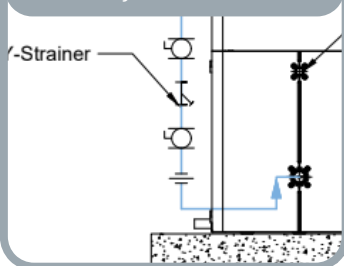
Remove, inspect and clean condensate collector cup (lower left of unit)

Condensate Line



Inspect condensate hoses between the heat exchangers and the condensate cup

Wye Strainer



Inspect and clean wye strainer located on the cold inlet.

TOOLS NEEDED



10mm Socket & Ratchet



Channel Locks



Gloves



5 Gallon Bucket



Neuron Required Maintenance Guide

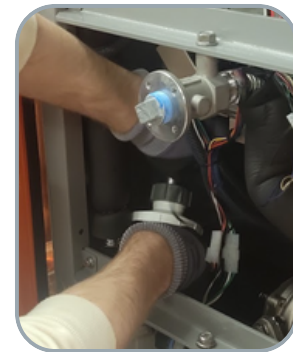
Applicable Models: iN401 & iN501

CLEANING THE CONDENSATE

1. Turn the unit off at the rocker switch, then using 10mm socket and ratchet remove bolts on lower doors to open.



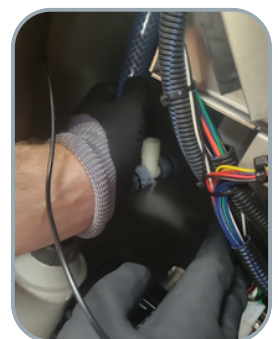
2. With gloves on locate condensate collector cup inside of the cabinet, and twist off the gray connector from the top of the cup. Then twist the white lid to remove it from the rest of the cup, and set it to the side



3. Remove the inner cylinder of the cup and dispose of any liquid inside. Clean the inner cylinder and the lid with warm soapy water. Then reassemble and reattach the cup back in place



4. Visually inspect the hose's that drain into the cup for any blockages at the connections. If any blockages are found remove the hose from the fitting and clean out any blockage.





Neuron Required Maintenance Guide

Applicable Models: iN401 & iN501

CLEANING THE WYE STRAINER

1. With the power off, isolate the unit by closing the **inlet** and **outlet** isolation valves, and relieve pressure and drain some of the water using the **T&P** valve.



2. Place a bucket underneath the leg of the wye strainer and use the channel locks to remove the nut on the leg of the wye strainer. Ensure that you have closed off the Isolation valve before the wye strainer.



3. Remove and inspect the strainer mesh from inside of the wye strainer and clean it with cold water, and then reinstall the strainer.



4. Slowly open the inlet then outlet isolation valves to repressurize the unit, then open a nearby faucet for 2 to 3 minutes before powering back on to purge any air from the system.

