



# Intellihot Case Study



Miramar, FL



## Industry

Lodging

## Representative

Cagle Sales

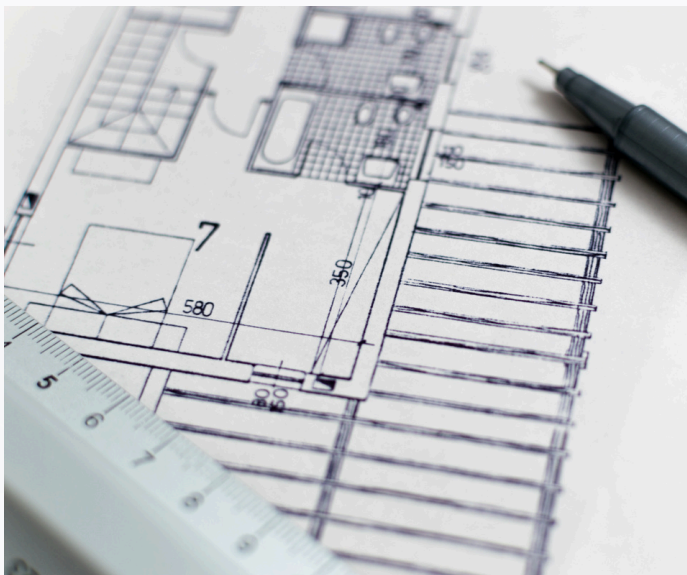
## Contractor

Coastal Choice Construction

## Product

(4) iN199

## before.



## after.



**“We often run into Contractors or Engineers who believe that in order to have redundancy and reliability they need to stick to tank type heaters. It was a pleasure to put the Intellihot heaters on display and show what Truly commercial tankless products they are.”**

Cagle Sales

## **Putting Intellihot's Tank-Competitive Delivery Rate to Test**

Intellihot's commercial-grade tankless water heaters promise to be competitive with tanks with their high delivery rates. However, before a 97-room hotel in Florida decided to select Intellihot's Neuron iN199 drop-in tankless water heaters, they wanted to test the American-assembled products' tank-competitive delivery rates.

### **The Test Site:**

This hotel has 97 rooms, spread over 5 floors. The boiler room is located on the 1st floor of the property, located in Florida.

### **Test 1:**

- Three Intellihot iN199 units with one in standby were tested to handle hot water demands.
- All four units were masterlessly cascaded to function as a singular hot water system.
- Results showed that the water heaters successfully delivered hot water at 107.8 degrees Fahrenheit to the furthest shower, even after 10 minutes.

The water heaters performed as follows:

- Unit 1: Running for 100% of the time
- Unit 2: Turned OFF manually
- Unit 3: Running for 35% of the time
- Unit 4: Running for 60% of the time

### **Test 2:**

Additional showers were turned on to stress test the water heaters. Despite 31 showers running concurrently, all three water heaters ran for 100% of the time and maintained hot water delivery at 107-108 degrees Fahrenheit.

### **Conclusion:**

The Intellihot water heaters demonstrated reliability in meeting the hotel's hot water demands, even under stress testing conditions. The units' on-demand performance, energy efficiency, and ability to handle peak load scenarios indicate potential savings on gas bills and reduced carbon emissions for the hotel.

