



Intellihot Case Study



Albuquerque, NM



Industry

Lodging

Representative

Shyne & Associates

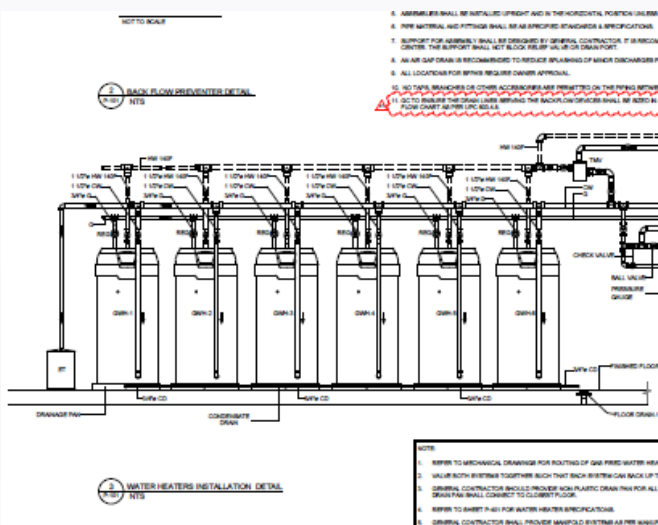
Contractor

Sundaram Builders

Product

(3) iN501

before.



after.



TIMELINE

May 2023

New Element Hotel Specified 6 Tank Type water heaters.

June 2023

Shyne Associates proposed the specification change to QTY 3 IN501

February 2024

Trained the installing Plumber

June 2024

Units Installed

Switching the Spec

Shyne and Associates offered a tankless solution to the engineers for the new Element Hotel in Albuquerque, NM. The benefits of going tankless included reduced equipment, built in redundancy and comparable delivery rates. Intellihot units would allow the hotel to avoid storing hundred of gallons of water while mitigating legionella risks and reducing operating costs. The plan to switch was set in motion.

The applications team confirmed the sizing on this project from the building plans and reduced the amount of original equipment from (6) 199,000 tank type water heaters to 3 iN501s.

Intellihot's representative in that region, Shyne & Associates provided a timely, competitive quote and facilitated the training, purchase and install at the end of June 2024.

About Element Albuquerque Uptown

Admire the Sandia Mountains from the Volaré rooftop bar where guests can savor handcrafted cocktails and local brews while admiring the breathtaking panoramic views as the sun sets creating a captivating backdrop for unforgettable moments. Inspired by nature, Element offers a sleek and sustainable design.

About Shyne & Associates

Shyne & Associates was founded in the early 1940's by G. Robert Parker. He started the company by representing Coyne & Delany Flush Valve Company. With the addition of George Shyne in the late 60's, Parker Shyne & Associates, as it was named then, represented some of the most prominent manufacturers in the plumbing industry. Steve Stone took over the company 24 years ago and many of the same core manufacturers are still the basis of the company today.

They pride themselves on having a fully stocked 11,000 square foot warehouse providing for some of the area's shortest lead times and best availability, same day shipping on most orders as well as high order completion rates

Their commitment to quality, accountability, honesty and service sets Shyne & Associates Inc. apart as the company of choice for every commercial plumbing supply needs.



**GUARANTEED DROP-IN
REPLACEMENT PRODUCT**

AO Smith Model# BTH-500
https://www.hottwater.com/files/specs/ao-smith_bth500.pdf

Intellihot Model iN501

Rise	GPH		GPH
40°F	1439		1446
70°F	822		828
100°F	576		576
140°F	411		414

