



Intellihot Case Study



Goshen, IN
Replacement



Industry

Multi-Family

Contractor

Mechanical Man Inc.

Representative

Top Marketing

Supplier

Central Supply

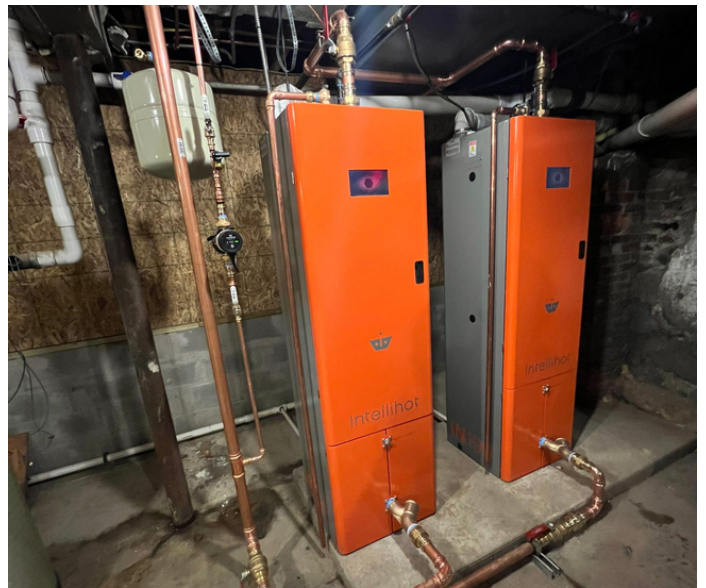
Product

iN199

before.



after.





Installation in process

“

The customer liked the smaller form and the efficiency but were also excited about the ease of maintenance. The weight made a huge difference with the installers as they had to wrestle the BTHs out of place and up the stairs. Tech Support was excellent too - very easy to get ahold of and super helpful with questions our plumbers had.

”

**-Tony Jamora
Mechanical Man**

Mechanical Man, Inc
HVAC contractor in Elkhart
County, Indiana.
www.mech-man.com

100 Year Old Building Replaces 100 Year Old Water Heating Technology.

Near the center of downtown Goshen, the Hattle Hotel Building had provided travelers and workers a place to stay for over 100 years. With the help of Historic Preservation Tax Credit dollars, LaCasa of Goshen, wanted to renovate the building into twelve fully appointed apartment units for low-income residents.

While the existing water heaters themselves were not 100 years old, the technology of tank type water heating is.

This much needed replacement opted for the sleek profile and technologically advanced features of the Intellihot iN199 drop in replacement unit. With like for like connection points, swapping out these old tanks was a breeze for installing contractor, Mechanical Man.

The **Problem.**



One of the buildings current water heaters was inoperable. Some of the stipulations that LaCasa requested were the same capacity, same or better performance and if possible smaller form as their maintenance for the building complained about the space in and around water heaters was very restrictive.

The **Solution.**



Two iN199 units were chosen to replace two AO Smith Cyclone units. Thus eliminating the need to store any water, and only using energy when water is needed. Ease of installation, energy cost reduction, and LTE connectivity are some of the benefits and features for which the iN199 was selected for this retrofit.

