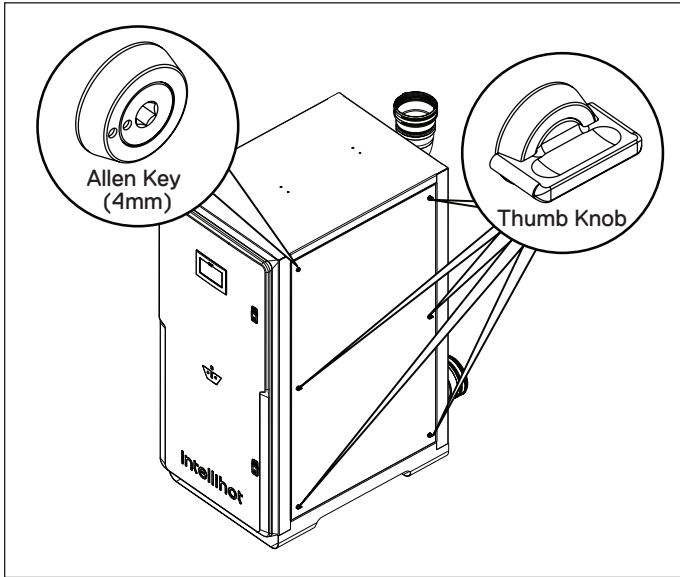


## 14. Maintenance

### 14.1 Side Panel Doors

Each side panel door contains one Allen key lock in the upper left hand corner. Turn the key 90° clockwise to unlock. The other locks are a thumb knob style.



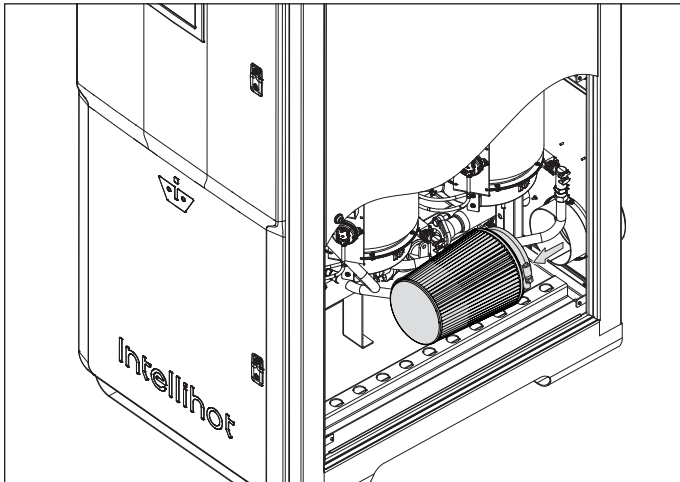
### 14.2 Air Filter

#### 14.2.1 Inspection

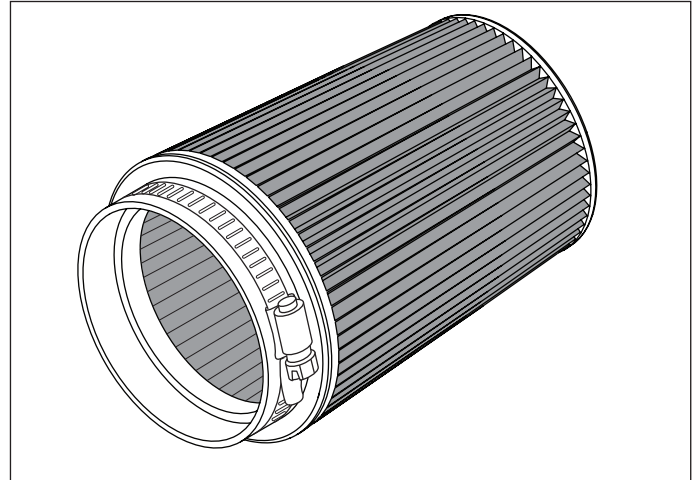
Check the filter **every six months** for dirt and dust build-up. Clean and re-oil the filter annually. If the filter is dirty, follow the cleaning procedure.

**Note:** The air filter is manufactured by K&N. Contact K&N at 800-858-3333 or online at [www.knfilters.com](http://www.knfilters.com) for the necessary supplies to clean the filter.

1. Loosen the band clamp and remove the air filter.



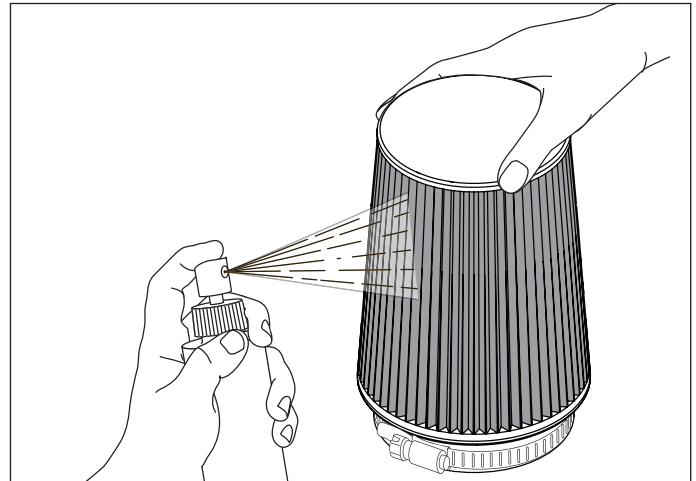
2. Inspect the inside of the filter for dirt and dust build-up. Clean the filter, if needed.



3. After inspection and/or cleaning, replace the air filter and snugly tighten the band clamp.

#### 14.2.2 Cleaning Procedure

1. Liberally spray K&N Air Filter Cleaner and Degreaser (99-0606) onto both sides of filter and allow to soak for 10 minutes to loosen the dirt. Do not allow cleaner to dry on air filter.



### NOTICE

*K&N Air Filter Cleaner is the only cleaner formulated to safely clean K&N air filters with cotton media. The use of any other cleaning solution could damage the cotton material.*

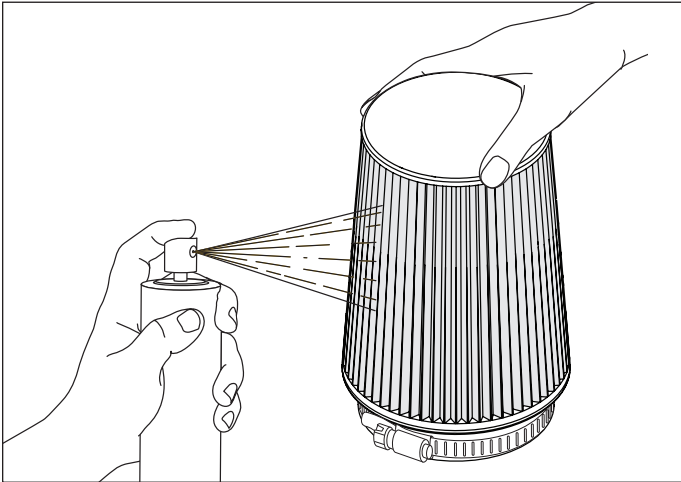
2. Rinse the air filter with cool low-pressure water applied from the outside inward in order to flush the dirt out of the filter. Continue to rinse the filter until all traces of cleaner are gone. It may be necessary to repeat Steps 1 and 2.

3. After rinsing, gently shake off the excess water and air dry the filter.

## NOTICE

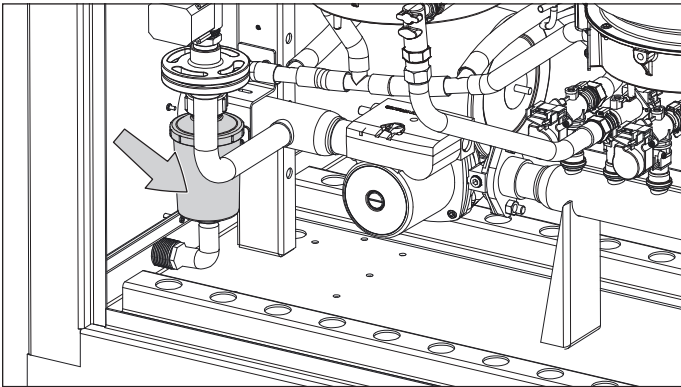
*Do not use compressed air to dry the filter. Do not apply oil to the filter until it is completely dry.*

4. Spray K&N Aerosol Air Filter Oil (99-0504) evenly along the crown of each pleat holding nozzle about 3" away. Allow oil to wick for approximately 20 minutes. Touch up any light areas on either side of the filter until there is a uniform red color at all areas.

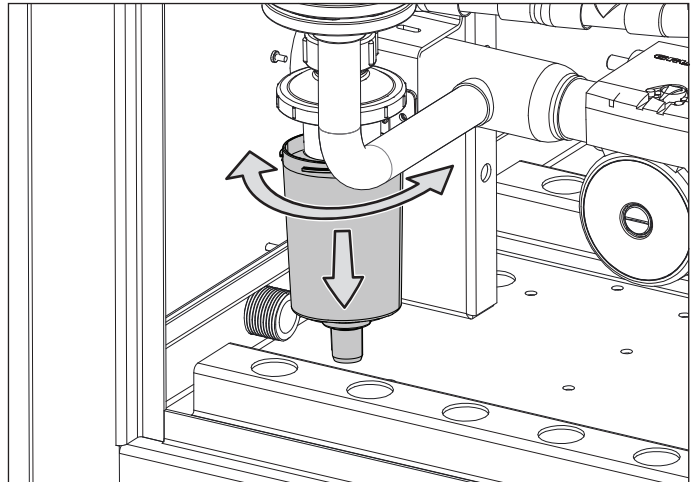


### 14.3 Condensate Sediment Cup Cleaning

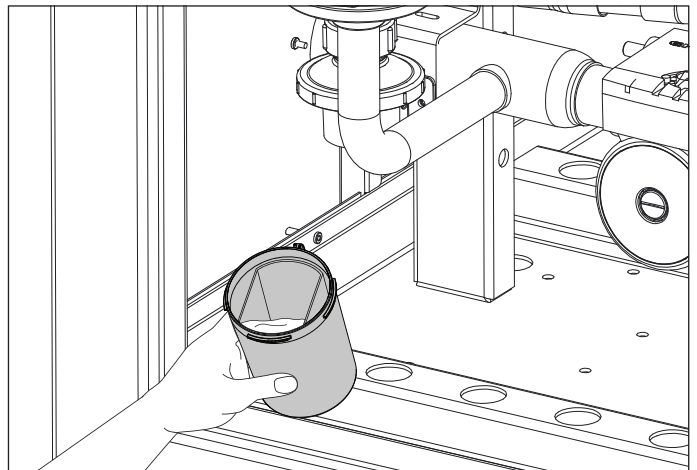
One sediment cup is located inside the water heater cabinet. This cup should be removed and cleaned **every 3 months or as often as necessary**.



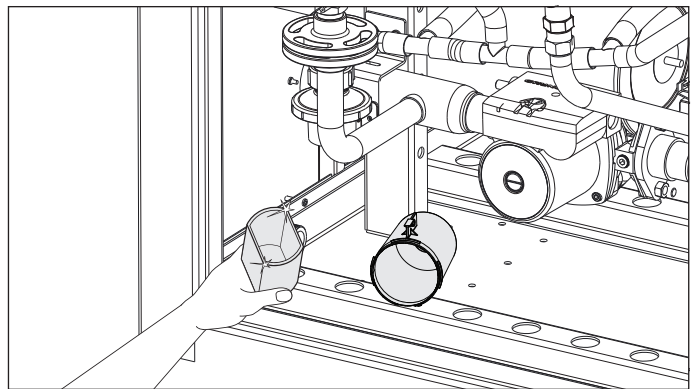
1. Twist the bottom of the sediment cup to release the locking clips.



2. Pull down on the sediment cup and pull it away from the upper portion of the unit. The sediment cup will normally be full of condensate. Carefully, pour the condensate into a container and properly dispose of it.



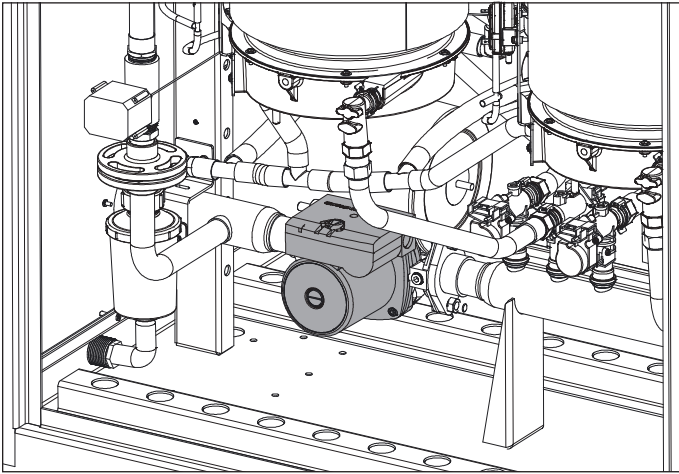
3. Remove the inner sediment cup from inside the lower portion of the unit.



4. Remove any dirt and debris build-up using soap and warm water.
5. Replace the inner sediment cup and reattach the entire unit.

## 14.4 Maintenance-Free Circulation Pump

The circulation pump is maintenance-free and therefore does not require any servicing. The speed setting must be set to Speed 3 (III).



## 14.5 Wye Strainer

**Please Note:** This heater includes an external Wye strainer. The Wye strainer must be installed to qualify for unit warranty.

1. Please clean the Wye strainer every 3 months.

## 14.6 Heat Engine Locations

Use the following diagrams to identify the location of the heat engines.

