

14. Maintenance

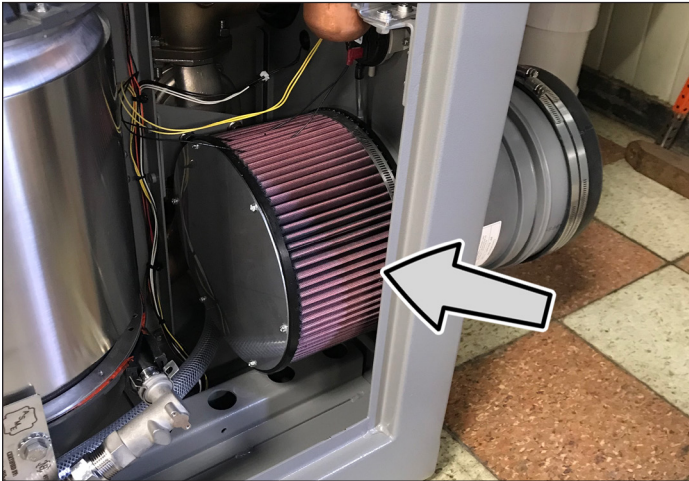
14.1 Air Filter

14.1.1 Inspection

Check the filter every six months for dirt and dust build-up. Clean and re-oil the filter annually. If the filter is dirty, follow the cleaning procedure.

Note: The air filter is manufactured by K&N. Contact K&N at 800-858-3333 or online at www.knfilters.com for the necessary supplies to clean the filter.

1. Loosen the band clamp and remove the air filter.



2. Inspect the inside of the filter for dirt and dust build-up. Clean the filter, if needed.
3. After inspection and/or cleaning, replace the air filter and snugly tighten the band clamp.

14.1.2 Cleaning Procedure

1. Liberally spray K&N Air Filter Cleaner and Degreaser (99-0606) onto both sides of filter and allow to soak for 10 minutes to loosen the dirt. Do not allow cleaner to dry on air filter.

NOTICE

K&N Air Filter Cleaner is the only cleaner formulated to safely clean K&N air filters with cotton media. The use of any other cleaning solution could damage the cotton material.

2. Rinse the air filter with cool low-pressure water applied from the outside inward in order to flush the dirt out of the filter. Continue to rinse the filter until all traces of cleaner are gone. It may be necessary to repeat Steps 1 and 2.
3. After rinsing, gently shake off the excess water and air dry the filter.

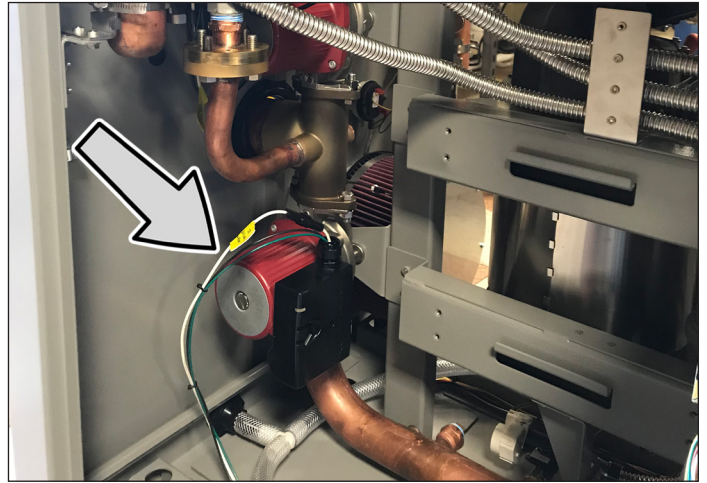
NOTICE

Do not use compressed air to dry the filter. Do not apply oil to the filter until it is completely dry.

4. Spray K&N Aerosol Air Filter Oil (99-0504) evenly along the crown of each pleat holding nozzle about 3" away. Allow oil to wick for approximately 20 minutes. Touch up any light areas on either side of the filter until there is a uniform red color at all areas.

14.2 Maintenance-Free Circulation Pumps

The circulation pumps are maintenance-free and therefore does not require any servicing. The speed setting must be set to Speed 3 (III).



14.3 Condensate Trap & Neutralizer

NOTICE

This heater does NOT have an integrated condensate trap. An external trap must be installed to prevent CO from backing into the room.

1. Please follow the condensate trap manufacturer's recommended maintenance. We recommend **every 3 months or as often as necessary**.
2. If condensate neutralizer is installed, please follow the condensate neutralizer maintenance as per the manufacturer's recommendation.

14.4 Wye Strainer

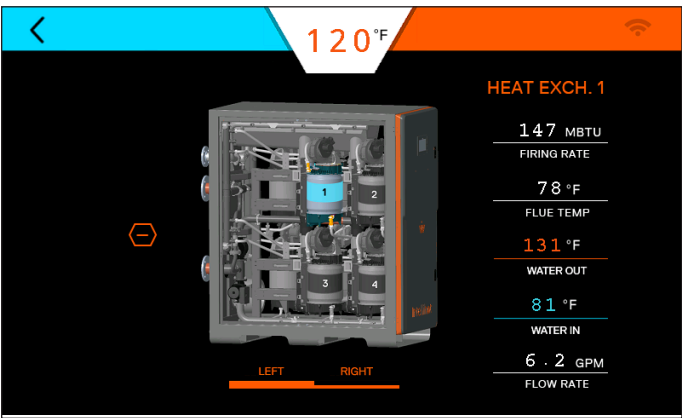
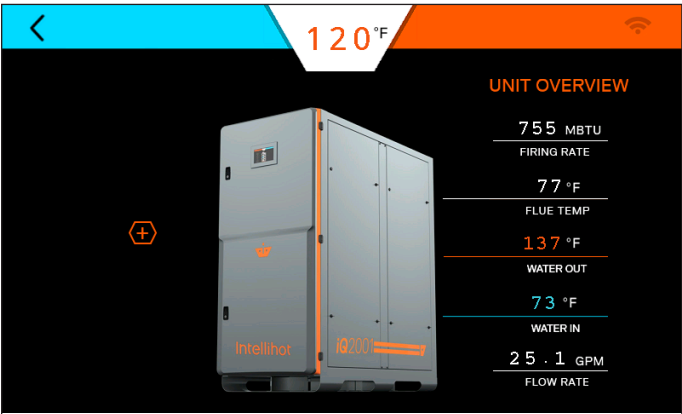
NOTICE

This heater includes an external Wye strainer. The Wye strainer must be installed to qualify for unit warranty.

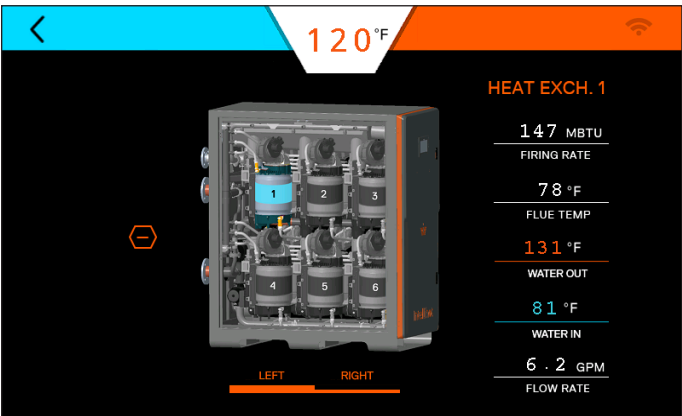
1. Please clean the Wye strainer every 3 months.

14.5 Heat Engine Locations

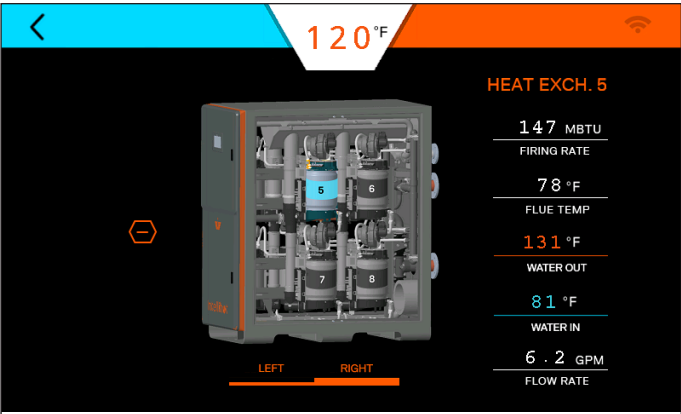
Use the following diagrams to identify the location of the heat engines.



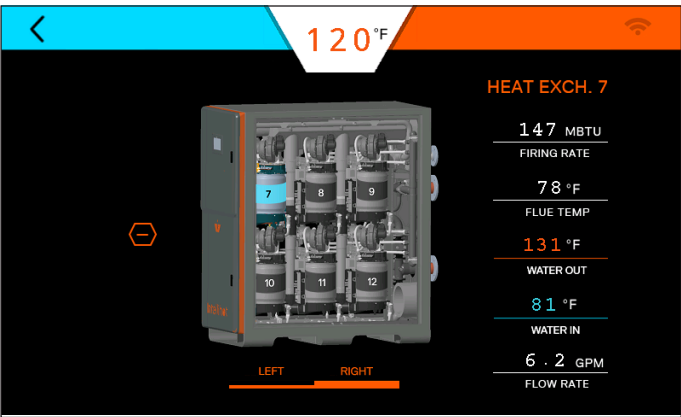
iQ2001 Left status.



iQ3001 Left status.



iQ2001 Right status.



iQ3001 Right status.

When a Heat Exchanger is idle due to low demand, it will display this heat exchanger is on standby. A button named as more available to view the parameters.

