


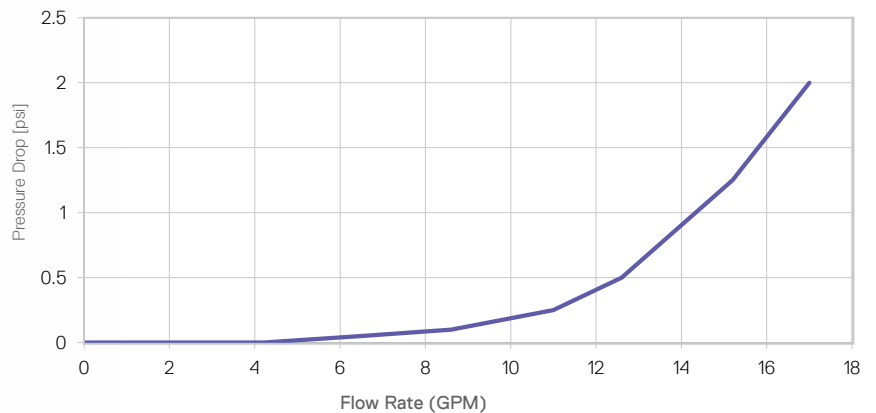
Commercial Tankless iN401 Submittal Data

Date:	<input type="text"/>	Bid Date:	<input type="text"/>
Project Name:	<input type="text"/>	Fuel Type:	<input type="checkbox"/> Natural Gas <input type="checkbox"/> Propane
Project #:	<input type="text"/>	Factory Option:	<input type="checkbox"/> iNtouch-BMS
City State Zip:	<input type="text"/> <input type="text"/> <input type="text"/>	Factory Option:	<input type="checkbox"/> Propane Setup
Engineer:	<input type="text"/>		
Contractor:	<input type="text"/>		

	Temperature Rise (ΔT) °F						
	40	50	60	70	80	90	100
Flow (GPM)	19.3	15.4	12.9	11.0	9.6	8.6	7.7



PRESSURE DROP VS. FLOW RATE



KEY FEATURES

- 1 Weldless 316L Stainless Steel Heat Exchanger with Individual Controls for Masterless Cascading
- ASME-HLW Compliant | Designed & Built in the U.S.
- Factory monitoring via telliCare messaging.
- Turn Down Ratio 13.3:1 per Unit, Cascade Up to 4 Units for 53:1 Turndown



iN401 Short Spec & Accessories

The water heater shall be a direct fired tankless, fully condensing, water-tube design. The power burner shall have full modulation. The minimum firing rate shall not exceed 30,000 BTU/HR. The heat exchanger shall be constructed with 316L stainless steel helical water tube and be fully floating with no welded joints. The water heater control system shall incorporate onboard multi-unit sequencing logic that would allow masterless cascading without the need for a master controller. The heat exchangers shall sequence between each other, operating in parallel to meet the load. Each heat exchanger will default to individual control upon failure of the sequencing chain. Changes to operational parameters on any one of the heat exchangers will automatically adjust all other heat exchangers to the most recent parameter change. The water heater shall utilize a low loss header design that utilizes an internal pump and heat exchanger bypass to reduce pressure drop through the vessel.

Recommended Accessories iN401:

1. Condensate Neutralizer Kit

This condensate is acidic, with a pH level between 3 and 4. Local building codes apply for an in-line neutralizer to be installed (not included) to treat this water.

2. Outdoor Installation Kit

3. iBMS BacNET

Intellihot's iNTouch BMS has three unique features that are not available in any other BMS in the industry.

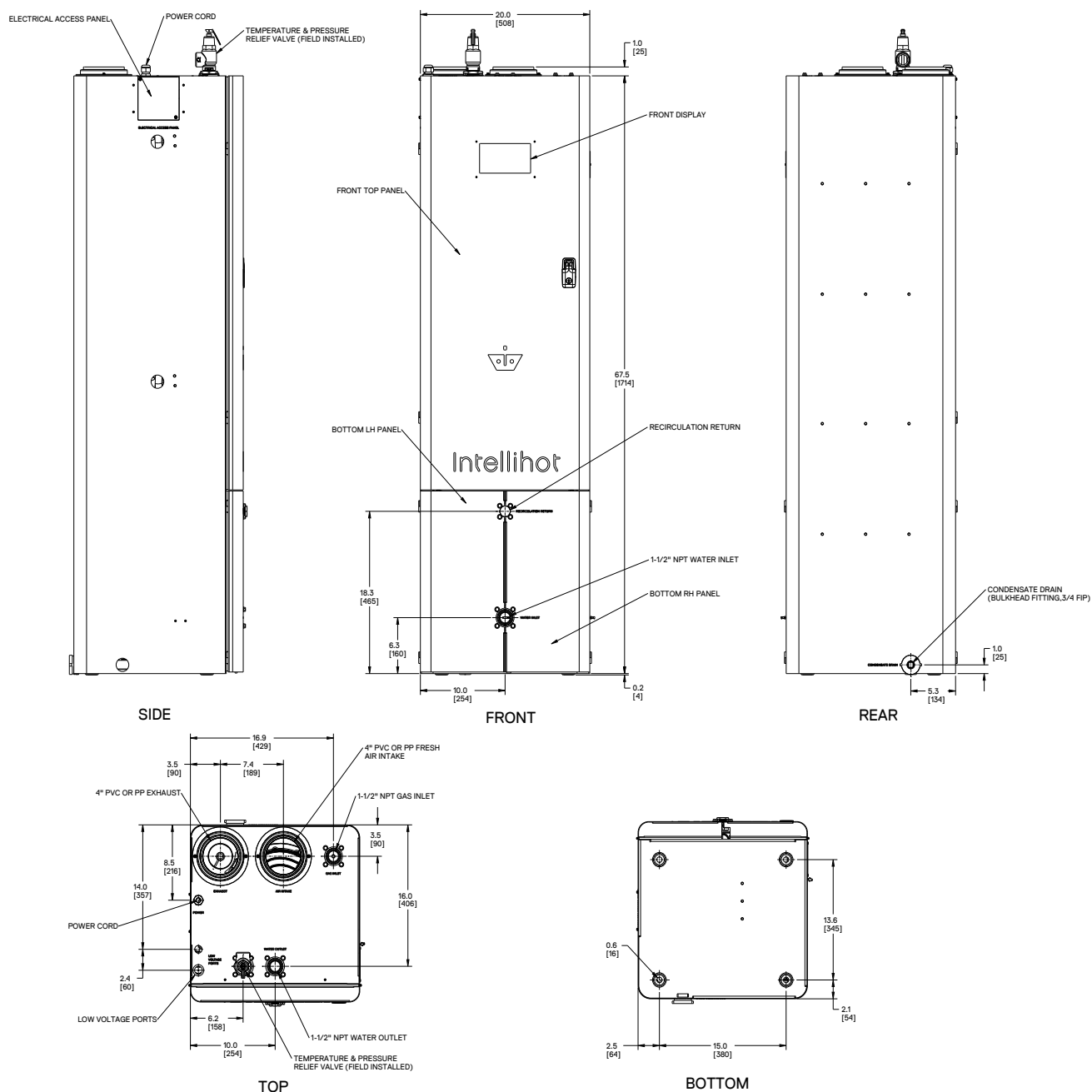
- External Pump Power – Powers building recirculation.
- Remote Setpoint – Allows the temperature to be set remotely via a 0-10 VDC or 4-20mA signal.
- Alarm – Buzzes if it detects anything wrong with any of the components it is connected to, and communicates the appropriate error codes so that the user knows which component needs attention.

iN401 Specifications

PARAMETER	MODELS
	iN401
Type	Indoor, Floor Mounted, On-Demand Water Heater
Fuel	Preset for NG / LP convertible without additional parts
Minimum Input (BTU/hr)	30,000
Maximum Input (BTU/hr)	399,999
Maximum Output (BTU/hr)	383,999
Thermal Efficiency	96%
Turn Down Ratio (TDR)	13.3:1
Water Inlet / Outlet Connections	1-1/2" NPT
Gas Inlet Connection	1-1/2" NPT
Condensate Drain Connection	3/4" FIP
Maximum Condensate Flow Rate (GPH)	2.8
Unit Dimensions H X W X D (Inches)	67.5 X 20 X 20 (15 CU. FT)
Service Clearances	4" on the back, 6" on the top, 21" on the front, and 6" on the sides
Unit Weight (LBS)	345 LBS
Shipping Crate Dimensions H X W X D / Weight	85 X 29.5 X 27 (Inches) / 445 (LBS)
Venting Type	Direct Vent (2 pipe - intake & exhaust), Power Vent (1 pipe - exhaust only, room air)
Exhaust Venting Materials (USA)	Sch. 40 PVC, Sch. 80 CPVC, Polypropylene, Stainless Steel
Exhaust Venting Materials (Canada)	Type BH Gas Vent Classes: II A (PVC), II B (CPVC), II C (Polypropylene), I (AL 29-4C SS)
Exhaust/Air Intake Venting Size (Diameter)	4" Ø
Max 4" Vent Length - Single Pipe / Power Vent	250 FT*
Max 4" Vent Length - Two Pipe / Direct Vent	125 FT*
* Venting Note: From the maximum lengths above, deduct 5 ft. per 90° elbow and 2 ft. per 45° elbow	
Ignition	Electronic Spark Ignition
Temperature Range	100°F – 190°F
Temperature Stability	+/- 4°F
Installation Location Ambient Temperature	40°F – 130°F
Safety	Flame Rod, Thermal Fuse, Overheat Prevention Device, Fan Speed Monitor, Flue Temperature Monitor, Blocked Vent Detector, Dual Flame Sensing
Water Pressure Min / Max (PSIG)	30 / 160
NG/LP - Min. Dynamic Gas Pressure (Full Fire)	NG = 2.5" WC LP= 8" WC (set Gas regulator to 8" WC for NG 11" WC for LP)
NG/LP - Maximum Static Gas Pressure	14" WC (set Gas regulator to 8" WC for NG 11" WC for LP)
Gas Regulator Pressure Set To	8" WC for Natural Gas, 11" WC for Propane
Electrical	120V AC, 60 Hz
Power Consumption	Max 9.5 Amps, 16W (Standby)
Internal Water Volume (gallons)	2
Features	iN401
Built-In Redundancy	Multiple Heat Engines with Individual Control
Cascading	Masterless, 4 units, Automatic Rotation
Common Venting	Yes - up to 4 units
Heat Exchanger	Expandable, Stainless 316L
Appliance Certification to ANSI Z21.10.3	ETL
SCAQMD	Ultra Low Nox (under 20 PPM)
ASME	HLW
Performance GPM	iN401
Hot Water Capacity (45F Rise)	17.1
Hot Water Capacity (70F Rise)	11.0
Hot Water Capacity (90F Rise)	8.6
Hot Water Capacity (100F Rise)	7.7
Hot Water Capacity (140F Rise)	5.5
WARRANTY†	iN401
Basic Warranty (without StartUp)	Hex – 1 Year, Parts – 1 Year, Labor - None
Enhanced Warranty (with StartUp)	Hex – 10 Years, Parts – 2 Years, Labor - None
Labor Warranty (with Start Up & telliCare Connection)	Hex – 10 Years, Parts – 2 Years, Labor - 1 Year

† Heat Exchanger assembly (HEX) does not include, gas valve/blower assembly & sidecast. On 10 year| prorated after year 5. On 6 year| prorated after year 3. telliCare Service is free for one year. Start of warranty is: Per startup report or 2 months from date of manufacture. More specific warranty details can be found in 1/0 Manuals section 18.

iN401 Dimensional Specifications

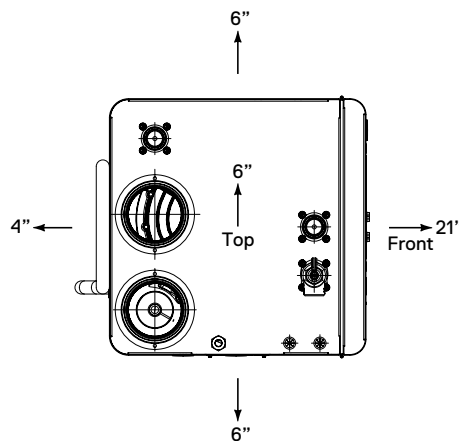


Note: All dimensions are in Inches, and equivalent metric values are specified within []

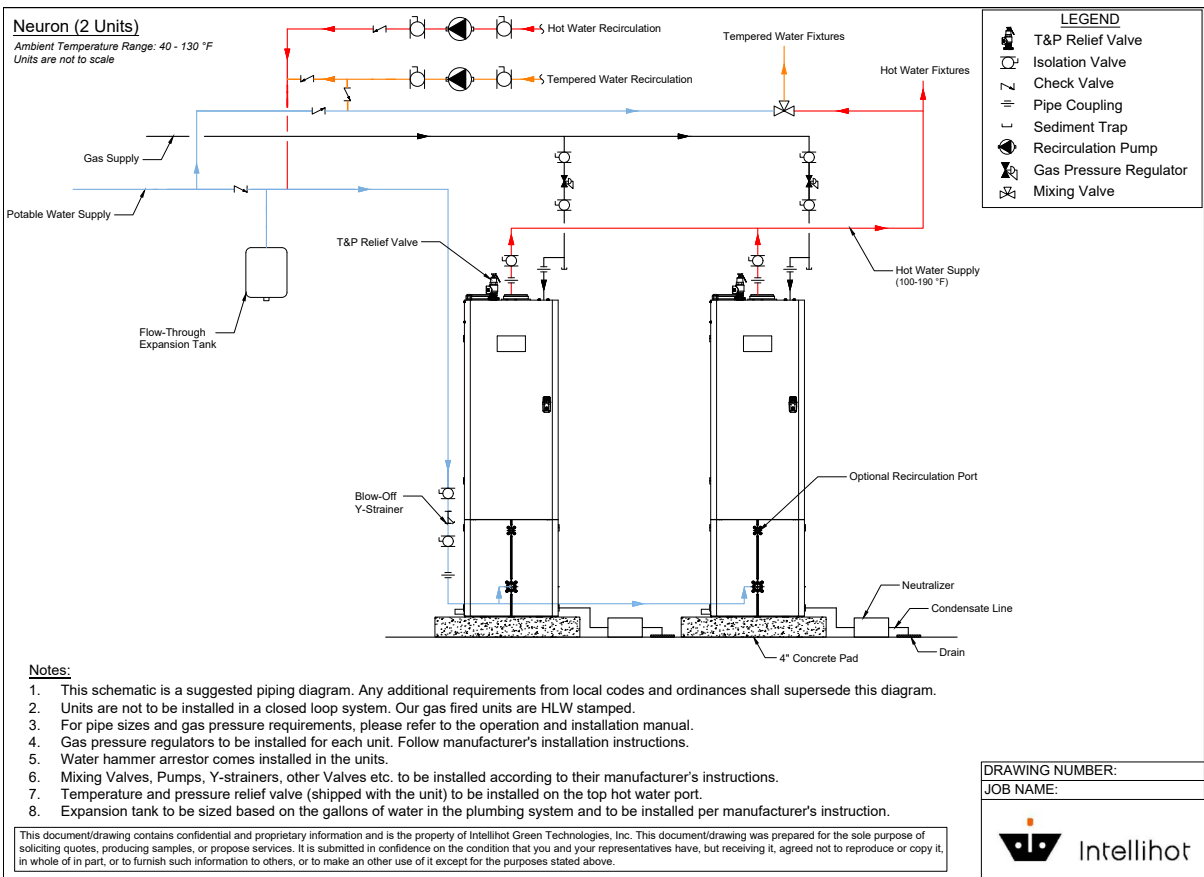
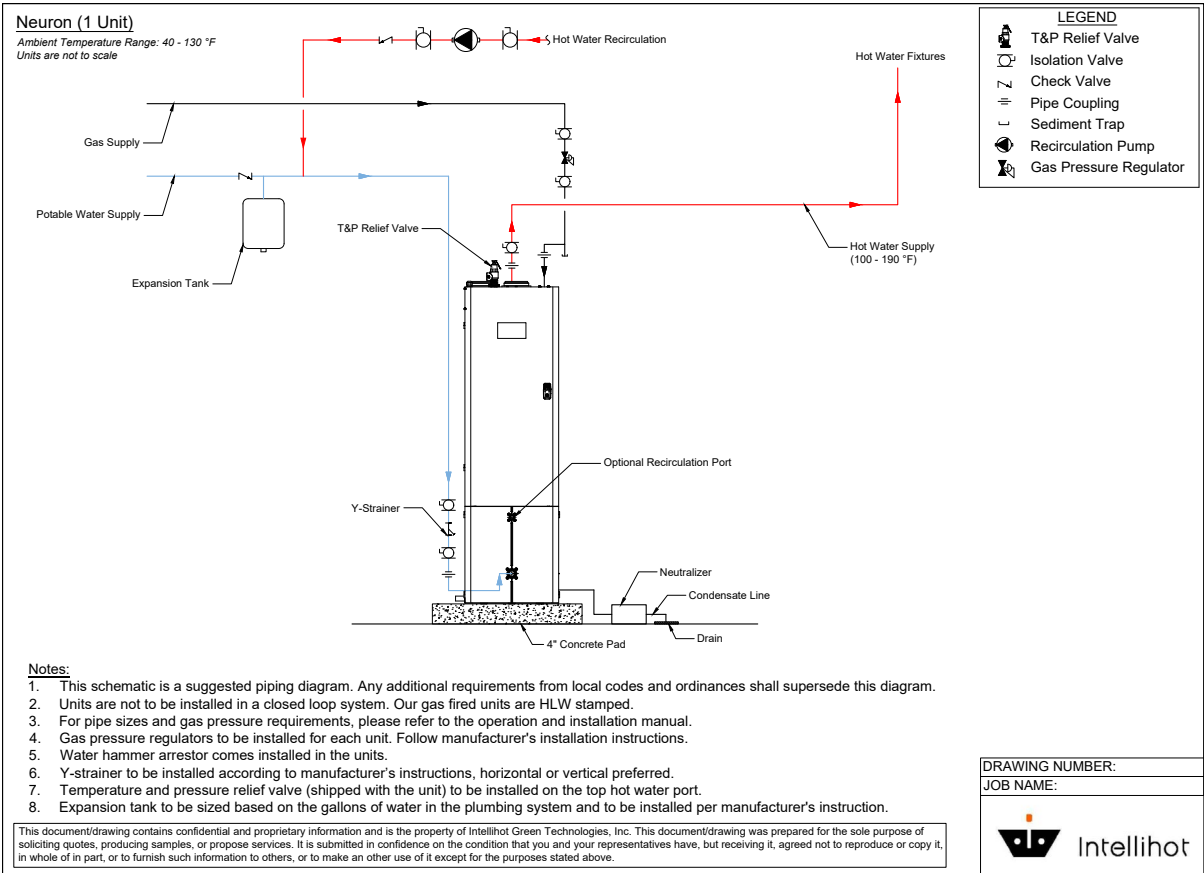
iN401 Service Clearances

Location	Required		Recommended Service Clearance ¹
	From Combustibles	From Non-Combustibles	
Top	6" (152 mm)	2" (50.8 mm)	6" (152 mm)
Back	5/8" (15.8 mm)	5/8" (15.8 mm)	4" (10 cm)
Sides	1" (25.4 mm)	1/2" (12.7 mm)	6" (152 mm)
Front	2" (51 mm)	2" (50.8 mm)	21" (53 cm)
Bottom	0" (0 mm)	0" (0 mm)	0" (0 mm)

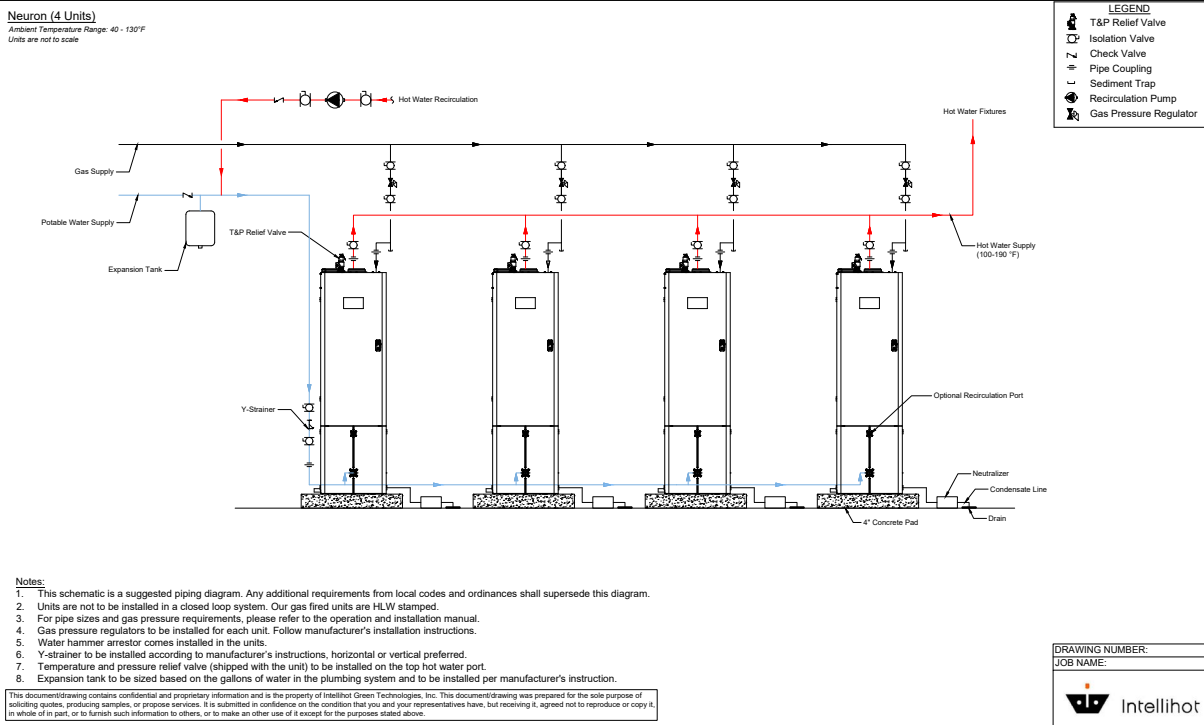
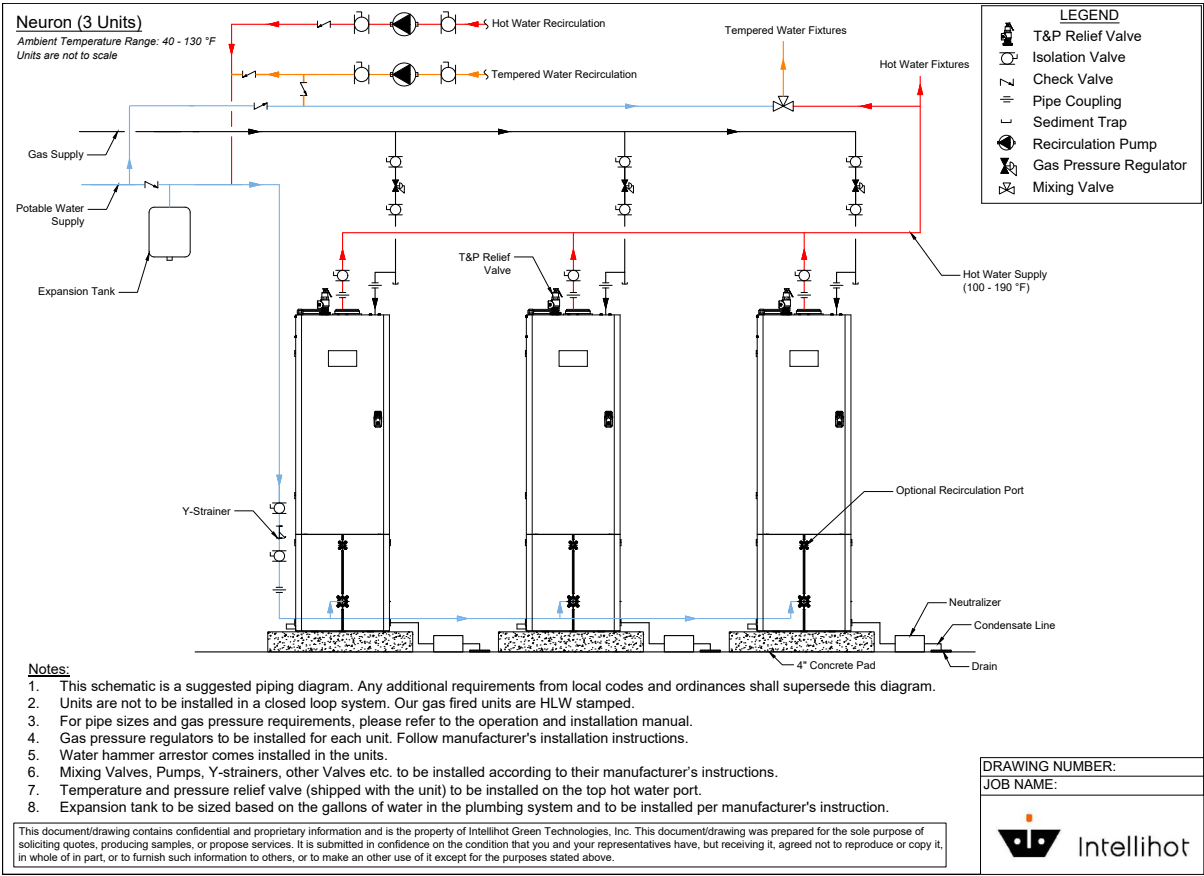
¹ Service clearances are recommended dimensions to allow for normal service of the unit.



iN401 Configuration Options



iN401 Configuration Options



iN401 Venting Guidelines

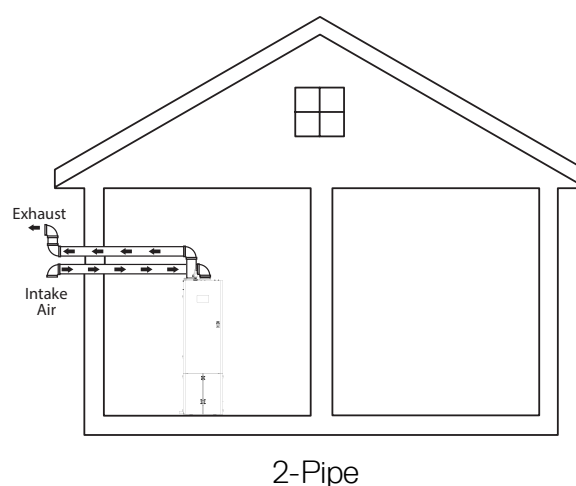
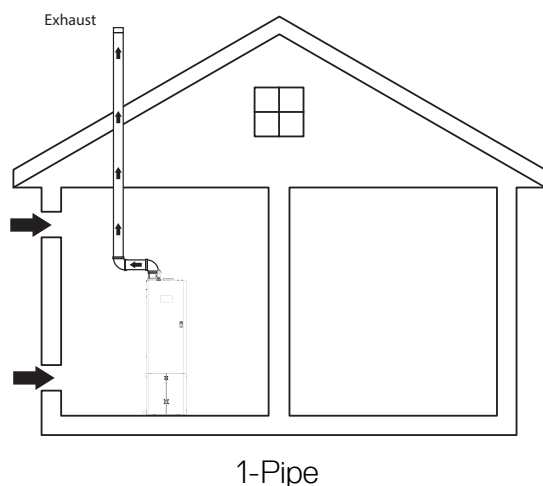
Maximum Pipe Length in Feet				
Number of Units	Venting Type	4" Diameter iN401	6" Diameter iN401	8" Diameter iN401
1	1 Pipe	250	250	250
	2 Pipe	125	125	125
2	1 Pipe	82	250	250
	2 Pipe	41	125	125
3	1 Pipe	40	250	250
	2 Pipe	20	125	125
4	1 Pipe	-	-	250
	2 Pipe	-	-	125

1 Pipe - Only exhaust out pipe is connected and the combustion air intake is from within the room. For example, one iN401 with a 4" diameter, the maximum exhaust pipe length for 1 pipe is 250 feet.

2 Pipes - Both the Combustion air intake and the exhaust pipe are connected. In this case, the table specifies the maximum length per pipe. For example, one iN401 with 4" diameter, 125 feet maximum is allowed for combustion air intake pipe and exhaust out pipe. The 125 feet maximum is per pipe.

Note:

1. Reduce the maximum equivalent length above by 5 feet per 90° elbow used and by 2 feet per 45° elbow used. Do not exceed the above set limits.
2. If multiple units are common vented, then the units must be cascaded. Please refer to the combustion section for how to do combustion with common vented units.
3. SAFETY INSTRUCTIONS: Do not connect any other appliance vents to the water heater inlet or outlet pipes.



iN401 Electrical Data

Electrical power required for the water heater is 120V AC, 60 Hz. The circuit breaker shall be sized for a power consumption of 15A (FLA). Larger breakers can be used for multiple units. Please ensure correct polarity of wiring before powering up unit.

iN401 Cascading Compatibility

Model	Compatible (Max # of Cascaded Units)
iN401	Yes (Max. 4 Units)
iN501	Yes (Max. 4 Units)
All Other Models: i200, i250, iQ251, iQ251D, iN401, iN501, iQ751, iQ1001, iQ1501, iQ2001, and iQ3001	Not Supported

